



San Diego Ship Modelers Guild

1492 N. Harbor Drive

San Diego, CA 92101

October 2018

NEWSLETTER

VOLUME 46, NO. X

OFFICERS

Guild Master

Ed Torrence
address redacted
phone redacted

First Mate

James Pitt
address redacted
phone redacted

Purser

Gary Seaton
address redacted
phone redacted

Newsletter Editor

Guy Lawrie
address redacted
phone redacted

Log Keeper

Tom Hairston
address redacted
phone redacted

SPECIAL ASSISTANTS

Web Master

Robert (Rob) Wood
address redacted

Presentations

Coordinator

Ed Torrence
address redacted

Established in 1972 by
Bob Wright and Russ
Merrill



Seen here standing to the left, John Wickman is presented the 2016 Cdr. John C. Mathews Award by Jon Sanford.

In memory of John Wickman

“As the bird trims her to the gale,
I trim myself to the storm of time,
I man the rudder, reef the sail, ...
The port, well worth the cruise, is near,
And every wave is charmed” - Ralph Waldo Emerson

MINUTES OF 11 SEPTEMBER 2018 GUILD MEETING

Guild Master Ed Torrence gaveled the meeting to order at the San Diego Maritime Museum on the Passenger Deck aboard the Steam Ferry *BERKELEY* with nineteen (19) members and three (3) guests in attendance. The Guild Master called for a minute of attention to honor the victims of the September 11, 2001 and the ongoing war on terror following recitation of *The Pledge of Allegiance* lead by **Tom Hairston**. Eight bells were then sounded by **Karl Zingheim** on a ship's bell in honor of **John Wickman's** service to the Guild and the ship modelers community.

The September meeting was primarily a celebration of the Guild anniversary postponed from August when power problems at the museum caused the August meeting to be cancelled. The meeting was adjourned and the business portion of the meeting with reports from Guild Officers was skipped so that members could enjoy a delicious spaghetti meal prepared by **Howard Griffus**.



continued next page

San Diego Ship Modelers' Guild is affiliated with and supports the Maritime Museum of San Diego



<http://sdshipmodelersguild.org/>



Enjoying his own cooking, **Chef Howard** is seen here next to his daughter and able helper enjoying the meal and an adult beverage (beverages for the meal were donated). **First Mate James Pitt** is looking on. Below, some of the members just having a good time!



Alex Roel & Jon Sanford



Gary Seaton & an empty plate



Don Dressel & Bill Grolz

Frank Dengler, Don Bienvenue, & Ed Torrence (hidden by the pole is Gary Seaton & his partner Diane)



A successful cake cutting ceremony requires a sword (contributed by Guild Master Ed Torrence USN(RET)), the newest Guild member Karl Zingheim and longest serving member Royce Privett, AND a successful cut with Don Bienvenue, Howard Griffus, and Ed Torrence officiating the ceremony!



**Next meeting is
9 October 2018**

5:15 Officer's Meeting

5:30 PM - Social

6:00 PM Meeting

Bring a Model!

October 2018

S	M	T	W	T	F	S
	1	2	3	4	5	6
7	8	9	10	11	12	13
14	15	16	17	18	19	20
21	22	23	24	25	26	27
28	29	30	31			

Community
Build Meeting,
1:00 PM aboard
the Berkeley
upper passenger
deck!

An Extra Feature: For those not familiar with the Guild's origins (and perhaps equipped with an effective magnifying reading glass), this article to the right was supplied by **Chuck Seiler**.

Though officer reports were skipped for the dinner, Purser Gary Seaton reported the guild balance as of 1 August was \$<redacted> and the guild balance as of 1 September was \$<redacted>.

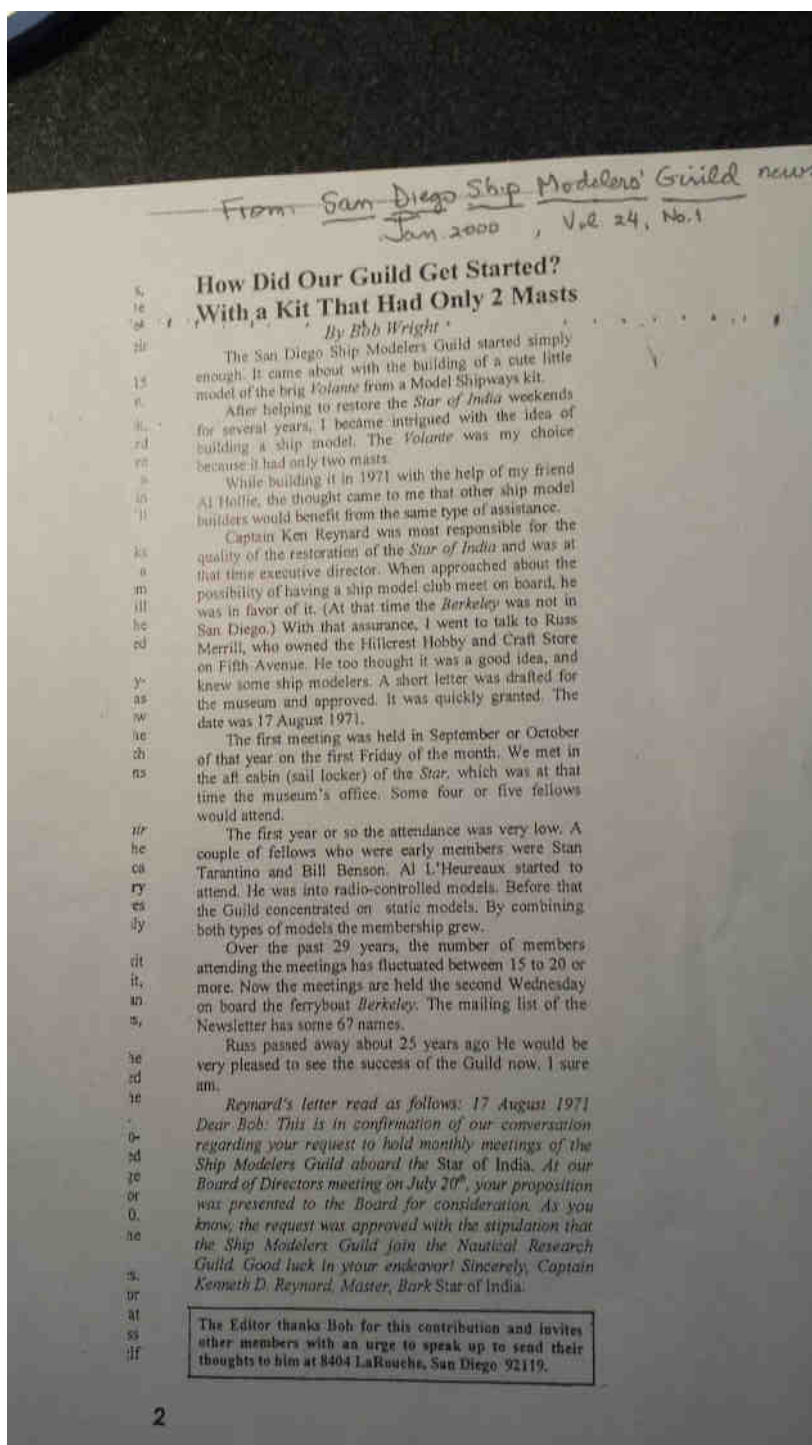
David Yotter provided the membership with an NRG update. The NRG informed NRG membership that the *Nautical Research Journal* expanded its coverage to include all aspects and levels of ship modeling and has incorporated *Ships in Scale* magazine. With the *Journal* now being released in both digital and print media, membership in the NRG is more attractive than ever for ship modelers of all skill levels. The editor is certainly enjoying his Autumn edition of the *Journal*!

A Reminder - It is still not too late to register for the NRG Conference, October 25-27 in Las Vegas, NV.

www.thenrg.org/nrg-2018-conference

A piece of new business: Frank Dengler has offered a revised "Show and Tell Information Form". This form and the older form can be found at the back of the Newsletter. **Frank** has designed this form in part reflecting his and many other modelers' interest in the history of the

ships brought to **Show and Tell**. Additionally, Frank suggested that the form could be electronically filled out and submitted to the Editor before or shortly after meetings while the meeting and models are fresh in people's minds. The editor notes that some members already are filling out the forms electronically and emailing them to him. That is a big help! A separate email from the newsletter will be sent to the membership with the forms in a Word format since many do not have an Adobe editor.



Show and Tell

The September meeting concluded with a display of the following **Show and Tell** models brought to the dinner by members

An Antiope Yacht

By Karl Zingheim

Bandai plastic kit, with upgrades and mounted on a custom diorama with adopted scale figures

Karl tells us that in honor of the Guild Birthday and keeping to the spirit of celebration, he brought this model of a Yamaha-29 (29 foot yacht) up to 21st Century standards. He added radar, satellite, and VHF and HF radio to the model and then constructed a diorama set in Bimini, Bahamas. Karl reported that one of the more challenging aspects of the scene was the modeling of the underwater feature as the figures dove into the water. Though the photo is not very clear, note the coral reef.



Following are two examples from our Community Build Groups, kits designed by Chuck Passaro, Syren Ship Model Company



Don Dressel's 18th Century Longboat, 1:48 scale, was built during the first community build and he said he would never have built the model were it not for Mike Lonnecker and the community build.



Jon Sanford's Royal Barge Circa 1700, 1/2 in = 1 foot scale, was begun with the second community build and just recently completed. He said this cherry wood model is well worth building and makes a beautiful display.

U.S. Brig *Syren* (1803)

by Royce Privett seen here with Don Bienvenuue, Gary Seaton and Diane listening in

Plank-on-bulkhead kit by Model Shipways

Scale - 1:64, 3/16 inch = 1 foot



Royce reports progress on his Chuck Passaro designed kit, USS *Syren*, a 240-ton brig that Royce reported its history on in

our June newsletter. Since that time, Royce reports adding the following items to his Basswood, beech, and walnut built model.

1. Upper and lower pairs of cheek pieces have been added to port and starboard sides
2. Port and Starboard upper head rails, catsheads, middle rails, and top rails with stanchions are complete.
3. The figurehead has been added.
4. Bumpkins have been added.



Jay MacMaster, Bob Kyle, and Tom Hairston also brought in models to show



Jay brought in his USS *Lexington* (1776) again displaying his wonderful work with various woods to color his model, no paint!



Bob brought in his model in progress of a 1949 19ft CHRIS-CRAFT runabout, 1/8 scale. This is a Dumas kit that can be adapted for RC operation though Bob said he had no plans to do so.



Tom brought in his display of the USS *Monitor* and the CSS *Virginia* (originally the USS *Merrimac* until her capture and conversion by the Confederates) bringing to mind one of the most famous naval battles in American history. Their battle on March 9, 1862 off Hampton Roads, Virginia ushered in a new era of steam-powered iron ships.

Frank Dengler has brought in several of his impressive collection of destroyers and this is model is from a previous unpublished **Show and Tell** offering. Here he is shown at the June meeting with his USS *Grayson* (DD 435). As a note, **Frank** tells us there won't be photos of ships before about 1830 so the use of paintings or prints as well as photos can be found on-line and navsource.org is a great source for U. S. Navy images.



USS *JOHN D. FORD* (DD 228)

by Frank Dengler

Based on a Revell USS *WARD* (DD 139) kit with Gold Medal Model photo etched and scratch built parts

Scale - 1:240

Shadow Box Display with historical references

Model of Destroyer USS *JOHN D. FORD* (DD 228) In shadow box with chart of Balikpapan, Badoeng Strait, and Java combat areas, envelope postmarked aboard JOHN D. FORD, service ribbons, poster depicting 4"/50 gun crew, ship's history, and photo



JOHN D. FORD was a CLEMSON (DD 186) Class destroyer, named for a distinguished Civil and Spanish-American War veteran, built by William Cramp & Sons, Philadelphia, PA commissioned 30 December 1920.

FORD began service with the Asiatic Fleet in 1921 operating from the Philippines, Japan, and China evacuating or protecting Americans from opponents in the Chinese Civil War of the 1920s, bandits in the '20s and '30s, and Japanese opposing Chiang Kai-Shek's government from 1928 until the early '40s. When the Japanese attacked Pearl Harbor, HI on 7 December 1941, JOHN D. FORD was moored at Cavite.

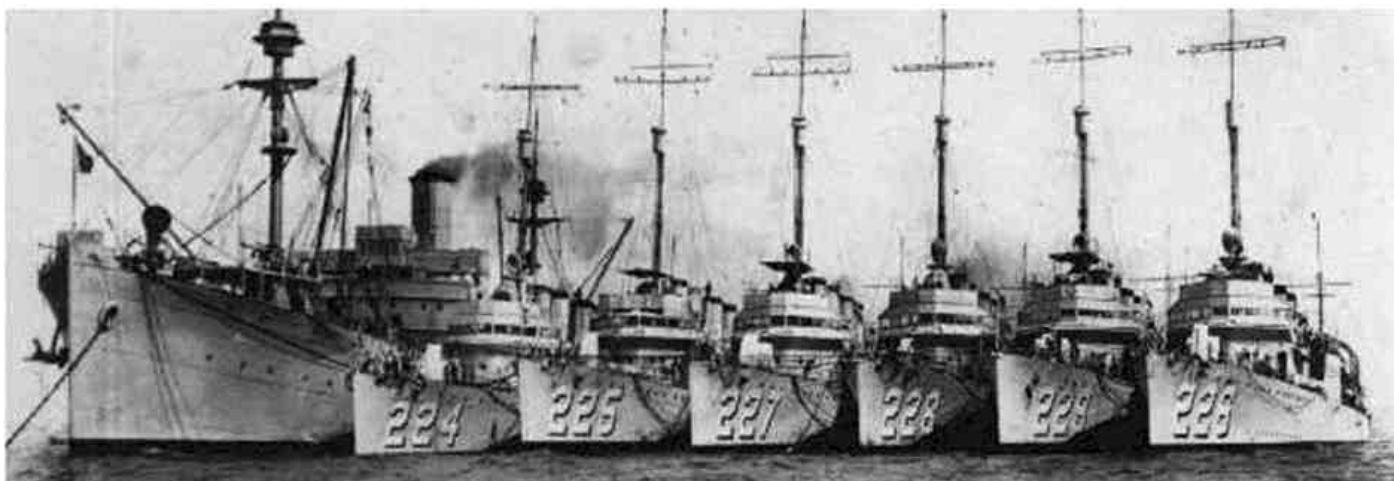
World War I vintage weapons put FORD at a significant disadvantage opposing Japanese air and surface units as they advanced through the Philippines and into Indonesia. Nevertheless, FORD got underway from Surabaya 11 January 1942 to lead similar destroyers PAUL JONES (DD 230), PARROTT (DD 218), POPE (DD 225) in a torpedo and gunfire attack on Japanese invasion shipping off Balikpapan 24 January 1942 sinking four enemy ships. On 18 February 1942 FORD got underway with other American and Dutch for Badoeng Strait where they fought Japanese destroyers during the night of 19-20 February. On 25 February FORD and other American, British, Dutch, and Australian (ABDA) ships got underway from Surabaya and engaged the Japanese in the Battle of Java Sea on the 27th during which 5 ships were sunk and the ABDA ceased to exist as a fighting force. JOHN D. FORD and 3 other three other destroyers steamed undetected through Bali Strait on the night of 1 March and arrived in Freemantle Australia on 4 March.

continued next page

USS *Grayson* by Frank Dengler telling her story: JOHN D. FORD shepherded convoys around Australia and from June 1942 to May 1943 escorted nine convoys between San Francisco and Pearl Harbor before transiting the Panama Canal to escort Atlantic convoys from New York and Charleston to Casablanca, French Morocco and Recife, Brazil. FORD joined a hunter-killer group built around the escort carrier USS GUADALCANAL (CVE 60) in January 1944 and supported the destruction of the German submarine U-554 west of the Azores that month. FORD returned to convoy escort duty from East Coast ports to the Mediterranean, the Canal Zone, Recife, Reykjavik, Iceland, and Casablanca.

From late May to the end of June 1945 FORD served as escort and plane guard for the carrier USS BOXER (CV-21) during shakedown in the Caribbean. FORD was converted to a general auxiliary (AG 119) in Boston and served in that capacity until decommissioned in Norfolk on 2 November 1945. The old destroyer was sold for scrap 5 October 1947 to Northern Metals Co and was dismantled where it was built in Philadelphia, PA.

1. JOHN D. FORD received a Presidential Unit Citation for "extraordinary heroism in action during the Java Campaign, 23 January - 2 March 1942 and four battle stars for World War II service.



JOHN D. FORD (DD 228) was the only one of the destroyers, including STEWART (DD 224), POPE (DD 225), PILLSBURY (DD 227), TRUXTUN (DD 229), and PEARY (DD 226) nested alongside USS BLACK HAWK (AD-9) pictured here in the 1930s off Chefoo (now Yantai), China, to serve in the U. S. Navy through World War II. STEWART was captured in dry-dock when demolition charges failed & served in the Imperial Japanese Navy. TRUXTON was wrecked on Newfoundland. The others were sunk in combat.

Photo from Navsource.org at <http://www.navsource.org/archives/05/pix1/0522406.jpg>



SAN DIEGO SHIP MODELERS GUILD

Show and Tell Information Form

(Use back if required)

Ship's Name:

Model Builder:

1. Ship's History

- a. Type/Class:
- b. Namesake:
- c. Shipbuilder & Location:
- d. Date Commissioned/In-Service:
- e. Operations (less than ≈500 words)
- f. Fate: _____
- g. Awards / Accomplishments:

Ship Photo

Caption i.e. ship's name, photo date, configuration,
appearance/camouflage, & circumstances

2. Model Fabrication

- a. Materials:
- b. Scale:
- c. Era & Configuration Depicted:
- d. Model Construction Period:
- e. Techniques:
- f. Issues & Solutions:

Model Photo

Caption i.e. model's name, photo date, configuration,
appearance/camouflage, & circumstances



SAN DIEGO SHIP MODELERS GUILD

Show and Tell Information Form

(Use back if required)

Name of Modeler: _____ Name of Model: _____

Scale: _____ Kit or Scratch (Name of kit company): _____

Background on actual ship; e.g. What made it an object of interest to build?, Did the ship have an interesting purpose or mission?, Perhaps a story behind its naming or christening?, Were there newsworthy events, persons, or accomplishments during its service?, Are there historical insights about the ship?

Information/Details about the model; How long have you been building the model?, What challenges has it presented?, How far along is the model?, Details of the build?, What skills, techniques, or special tools might a modeler want to have to undertake this build?