



DECEMBER 2025

32°43'N



117°10'W

VOL LIII, No 12

## GUILD OFFICERS

[Steve Miller](#)

Guild Master

[Steve Scheet](#)

First Mate

[John Walsh](#)

Purser

[Karl Zingheim](#)

Log Keeper

[Alex Roel](#)

Newsletter Editor

## COMMITTEE CHAIRS

[John Walsh](#)

Web Master

[Chris Sullivan](#)

Photographer

[John Walsh](#)

Presentations

[Jon Sanford](#)

Model Shop

[Isaac Wills](#)

Youth Coordinator

[Steve Scheet](#)

Fair Coordinator

[Karl Zingheim](#)

Expo Coordinator

[John Walsh](#)

Community Build

# Season's Greetings



**Blah blah blah, blah blah!**

**Blah.**

**Blah Humbug!**



No pontificating this month, just a simple and warm "Season's Greetings" to each and every Member and their loved ones.

*Alex*



MMSD Supported

San Diego Ship Modelers Guild  
1492 North Harbor Drive, San Diego CA, USA 92101  
[sdshipmodelersguild.org](http://sdshipmodelersguild.org)

founded 1971 by Bob Wright and Russ Merrill



NRG Chapter Club

## 🚢 From the Quarterdeck *by Guild Master Steve Miller*

The leaves are gently falling today, but more importantly there's a distinct crispness to the morning air. Cooler weather. That is something to be thankful for!

We just met on Veterans Day and wow, what a meeting that was! I will remember Isaac's presentation fondly for a long time – the photos of "spars as far as the eye could see" were awe-inspiring. You read about it in the history books, but to actually see it – wow! I am truly thankful Isaac took us along on his grand adventure! Thanks Isaac!

So as I was saying we just met on Veterans Day and before you know it, our Christmas Potluck (and Christmas itself!) will be here. ([Be sure to RSVP.](#))

But let's shorten our sails a bit, as we're not in a rush. Thanksgiving is coming first – a day to slow down, to enjoy family and friends, or to just contemplate all the blessings in our lives and to be thankful.



### ***In This Issue***

- ☑ [Season's Greetings](#)
- 🚢 [From the Quarterdeck](#)
- 🎰 [Raffle!](#)
- 🚢 [A Sea Shanty](#)
- 🔔 [Last Meeting](#)
- 🔔 [Show and Tell](#)
- 🚢 [Flotsam and Jetsam](#)
- 🚢 [Roll Call](#)
- 🥚 [Easter Egg Reveal #3](#)
- 🐺 [LUPA – The She Wolf](#)
- 🚢 [Cool Tool](#)
- 🚢 [Home Port](#)
- 🚢 [The Bitter End](#)

Besides the cooler weather and Isaac's photos, I am thankful for a great many things. My family is paramount. Then there's three squares a day and a place to call home. These are not guarantees. We are all blessed in many ways.

But on a more relevant tack, I am truly thankful for our craft and our Guild. As model shipbuilding goes, I am most thankful for the friendships and camaraderie found amongst the Guild members. I am thankful for all of your knowledge and skills, and moreover your willingness to share and help one another. The sharing of experience and experiences is one of the greatest gifts we



can give each other. But I am also thankful for the calm that the art itself brings to my life.

So whether it's turkey with all the trimmings, or toast, jellybeans and popcorn I hope you all have a great Thanksgiving!

Of course after Thanksgiving comes that darkest of days – Black Friday. I don't know about you, but you'll find me in the shipyard on that crazy day. That's my recommendation to you all. But to each their own!

Count your many blessings friends, and give thanks.

See you all next month!

STEVE



*Fabrication of variously colored scale ballast stones from uncooked couscous for the "Something-Nautical-in-a-Bottle" contest*






The Guild's donation program of local model shipwright Curt Madsen's kit stash will continue at the next meeting. The raffle will feature His Majesty's SWAN Class sloop FLY by [Victory Models](#) (3/16" or 1:64 scale.) A double-planked hull, laser-cut material, metal fittings and beautiful photo-etched brass, the FLY builds up to an overall length of approximately 32".





The FLY will be raffled off to any Member or guest in attendance at the December meeting's "no charge" raffle.

The rules for taking a raffle ticket are:

-  You intend to build the model *and* it is generally within your ability
-  You are present for the drawing at the end of the meeting
-  One entry per person

Raffle results to date:

- |   |          |                    |             |
|---|----------|--------------------|-------------|
|  | November | PRIDE OF BALTIMORE | Kirk Rummel |
|  | October  | GRANADO            | Don Dressel |

Another beautiful kit of a beautiful ship, who will take her home next month? Come out and see, my friends.



# Roll, Boys, Roll!

Listen to it on  
 YouTube

Oh Sally Brown, she's the gal for me boys  
Roll, boys! roll boys roll!  
Sally Brown she's the gal for me, boys  
Way high, Miss Sally Brown!

Down to Trinidad to see Sally Brown boys  
Roll, boys! roll boys roll!  
Down to Trinidad to see Sally Brown boys  
Way high, Miss Sally Brown!

She's lovely on the foreyard, she's lovely down below boys  
Roll, boys! roll boys roll!  
She's lovely 'cause she loves me, that's all I want to know boys  
Way high, Miss Sally Brown!

Ol' Captain Baker, how do you store yer cargo?  
Roll Boys! roll boys roll!  
Some I stow for'ard, boys, an' some I stow a'ter  
Way high, Miss Sally Brown

Forty fathoms or more below boys  
Roll, boys! roll boys roll!  
There's forty fathoms or more below boys  
Way high, Miss Sally Brown!

Oh, way high up, an' up she rises  
Roll Boys! roll boys roll!  
Way high up, and the blocks is different sizes  
Way high, Miss Sally Brown!

One more pull, don't ya hear the mate a-bawlin'  
Roll, boys! roll boys roll!  
One more pull, that's the end of all the haulin'  
Way high, Miss Sally Brown!

CHORUS





## Last Meeting



The November Guild meeting was attended by 26 Members<sup>1</sup> and 2 guests<sup>2</sup>; all Officers were present. 1 new Member<sup>3</sup> joined the Guild.



Powder Monkey **Karl Zingheim** rang the bell at exactly 6:00pm to signal the second dog watch and the start of the meeting.



The meeting was opened by Guild Master **Steve Miller** who welcomed guests **Paul Santy** and **Kirk Rummel** (who would later sign up as our newest Member) and frequent guest **Patrick Williams** (Niko's father.)



Steve updated the Members on the status of the Museum Model Shop, noting that the MMSD will not be able to provide parking assistance to Members while working in the shop. The Model Shop continues to be refreshed and cleaned by **Mike Hite** and **Paco Arenosa**, among others. Mike reported that he has been giving Mini-STAR kits to youngsters visiting the Model Shop but was concerned about depleting the supply. **Tom Hairston** chimed in that Mike need not be concerned as he would fabricate as many



Mini-STARs as required. Mike also noted that he had found some small compasses that might be suitable as give-aways to supplement the Mini-STARs.



Following a routine round of Officer's reports, Steve asked if any Members wished to invoke Parley; hearing none he then opened [Show and Tell](#) which was then followed by the break.

Upon resumption a free raffle for the PRIDE OF BALTIMORE was held and brand-new Member **Kirk Rummel** was found to be holding the lucky ticket.



<sup>1</sup> Arroyo, Clausson, Dressel, Florio, Hairston, Hite, Jones, N. Li-Karins, S. Li-Karins, Lonnecker, López de Arenosa, MacMaster, McKinley, Miller, Nagatani, Pizzuto, Roel, Sanford, Scheet, Seiler, Walsh, Warner, Wessel, Wills, Yotter, Zingheim

<sup>2</sup> Paul Santy, Patrick Williams

<sup>3</sup> Kirk Rummel



**Mike Hite** announced that he had recently purchased a book on planking that he had been searching for ([\*An Introduction to Model Ship Building “Dockyard Style”\*](#) by Adrian Sorolla) and upon opening his delivery order surprisingly found two copies; he generously donated one copy to the Guild.

The Guild Master then invited the Members to the BERKELEY's fore to enjoy **Isaac Will's** slideshow presentation of his recent trip in August to the Netherlands and Sweden as part of MMSD's sailing crew.

Isaac's presentation highlighted the crew's attendance at Amsterdam's recent Tall Ship Festival (SAIL Amsterdam) and Het Scheepvaartmuseum (National Maritime Museum) as well as crewing the EYE OF THE WIND from Amsterdam to Stockholm via the North Sea and Baltic Sea.



At the conclusion of this inspiring presentation the Powder Monkey rang the ship's bell at 8:18pm, bringing our November meeting to a close.





Shrouds are going up and deadeye lanyards are being strung by **Steve Miller** on the PRINCE.

- *PRINCE DE NEUFCHATEL* by Steve Miller
- Constructo kit, plank-on-bulkhead, wood
- 13/64"≈1' 1:58, under construction



**Mike Lonnecker's** latest ship's boat is a French longboat (Admiralty-style of course.)

- *FRENCH LONGBOAT* by Mike Lonnecker
- CAF Model kit, cherry, Swiss pear
- 1/4"≈1' 1:48, under construction

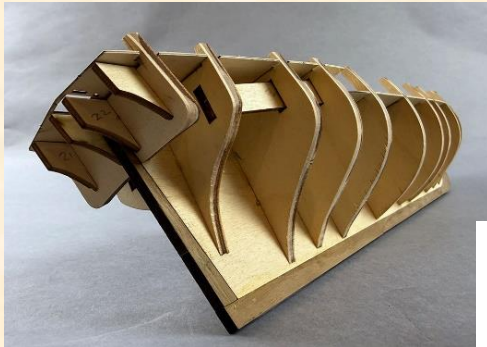






Raffle winner **Don Dressel** brought in GRANADO at an early-build stage with keel, bulkheads and false deck installed. A somewhat spirited mini-Parley ensued after **Jay MacMaster** raised the question of fitting planking to the rabbet. Don, **Mike Lonnecker** and the **Newsletter Editor** each chimed in on the advisability of utilizing the

rabbet to anchor planking along the keel and the stem and the sternpost.



- *GRANADO by Don Dressel*
- *Victory Models kit, wood*
- *3/16"=1' 1:64, under construction*



**Mike Florio** shared an HO-gauge waterline model from his extensive home collection.

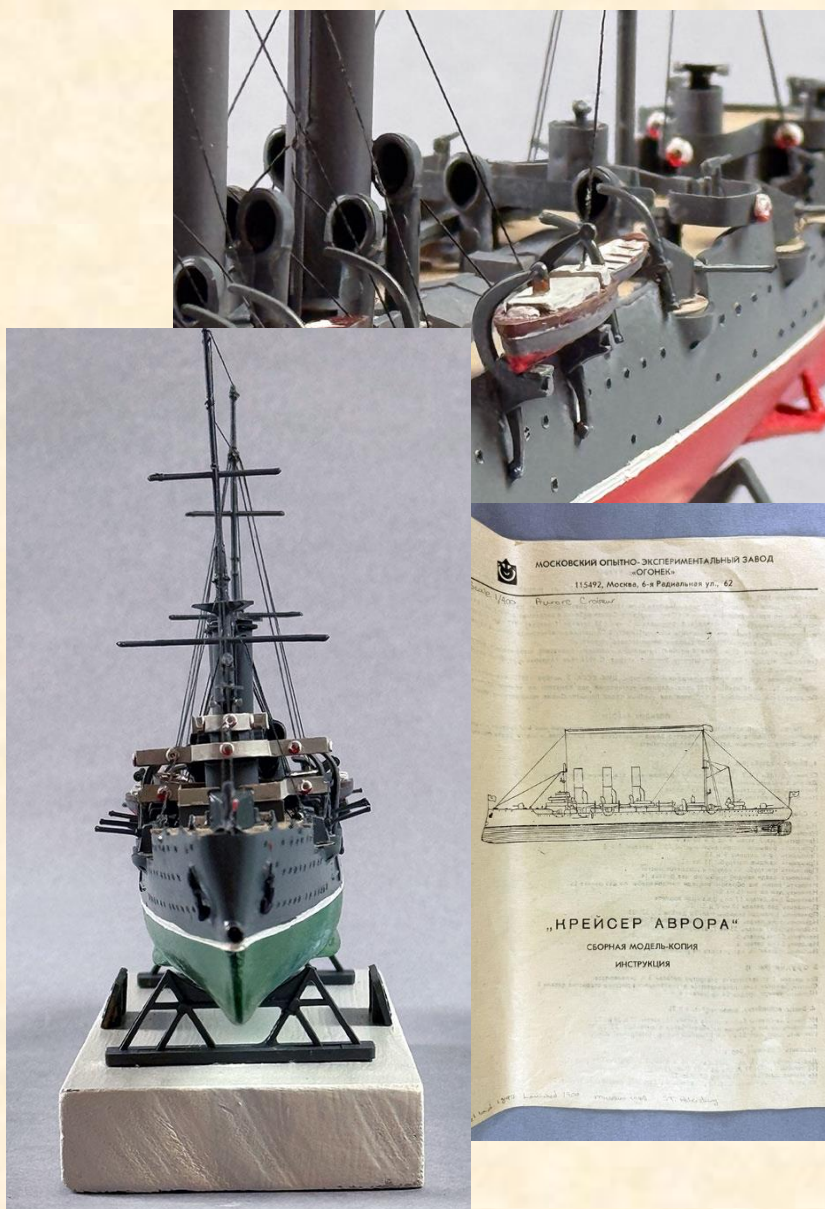


- *ISLANDER TRANSPORTER by Mike Florio*
- *Sea Port Model Works kit, wood, resin, brass, cardboard*
- *9/64"=1' 1:87, completed*



**Phil Pizzuto** unknowingly began an adventure in model building several meetings ago when he availed himself of a couple of free give-away model kits. He knows what he likes: it turned out that they were identical kits of the Russian cruiser **AURORA**, only packaged differently by Russian and French manufacturers. Phil began work on the first but found the instructions printed in Russian Cyrillic and so turned to the other kit... only to discover the instructions in French. Undeterred, Phil decided to build the matched pair and forged ahead.

- **AURORA (2 versions) by Phil Pizzuto**
- **Heller kits, plastic**
- **1/32"≈1' 1:400, completed**





## Flotsam and Jetsam

*"A man is never lost at sea"*

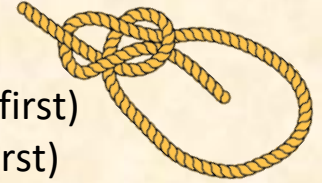
*Ernest Hemingway, author*

### **Soundings** – pronouncing nautical terms

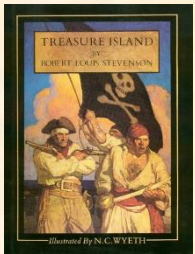
A **BOWLINE** is one of the most useful and essential knots to master aboard a vessel; be sure *you* master how to pronounce it.

Reads like: **boe•line** (one word, two syllables, accent on first)

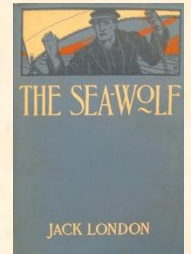
Pronounced: **boe•lin** (one word, two syllables, accent on first)



### **Navigating the Website** – [sdshipmodelersguild.org](http://sdshipmodelersguild.org)



Even model shipcrafters need to take the occasional break. The website's **FIDDLER'S GREEN** page is packed with nautical literary diversions both fiction and non-fiction. Set sail on the PEQUOD, CAINE, or SURPRISE and put the rigging aside for a few more hours.



### **Around the Scuttlebutt** – latest Guild news




The Community Build meets during the regular Guild Meeting's social hour and set-up time, so stop by and see how the Masting and Rigging project is faring.



Purser **John Walsh** reports that 16 Guild Members are also members of the [Nautical Research Guild](#).



We received the following (somewhat) anonymous missive in response to last month's call for Members to step up in leadership positions...

 I nominate myself for any or all of the following positions:

- Newsletter Contributor, emeritus
- Mayor, kiddies table
- Back Row smart-aleck / kibitzer
- Elder Statesman
- Social Coordinator, SDSMG Santee Branch
- Curmudgeon at Large



**Jay MacMaster** reported that [Syren Ship Model Company](#) has resumed online orders which it had temporarily suspended.





Model shipwright and Lakeside resident **Neil Joseph** generously donated two schooner kits to the Guild this past month: the 1860 FLYING FISH and the 1877 SMUGGLER. Thank you, Neil!



**Mike Lonnecker** was contacted by the NRG's **Kurt van Dahm** about a Michigan modeler travelling to San Diego and hoping to connect with local model shipcrafters while visiting. Mike got the relevant details and he and **Chuck Seiler** and your **Newsletter Editor** were on the Embarcadero last week to welcome **Sally Nye** to San Diego. Sally belongs to several modeling organizations in the Great Lakes area and is currently working on the PHILADELPHIA, which prompted Chuck to bring his PHILADELPHIA along. Sally was escorted through the Museum, including the BERKELEY and the Museum Model Shop, the SAN SALVADOR, the CALIFORNIAN, the SURPRISE, and the STAR OF INDIA. The group wrapped up the day with a luncheon hosted by Mike.



photos by Alex Roel



*Sally visits with Chuck, Mike, and Model Shop Chair Jon Sanford*

Sally sent a very nice thank-you, which read in part “So because of my wonderful time with you folks and these introductions, I was able to make further friends at the Maritime [Museum]. Furthermore, I read [*Mains’L Haul*] magazine from cover to cover during my 4-hour flight to O’Hare. And I see that the Gunboat PHILADELPHIA 1776 was one of Dr. Brown’s favorite models. After seeing Chuck’s fantastic build, I feel like starting over.”



The Guild’s Holiday meeting is December 9<sup>th</sup> aboard the BERKELEY and will be a festive pot luck dinner; spouses and friends are welcome ([RSVP](#) as soon as possible in order to aid planning efforts.) The dinner will feature a presentation of the history of ships-in-a-bottle by **Bob Jones** and...



... the “Something-Nautical-in-a-Bottle” contest is now upon us! Modelers, please deliver your creations to the Show and Tell table. The entries will remain on display for inspection / appreciation / valuation throughout the night. Judging will be by attendees (one vote per person) to determine the 1<sup>st</sup>, 2<sup>nd</sup>, and 3<sup>rd</sup> place finishers. Awards to be announced at presentation.

## On The Horizon



DEC 2	6pm	Officers Meeting	online
DEC 9	5pm	Community Build Meeting	BERKELEY
DEC 9	6pm	<b>Guild Meeting</b>  <b>Holiday</b>	BERKELEY w/dinner
DEC 16	—	<i>The Second Dog Watch</i>	website, email
<b>2026</b>			
JAN 6	6pm	Officers Meeting	online
JAN 13	5pm	Community Build Meeting	BERKELEY
JAN 13	6pm	<b>Guild Meeting</b>	BERKELEY
JAN 20	—	<i>The Second Dog Watch</i>	website, email
FEB 3	6pm	Officers Meeting	online
FEB 10	5pm	Community Build Meeting	BERKELEY
FEB 10	6pm	<b>Guild Meeting</b>	BERKELEY
FEB 17	—	<i>The Second Dog Watch</i>	website, email
MAR 3	6pm	Officers Meeting	online
MAR 10	5pm	Community Build Meeting	BERKELEY
MAR 10	6pm	<b>Guild Meeting</b>  <b>Election</b>	BERKELEY
MAR 17	—	<i>The Second Dog Watch</i>	website, email





### **1) Tell us a bit about your life/career path.**

I was born in Philadelphia and grew up in the 'burbs of Philly. Go Eagles!!! In 1972 I went to Jacksonville University in Florida on an NROTC scholarship and in April 1976 I was commissioned into the United States Navy. My first tour of duty was aboard USS DU PONT<sup>1</sup> out of Norfolk, whence I plied the oceans and seas of the world. In 1980 I transferred to San Diego where I served as a staff composite operations planner, making two WestPac cruises (plying the oceans and seas once again.) In 1983 I went ashore as an instructor at a Navy training command in Point Loma.



I left the Navy in November 1986 and was immediately employed by my previous command as a security manager / security officer. I remained in that position for 33.5 years. I was married in 1983 and

divorced in 1989, no kids. I currently live in Santee. *Do more / Due East.*

### **2) How did you come to call San Diego home?**

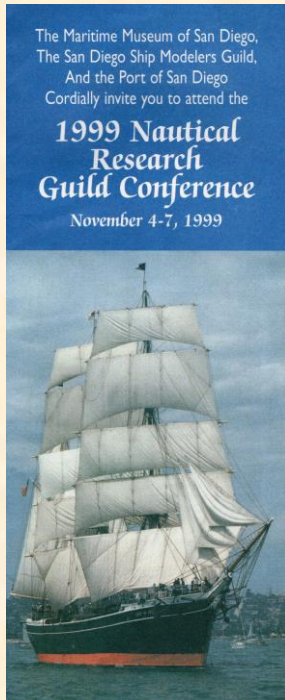
I came to San Diego in 1980 while in the Navy. With the exception of some time spent in the western Pacific, I have lived in San Diego and its environs ever since.

### **3) How did you come to the Guild?**

One day in the mid-1990s I wandered into Discount Hobby (then on Convoy Court, now on Clairemont Mesa Boulevard.) I came across a jolly gnome of a chap selling wooden ship models. KC Edwards rented a small corner of the store and had his own model ship store.

<sup>1</sup> Chuck recounts: "As an aside, I was aboard the 'SAMMY DU' when this photo was taken. I might have even been on the bridge. We had a photo op but when the helo came by to take our pic the gunners had the barrel pointed down so they could clean. We had to correct the barrel and have the helo come back around."

I spent much time with KC and his cat, listening to his stories and talking about ship models. He prodded me to join the Guild, but as a reclusive slug I held back. Eventually I joined... the rest is history. Many of the old-timers have a similar story. KC was a Guild Member and Officer for many years. When he passed away in 2006, recommended attire for his funeral was “Hawaiian shirts.”



I am not entirely sure when I joined the Guild, but the first mention of me in the Newsletter was February 1997. The entry appears to be “introduce yourself, new guy, and tell us what you are building.”

My first participation in Guild events was in November 1999 when the Guild and the Maritime Museum of San Diego co-hosted the 1999 Nautical Research Guild Conference. I assisted Robert Hewitt with the model display (124 models) in the Cruise Ship Terminal. It was a hoot... particularly when the Carnival cruise ship JUBILEE unexpectedly showed up that Saturday morning. Oooops. We forgot to tell you. That is also when I first met Don Dressel.

Twenty-eight years later I am still here roiling the water.



#### **4) Do you recall your first model?**

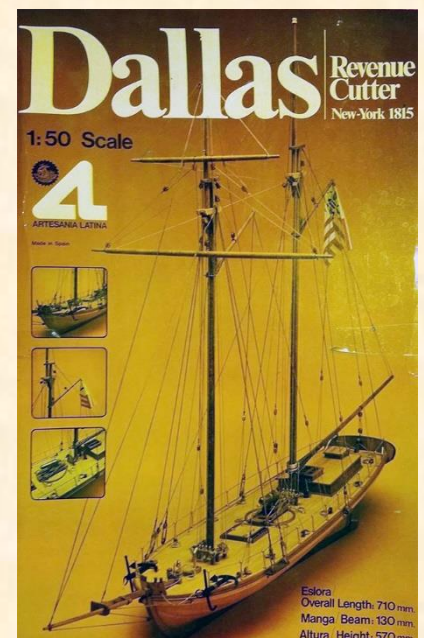
Not really. As a kid, I built plastic cars, planes, and ships; I don’t recall which ones. My first wooden ship model, however, was Artisanía Latina’s revenue cutter DALLAS in the mid-1990s.

#### **5) Of the models you’ve made, which is your favorite?**

None, really. The models I have started and lost interest in... *meh*. The models I have completed and are on the shelf... *meh*. I guess the model I am interested in the most is the one I am working on now, followed closely by the one I am planning to do next. I know “interest” and “favorite” are not the same: I’m being pedantic.

*Oh wait!!!!*

Now that I’ve thought about it, my favorite model is actually a model project: [The Trafalgar Project](#). Back in the day the Guild was occasionally petitioned to build things for the Museum. In March 2005 Bob Crawford (Museum sponsor and Guild Member) approached the Guild about making a diorama of the Battle of Trafalgar





(21 October 1805) to open aboard the newly acquired HMS SURPRISE on the 200th anniversary of the battle. I had fantasized about doing this as a kid, but didn't realize all it entailed. Multiple Guild members formed three teams (French, Spanish and British) and assembled and mounted about 60 ships-of-the-line involved in the battle, as well as 2 frigates and a schooner. We used 1:1200 scale ALNAVCO Napoleonic kits. All ships had their correct national ensigns and HMS VICTORY flew its famous signal<sup>2</sup>: it was a huge success. Someday I may tell you about it.



*Trafalgar Project under construction*



*HMS VICTORY cuts the line, as seen from HMS AFRICA*



*Trafalgar Project completed (displayed on STAR OF INDIA)*

## **6) Describe another avocation you enjoy.**

Drinking beer, harassing Alex.

## **7) Do you have any tips or advice for other modelers?**

- You can never have too many clamps
- Your model doesn't have to *BE* perfect, it just has to *LOOK* perfect (a well-placed rope coil or barrel can do wonders in hiding glitches)

<sup>2</sup> England expects that every man will do his duty





## Easter Egg Reveal #3 by the Newsletter Editor

We're back with another Easter Egg reveal. This one might have flown under the radar as a simple decorative change...

Reveal #3: In the December 2024 issue of **TSDW** the front page made a big to-do about the holiday season. But right there in the precise middle of the masthead is a graphic nod to the Winter season itself, replacing our standard compass rose:



Too subtle? Not fair?

Send a letter to the Editor.



Wait... isn't *this* a December issue as well?



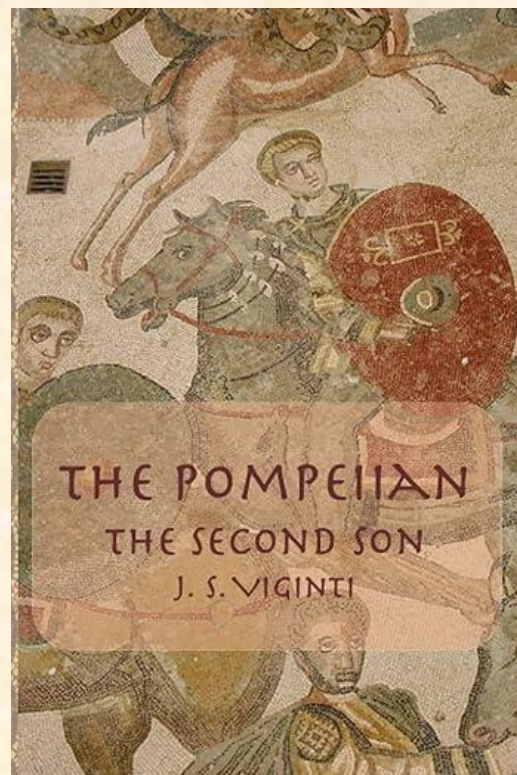


### Introduction

In the spring of 2024 I began to search for a wooden model project suitable to work on in the San Diego Ship Modelers Guild booth at the upcoming San Diego County Fair.

My second novel *The Pompeiiian: The Second Son*<sup>1</sup> traces a fictional Roman veterinarian's travels from Rome to London (Londinium) by military troop ship. The research I did for that novel prompted me to learn more about the Roman navy, and then it occurred to me: what better way to learn about such a ship than to build a model of it?

- LUPA by Chari Wessel
- Mantua kit, wood
- 3/8"≈1' 1:30, completed



### The Kit

Inspired by my plan, I found a discontinued Mantua kit (Figure 1) of a Roman Republic bireme on eBay for \$200 and began framing and planking her during that 2024 San Diego County Fair.



Figure 1 — the Mantua kit

<sup>1</sup> Chari is the author of three novels detailing the adventures of a young veterinarian living in the 1st century Roman Empire; she writes under the pen name JS Viginti.



I have built other Italian-manufactured kits, so I was not surprised to find the enclosed instructions useless and the plans poor. The given scale (1:30) was laughable. Apparently, the bow and stern sections in the original kit had been cast in plastic; the kit I had contained two blocks of balsa wood that I had to shape myself. The provided railings appeared to be 18<sup>th</sup> century spindle-style rails. The dowels provided for the oars were huge compared to the scale of the ship. Finally, I wished to update this 30 BCE bireme kit to 1<sup>st</sup> century standards. In order to make a more authentic and attractive model, I would obviously be doing some creative kit-bashing.

### ***History – the galley types***

Galleys with both sails and oars evolved in the Mediterranean very early on, with a single bank of oars (*pentaconters*) and double-banked oars (*biremes*) noted as early as the 8<sup>th</sup> century BCE. By 500 BCE, the Greeks and Persians were fighting their naval battles in *triremes*. "Remus" is Latin for "oar;" a "remex" is a "rower." A trireme was a long, low ship with three tiers of oarsmen on each side, stacked inside an "outrigger" projecting from the hull. These larger galleys also carried two masts and sails. A full trireme crew was around 200 men: 170 rowers, plus a deck crew of 10, headed by a trierarch (captain) and a detachment of marines. Battle tactics included boarding for hand-to-hand combat or ramming enemy ships to sink them (the modern replica trireme OLYMPIAS has reached speeds up to 9 knots, rowed by an untrained modern crew.) The Greek Athenian navy was a volunteer service of citizens and hired foreigners.

### ***History – the Roman navy***

The Roman navy was a branch of the Roman army. Senior army officers served as captains and admirals (for example, Pliny the Elder was a cavalry general who later commanded the Mediterranean Fleet.) Contrary to Hollywood's depictions Roman ships were not manned by slaves but by volunteer troops who received pay and retirement benefits like other legionaries and auxiliaries.

In the early Republic, the Roman navy was embryonic, mainly a shore patrol and pirate defense force, manning Greek ships built in the various Greek-founded Italian port cities. The largest vessels were their triremes. Rome's first large-scale naval conflict was the first Punic war with Carthage in 260 BCE. Phoenician Carthage was a major sea power, and their *quinneremes* were far superior to the Roman ships. The Romans captured a wrecked quinnereme, and within sixty days had built 120 of their own. Although this newly-bolstered fleet was defeated, the Roman navy continued to grow and innovate by incorporating

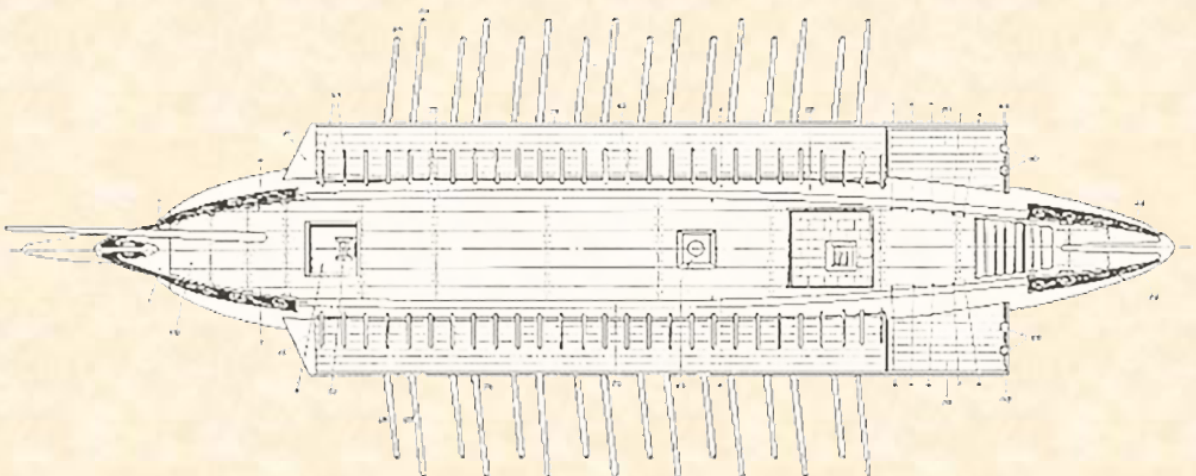


improvements from the cultures they conquered. Within a century Rome defeated Carthage and took its territories in North Africa, Sicily and Spain.

As Rome expanded from Italy the need for a strong navy increased. Eventually, the Roman navy patrolled the Mediterranean (which 1<sup>st</sup> century Romans called "Mare Nostrum," or "Our Sea") as well as the Aegean, the Adriatic, the Black Sea, the English Channel, and the North Sea. They maintained river patrol fleets on the Thames, the Rhine, and the Danube rivers, using biremes and single-banked craft called *liburnians*, copied from the conquered pirates of Dalmatia. They even explored the Atlantic from the west coast of Africa to western Ireland. The tactic of ramming gradually disappeared as Roman ships became armed with various types of artillery (scorpions, ballista, and catapults) and carried cohorts of the disciplined, well-equipped Roman infantry.

The Roman navy's motto ***Velis remisque*** ("with both sails and oars") eventually came to mean "giving maximum effort."

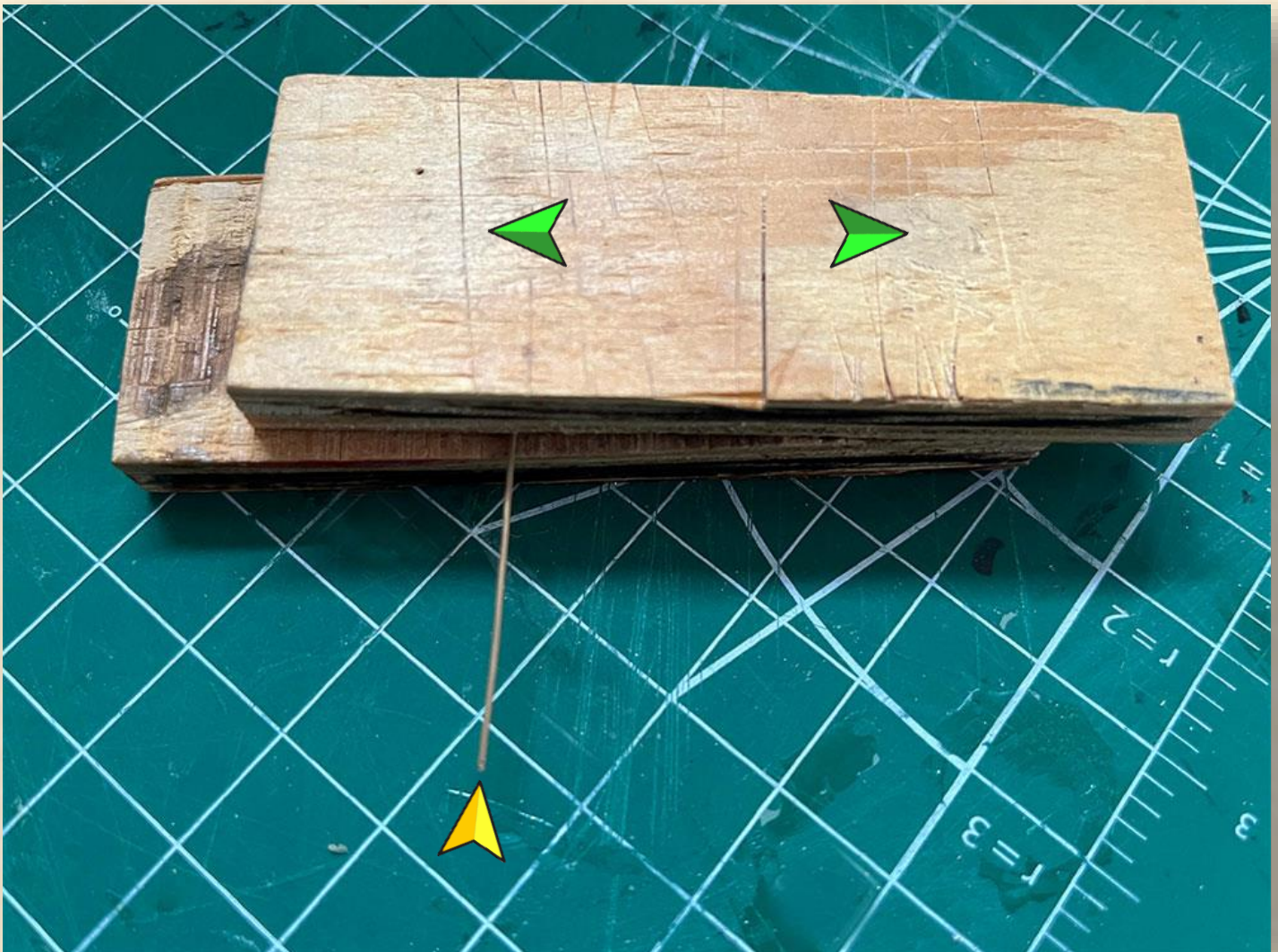
***Next time:*** I will discuss starting construction of the bireme LUPA including keel, frames, and decks.



### **Wire straightener**

Working with wire can be tricky once a length of source material has become curved, bent, or kinked. This is easily resolved with two simple blocks of scrap wood and some manual dexterity.

First, remove notable kinks and bends from the wire by hand. Next, place the wire between the two blocks at a 90° angle to the direction of force to be applied. Finally, at first slowly and then more and more rapidly, slide the top block back and forth over the wire, which will force it to straighten out completely.







*San Diego Bay, November 12 2023, 12:05pm*

Thanks to our sponsor, the Maritime Museum of San Diego, the San Diego Ship Modelers Guild is fortunate to call not only San Diego Bay our home, but also the steam ferry BERKELEY, part of the Museum's fleet tied up on San Diego's Embarcadero.







## ***Our Founders***

The Guild was founded in 1971 by Bob Wright and Russ Merrill in collaboration with Ken Reynard, Captain of the barque STAR OF INDIA.

## ***Mission Statement***



The [San Diego Ship Modelers Guild](#) is dedicated to the preservation and enhancement of the craft of building scale ship models and to providing a forum for the exchange of ideas, information, skills, and techniques.

## ***Maritime Museum of San Diego***



The Guild encourages all Members to join and maintain an annual membership in the [Maritime Museum of San Diego](#). As our sponsor, the MMSD provides the Guild space aboard the steam ferry BERKELEY to hold monthly meetings; allows us to work in, store supplies, and maintain the Museum Model Shop; and annually awards Guild entrants ribbons and cash prizes for the Design In Wood competition at the San Diego County Fair.

## ***Nautical Research Guild***



The Guild also encourages all Members to join and maintain an annual membership in the [Nautical Research Guild](#). As a chartered Chapter Club, the NRG accords certain benefits, privileges, and protections to our Guild.

## ***Piracy in Model Shipcrafting***

Although there is no single, agreed-upon definition of what constitutes "piracy", the use of another's intellectual or physical property without recompense is the basis for any working definition. Unfortunately, this is an issue that affects our craft: be scrupulous and avoid purchasing pirated kits or materials.



## ***Back Issues***

Back issues of *The Second Dog Watch* are accessible via the [Newsletter Archive](#) which has digital copies dating back to Volume I, Issue 1 (May 1977.)