



San Diego Ship Modelers' Guild

Volume 5 Number 7

July 12, 1981

Notes from the June Meeting

It could not have been a more beautiful evening for a party aboard the Star of India for our anniversary party. The food, drink, and people present were all very enjoyable and I am sure that a good time was had by all. I am pleased to announce that the bar kitty was fed well enough to begin a very small account for parties. We were able to repay John Woodard who up-fronted and purchased the liquor. We have a little booze left for our next party and through the kitty we will one day have a self-sustaining bar for all future parties. Thanks to all who made this a most enjoyable evening.

Notes on the July Meeting

The July meeting will be preceded by John Woodard's Steam Topics at 7:30. After some short business topics, i.e., The uncompleted Robert E. Lee model, Doug McFarland and Bob Pranka have volunteered to present rope walking and rigging as a featured topic. Bring those formidable rigging problems for some expert advice.

Regattas

The Guild's annual regatta is fast approaching with just over 2 months to prepare. If you would like to help out in monitoring, registrations, or sales there will be sign-ups at the next meeting. The Guild has received a lot of press coverage on these events and our biggest benefit has been many new members for both the R/C and scale aspects of our hobbies, so please help if you can.

Coming up this next month is the first annual (we hope) regatta being put on by the Shipmodelers Association of Fullerton. There are plans afoot for the San Diego group to show up en masse so if you are planning to go and have a ride to share or need a ride we will be discussing it at the next meeting. Please see the enclosed flyer received for participants.

Notes on the Pond

The Straight steering bouyes will be set up this weekend at the Model yacht basin for those wishing to practice maneuvering and straight steering. Also, the new dock will be set up. We are trying to recover the cost of the materials that went into building it so bring a little change for the Kitty, Thanks. The pond will be closed on the following dates:

July 25 August 8, 15 September 5, 12, 19, 26-27 October 24 December 5

Members to the Big Time

Check out the July Issue of Scale Ship Modeler for an article by Doug Smay on calculating scale speeds, and another article mentioning John Woodard. The Sept. Issue of SSM will have a feature article on John's operation.

JULY MODELER OF THE MONTH

BOB CRAWFORD

by Bill Kelly-Fleming

It wasn't that many years ago that a young man, just out of the Navy and into a junior college, paid a visit to the late Russ Merrill at Hillcrest Hobbies. He purchased a kit of the DAPPER TOM, which he built and displayed at his parents home. Today he has completed about thirty models, his garage looks like a shipyard with seven ships in various stages of construction, and he is one of our most active members of the Guild.

Our treasurer and newsletter editor, Bob Crawford is this month's Modeler of the month.

An interest in ships has come from Bob being a Navy junior and his serving in the Navy. He prefers the modern steamships but has built a wide variety of types of vessels, including several sailing ships. For example, Bob recently completed a R/C harbor tug which made its debut on the pond on July 4, and he also completed a destroyer. For gifts for his wedding party a few years ago, he made minitures of ships out of HORNELOWER IN THE BALTIC. About that time he also made four minitures of the STAR OF INDIA, two of which were donated to the KPBS auction. About four years ago he did the CUTTY SARK, and VICTORY sections became popular among Guild members after Bob did one. Today none of these models belong to Bob because he either made them under contract or he gave them away as gifts. Bob spent three years with Bill Benson running the Gray Whale Ship Shop. In that time Bob's sole earnings came from the contracts he had for ship models. Bob says he learned a lot in his 'tour of duty' at the Gray Whale, as well as having fun and earning a living at the same time. Now he gets a regular pay check working for the Maritime Museum, and, after a few months away from it, he is still making models professionally.

The only ship model Bob owns at this time is his pride and joy, the ARIZONA, which won first prize in its division both at our contest this winter and at the MAC Show in Anaheim. From ages 10 - 16 Bob lived in Hawaii, and not only did he go aboard the actual ship (before the time of the concrete memorial), but his daily paper route went right along the harbor. He claims to have built the Revell kit at least a half dozen times.

All but three of Bob's models are solid hulls since most contractors do not want to pay for the kind of time a plank on frame takes. Generally speaking, his plank on frames were kits while the rest are scratch built. While he has always used power tools, he carved the recent destroyer with a plane, with very satisfactory results. He would like to see someone who is experienced in using planes and chisles to do a presentation at one of our Guild meetings. One of the handiest tools Bob has found is a file card for cleaning files. He has also discovered that Merit Abrasives (maker of SANDOFLEX) makes small sanding disks that fit the Dremel chuck and which snaps on instead of gluing on, and which does a super job.

Bob's tip to pass along to us is his excellent painting method. After sealing the wood, he uses a good sanding type primer, followed by air brushing with enamel paint and using 220 paper.

For his contributions to the Guild, especially in editing this Newsletter, and for his excellent modeling skills, we salute Bob Crawford. One way to show thanks for all his hard work is to submit articles, he can't do this alone!

REGATTA PICNIC

After the day's running on Saturday, beginning around 5:00 P.M. there will be a pot-luck Bar-B-Que and Picnic followed by our Parade of Lights Extravaganza and open night running.

For the Picnic there will be a huge barbeque brazier (brassiere?) available with charcoal furnished by the Guild. Each family or group will supply their own meat and cooking utensils and a side dish large enough to feed at least six people. We will need appetizers, salads, hot dishes (other than main courses) and desserts. Further information will be supplied in the next newsletters.

Anyone interested in volunteering to coordinate the food portion of the Picnic please contact Doug McFarland at 271-7148 or at one of the meetings before the Regatta.

Last year our night running portion of the Regatta was very popular and we expect many more participants this year. Everyone is invited to participate, so if you haven't already wired up your model for night operation, you'd better get started. Whether for imagination or realism, the choice is yours. The winning model will be determined by popular vote and a suitable trophy will be awarded. Let's all be there with ~~bells~~ lights on!



&



HELMSMEN



Sponsored by the SHIP MODELERS ASSOCIATION and the HELMSMEN YACHT CLUB.

WHAT: All types of model ships or boats---steam, electric, (solar ?), sail, etc. Park rules exclude gas powered models, sorry.

WHEN: Sunday, August 9, 1981. All day. Park opens 7:30 AM. Check in boats before 9:00 AM.

WHERE: El Dorado Park, Long Beach, Cal. There is a \$2.00 per car entry fee into the park. (Note: map is highly "compressed" and not to scale).

ENTRY and AWARDS: There is a \$3.00 per boat entry fee and covers all events. Awards will be made through 3rd place in all classes and all entrees will receive a memento of their participation.

Clip and Mail →

----- (over) -----

ENTRY FORM

REGATTA, SUN., Aug. 9, 1981. Ship Modelers Assn./Helmsmen Yacht Club.

NAME: _____, PHONE: _____

ADDRESS: _____, City _____ State _____ ZIP _____

Number & type of boats entered: _____

Radio frequencies you have available (by colors, please): _____

Note: NO Aircraft frequencies permitted.

Fee: \$3.00 per boat. Make checks payable to Ship Modelers Assn.

Mail checks with entry form to: Jack Elem,
/redacted/

For further information,
call Jack, 714/525-8147.

5

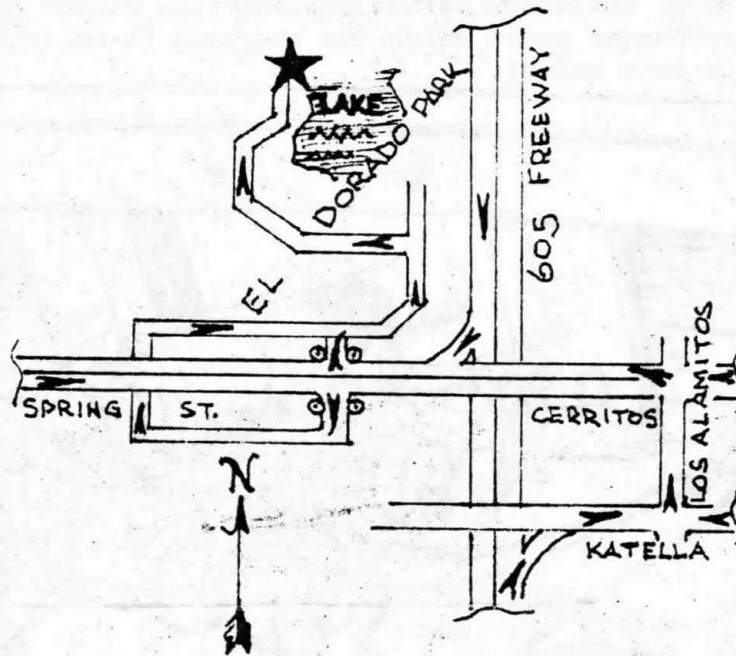
EVENTS: All events will be "low-pressure" with your fun and interest in mind, and whether you place or not it will be good practice and there will be a lot of nice people there to tell you how great your boat is---Relax!!!

1. Bollard Pull Test: (Power) Boats will be handicapped, so everyone has a chance.
2. Straight Steering & Maneuvering: (Power and Sail).
3. Predicted Time: (Power and Sail) Around a given course.
4. Special: Devices and Effects demonstration.

Note: 50% of points will be awarded for stand-off "scale appearance", in and out of the water, and craftsmanship.

Suggestions: Bring folding chairs, cameras, picnic lunch (a snack bar is available in case of dire need).

Long Beach.



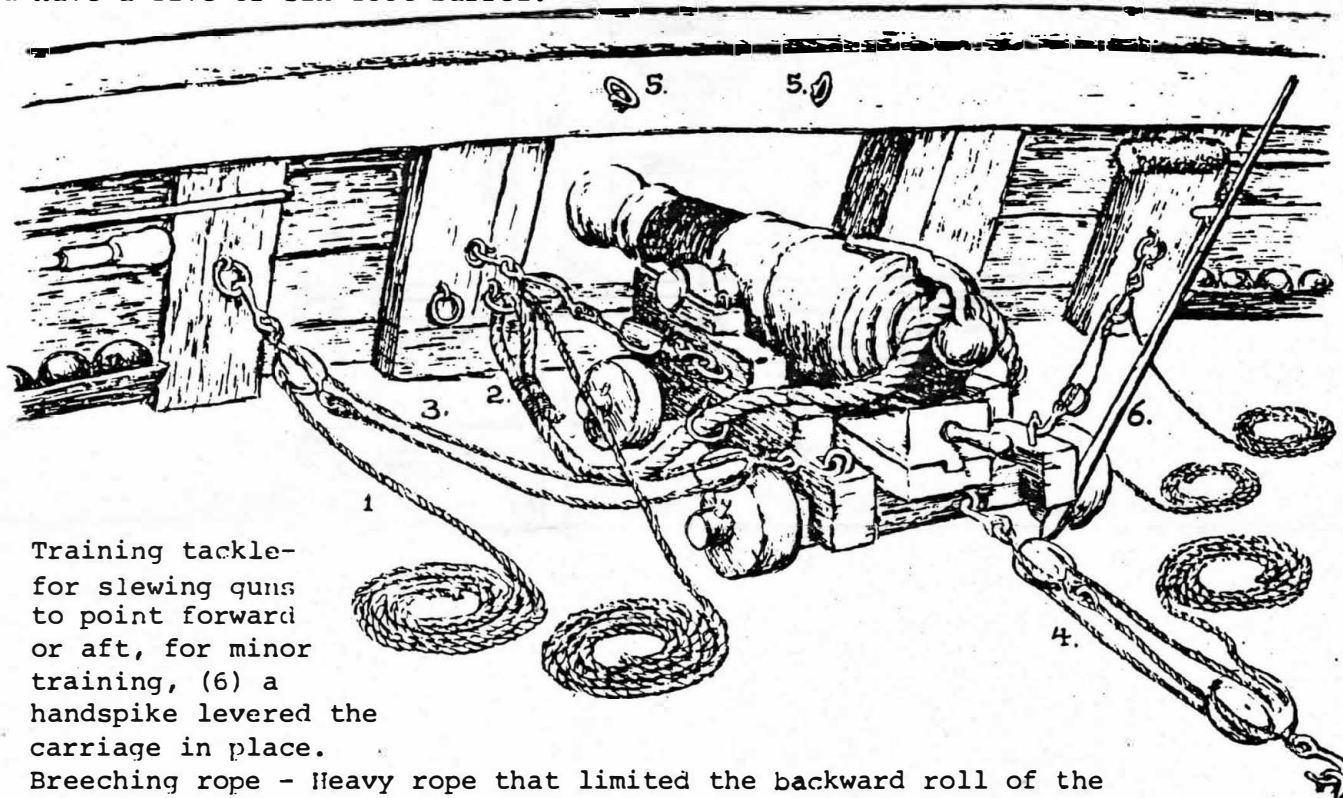
CANNON



Gun from the privateer "Nancy" Connecticut - Captain Phipps.

When land had dipped below the horizon, all hands were called to quarters. This was the first of many such drills. The ship was cleared for action. All fires - cooking, and lantern must be extinguished. The cannon crews would drill over their inaccurate iron tubes until loading and firing were second nature.

The privateer's cannon made a brave show of it along the gunwales with their red wooden carriages and blacked barrels. Theirs was the thunderous voice of the citizen ship. As sea-going armament went, their roar was not very large. A small vessel would carry four-pounders (for cannon were known by the approximate weight of its shot) while her larger privateering sister might boast of six-pounders. A four-pounder might weigh one thousand to twelve-hundred pounds and have a five or six foot barrel.

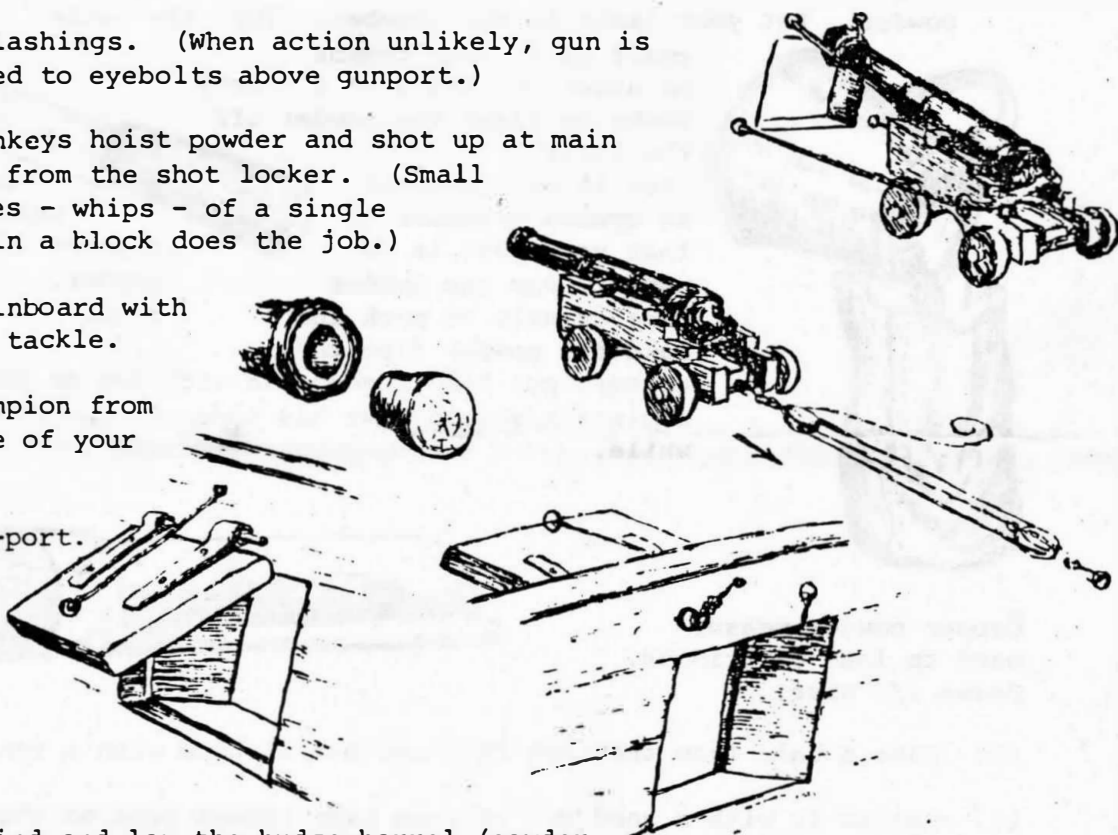


1. Training tackle - for slewing guns to point forward or aft, for minor training, (6) a handspike levered the carriage in place.
2. Breeching rope - Heavy rope that limited the backward roll of the carriage after firing. An extra ringbolt was provided if the other pulled out from the strain.
3. Side Tackle - for running gun out when ready to fire.
4. Train tackle - for hauling the gun in for loading.
5. Two eyebolts above gun-port - muzzle could be raised and lashed to these to secure gun in heavy weather.

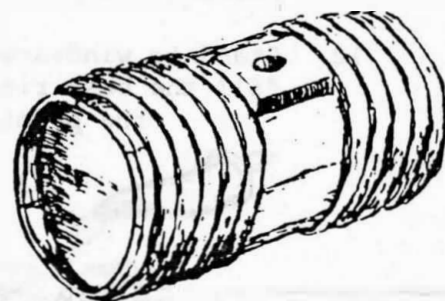
Weight and space occupied dictated that the privateer cannon be about two-thirds of the length of Washington's land cannon.

INSTRUCTIONS FOR GUNNERS --

1. Cast off lashings. (When action unlikely, gun is secured to eyebolts above gunport.)
2. Powder monkeys hoist powder and shot up at main hatch from the shot locker. (Small tackles - whips - of a single rope in a block does the job.)
3. Haul gun inboard with train tackle.
4. Remove tampion from muzzle of your gun.
5. Raise gun-port.

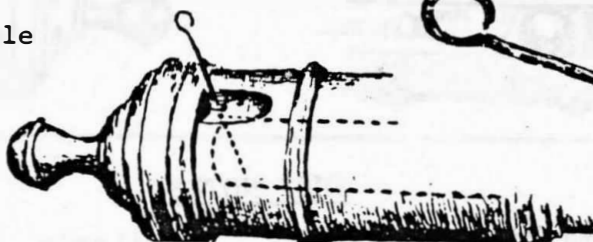
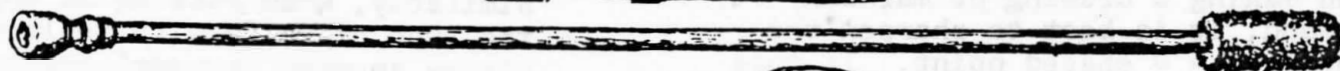


6. Observe wind and lay the budge-barrel (powder barrel) or cartridges (cylindrical flannel bags filled with gun powder) to the windward of your piece and the march staff or "linstock" to the leeward.



Powder barrel.

7. Clear touch-hole with pick.

Gunner's pick -
drawn 1/3 size.

Rammer / Sponger.

8. Sponge her well, and strike the sponge on the muzzle several blows to rid it of foulness (Breeching ropes limit muzzle room to but eighteen inches inboard. Sponger must lean well out of the port to ram home his long handled sponge.)



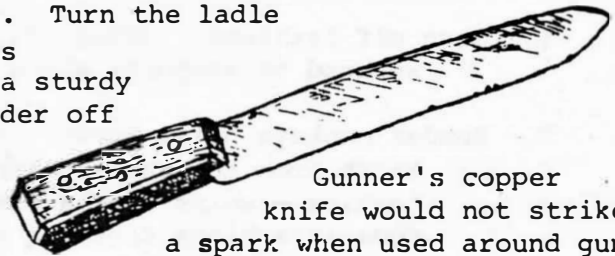
9. Stand to the right side of the gun and ram powder cartridge down full length of the bore. Or, if powder ladle is used instead, have the powder barrel held aslope. Thrust in your ladle, give it a shog, then strike off heaped powder. Put your ladle in the chamber. Turn the ladle



Copper powder measure
used to load cartridges.
Drawn 1/2 size.

staff until your thumbs be under it, and give a sturdy shake to clear the powder off the ladle.

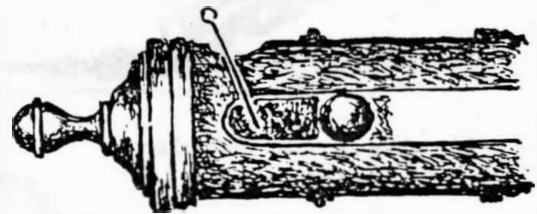
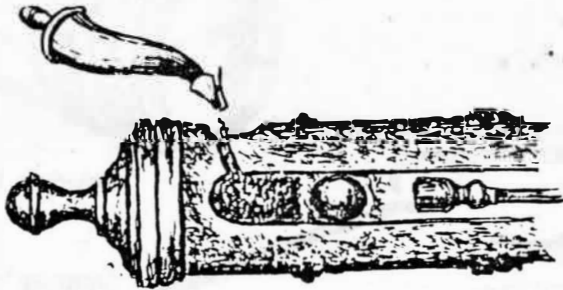
Draw it out, keeping an upward pressure so that no powder is removed. Ram the powder home quietly to pack and make the powder fire the better, put home a good wad with two or three strokes. Your assistant should have his thumb on the touch-hole all the while.



Gunner's copper
knife would not strike
a spark when used around gun-
powder. Drawn 1/4 normal
size.



10. Take a ball from the shot rack and put it home with a rammer.
11. Follow it with a good wad of rope yarn rammed home so that no space be between the powder, the first wad, the shot and the last wad.
12. Stand to windward and prime the touch-hole with fine powder, letting it fill the base ring. If a cartridge is used first prick it open so that the priming will set off the charge.



SHOP NOTES

When making a drawing or marking out of wood, it is best to sharpen the pencil to a V shaped point. In this way you can obtain a more accurate line. If, however, you are using a pencil or a compass with replaceable leads, it is far more convenient and better to sharpen the lead by making only one bevel. Resharpening is quickly effected by a touch on fine glasspaper as there is only one side to consider.

Similarly, when putting an edge on the type of knife with replaceable blades as used by model makers, sharpen it to a chisel edge, so that the lefthand side is kept flat as in the sketch if you are righthanded or the opposite way if you are lefthanded. In this way you will make vertical and moreover accurate cuts close u to a steel rule, as no allowance has to be made for the thickness of the blade of the knife.

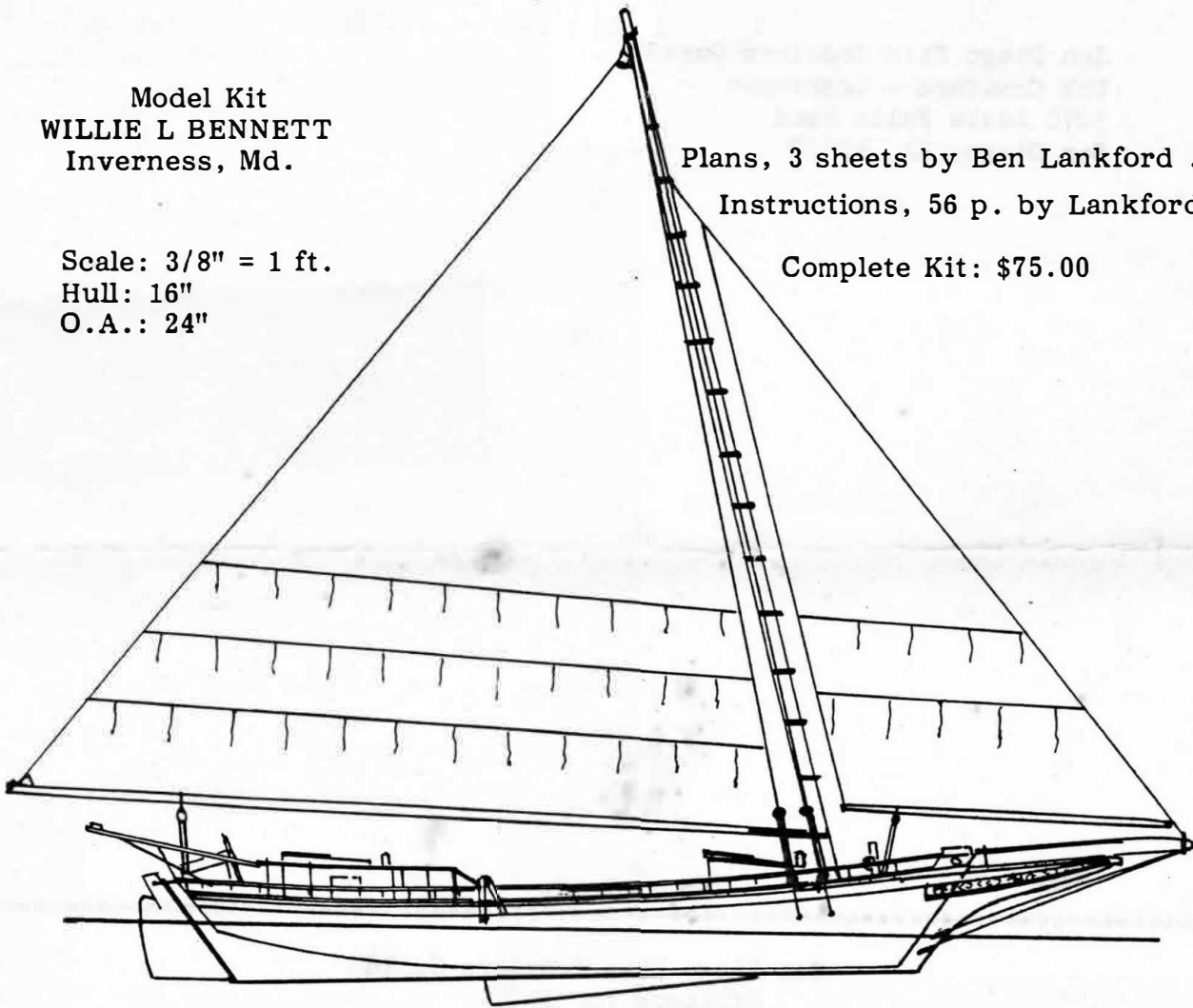
Model Kit
WILLIE L BENNETT
Inverness, Md.

Scale: $3/8" = 1 \text{ ft.}$
Hull: 16"
O.A.: 24"

Plans, 3 sheets by Ben Lankford ..\$8.00

Instructions, 56 p. by Lankford.\$9.00

Complete Kit: \$75.00



CHESAPEAKE BAY SKIPJACK
WILLIE L. BENNETT
1899

SAILING OYSTER DREDGE BOAT

The plans are authentic and highly detailed, based on hull lines originally taken off (1943) by H.I. Chapelle..

Instructions, with precise building sequence, contain 85 detail sketches to aid the modeller. This set of paper is truly a documentary on the skipjack. Like the cockroach and the shark, it is destined for the ages, its work cut out, its domain protected.

Construction is plank-on-frame, as with the prototype. Kit contains all wood, carefully scaled, to build hull and rigging. Fittings set contains whitemetal castings of intricate deck machinery and parts,, brass eyes, hoops, rings, chain, wire, angle, stranded wire for shrouds, cloth for sails, wooden deadeyes and blocks, etc.

Highly functional in design, no radical feature has surfaced to cause the fishermen to alter the stylized design represented by the WILLIE L BENNETT.

MODEL SHIPWAYS **BOGOTA, N. J.**

San Diego Ship Modelers Guild
Bob Crawford - Logkeeper /
redacted/



TO: /redacted/

San Diego Ship Modelers Guild
Officers for 1981

Master:	John Woodard	Point Loma	/redacted/
Mate:	Doug McFarland	Mira Mesa	/redacted/
Logkeeper:	Bob Crawford	State College	/redacted/
Steering Committee:	Bill Kelly-Flemming	Hill Crest	/
	Al L'heureux	Poway	redacted
	George Oliver	Santee	/
	Bob Ross	Chula Vista	redacted
Meetings:	3rd Friday of each month, 8:00 pm aboard the Bark Star of India, on the Orlop Deck.		
Membership:	Dues for Members of the San Diego Maritime Museum and anyone living outside San Diego County - \$7.50 Non-Museum Members - \$15.00. After July 31, 1981 dues are $\frac{1}{2}$ for the remainder of the year.		