



# San Diego Ship Modelers' Guild

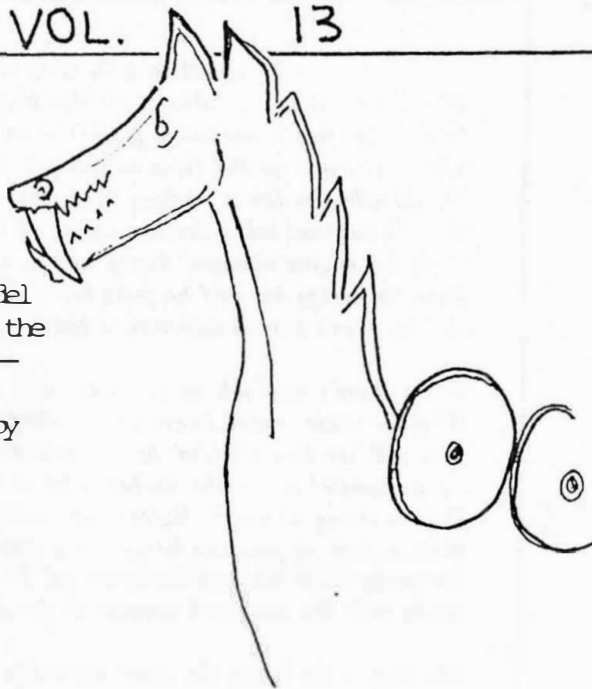
/redacted/

VOL. 13 NO. 10

## OSBERG ROYAL YACHT

"KNUT'S KNU"

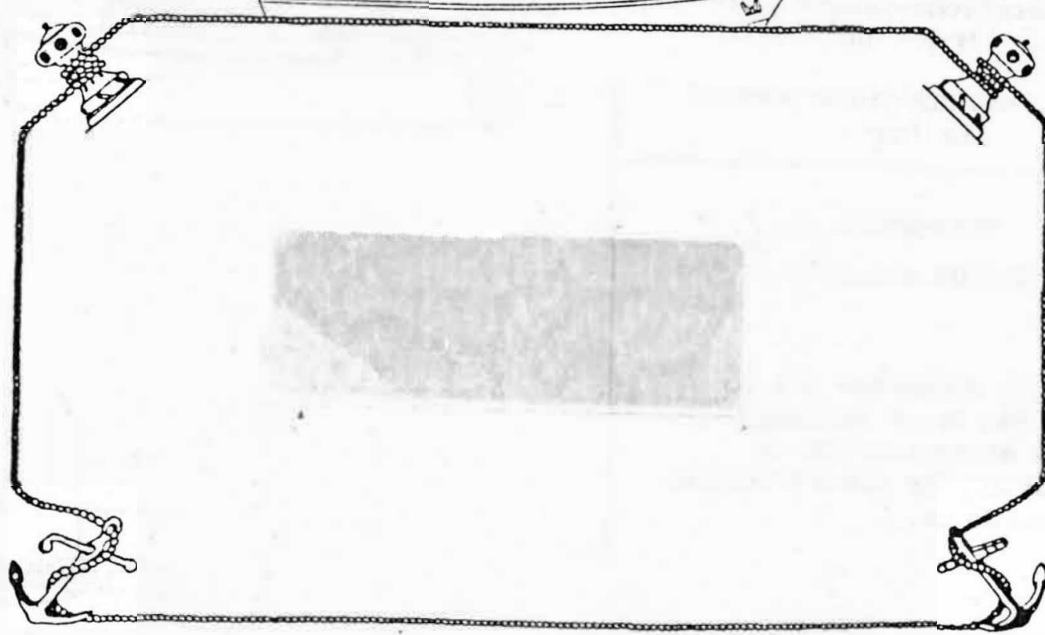
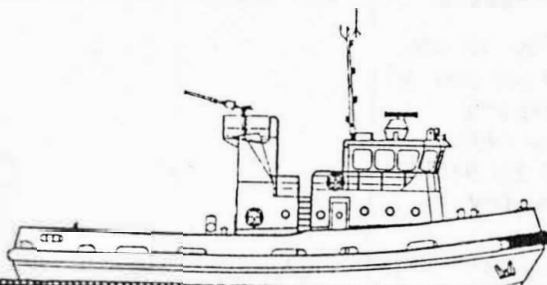
Dick Johnson's newest model completed its sea trials the 2 channel Billings kit — VIKING SHIP has all the earmarks of a winner happy sailing—Dick....



San Diego Ship Modelers Guild

MIKE RIVERA

/redacted/



# SAN DIEGO SHIP MODELERS GUILD

## OFFICERS FOR 1989

### MASTER

Doug McFarland (redacted)

### MATE

John Fluck (redacted)

### PURSER

Bob Willis

### LOOKKEEPER

Doug Smay (redacted)

### NEWSLETTER EDITOR

Mike Rivera (redacted)

### STEERING COMMITTEE

Ed White

Bob Crawford (redacted)

Ralph Aruda (redacted)

Roy Wilson (redacted)

## SCHEDULE OF ACTIVITIES

MEETINGS- Third Friday of the month  
7:30 PM social  
8:00 PM meeting

STATIC WORKSHOP-Every other Tues. 7:00 to 9:00PM  
aboard the ferry Berkeley

R/C Operations-Saturday mornings  
Model Yacht Pond

ANNUAL REGATTA-Third weekend  
in June

## MEMBERSHIP

Dues are \$10.00 annually

We strongly encourage all to join the San Diego Maritime Museum as an expression of appreciation for the facilities they provide us.

## HIS MAJESTY THE TUG BOAT

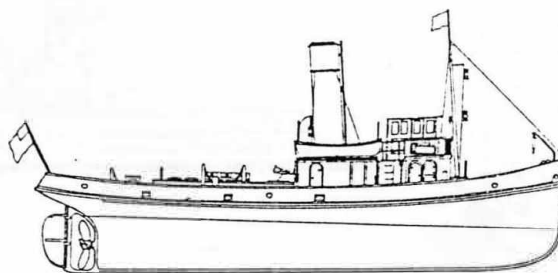
(Dedicated to a Winner and a Sport)

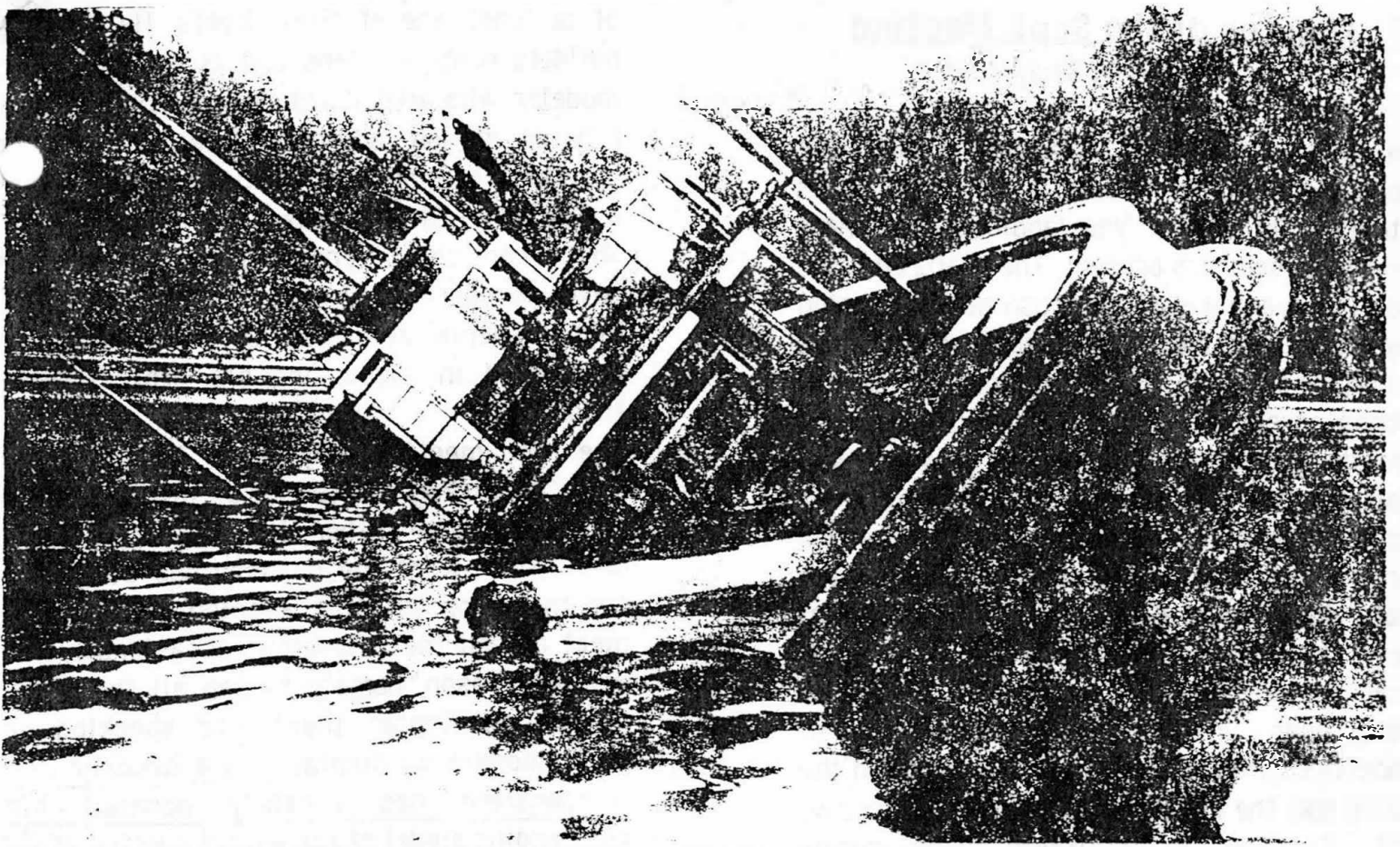
*The Liner — she's a lady; that's the reason why, no doubt,  
She always needs assistance gettin' in an' gettin' out;  
She can't come up the river and she dassn't dock alone  
So she whistles for a tugboat in a most implorin' tone.  
An' the tugboat takes the hawser an' his wake begins to boil  
With his engine chuggin' lively and consumin' Diesel oil.  
Then he swings her and he pulls her — like a cowboy drivin' stock,  
An' he hasn't got no manners — but he gets her to the dock.*

*When there's any job to tackle he will take it anyhow  
Whether towin' racin' liners or a garbage scow.  
You will see him ploddin' heavy with a raft of rollin' logs.  
Or a-chuggin' down the harbor with a barge of squealin' hogs.  
With a string of empty lighters or a ship from 'round the Horn,  
With a fleet of pleasure barges or a freighter full of corn.  
He yanks them through the river an' his husky whistle blows  
As he tells the wayward steamer to be lookin' where she goes.*

*The Tug — he bucks the river when it's full of grindin' ice.  
An' when there's trade to handle, why, you needn't call him twice.  
For he's there a ridin' combers maybe fifty miles at sea  
An' he doesn't stop for danger when he's lookin' for a fee;  
He's a little giant helper, he's the live wire of the port.  
He's a nerry, nifty snorter an' a winner an' a sport,  
He's the snubby-nosed exploiter of the chances of the game  
An' he's never much on beauty, but he gets there just the same.*

(Author unknown)

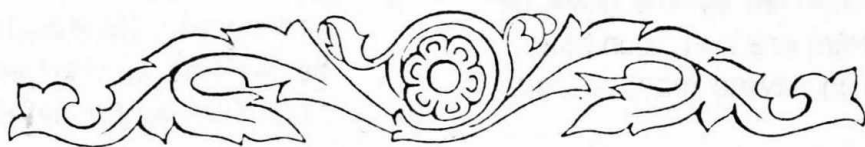
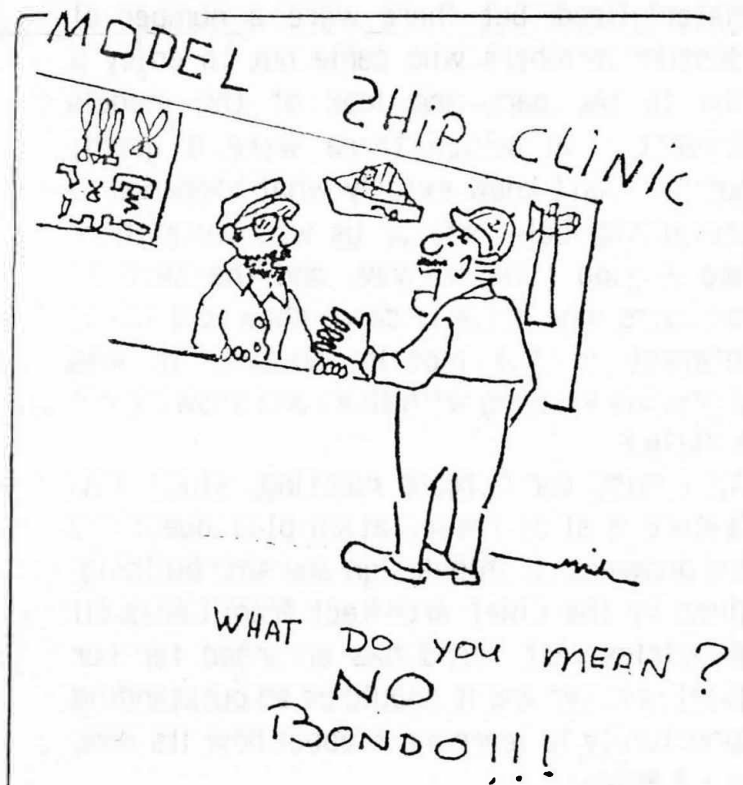




#### HAVING PROBLEMS?

Is your project not getting anywhere?  
Do you feel like your model boat is slowly  
sinking in a sea of what seem like an  
unending, unworkable problems....well,  
TOO BAD.

All kidding aside; we are here... we are  
your Guild and we have all gone through this  
before at least once or twice, some of us  
go through it every time we start a new  
model— SO why not come to the meeting on  
October 20th, at 8:00 pm aboard the  
**STAR OF INDIA**— bring your — boat and  
questions the worse that could happen is  
that you'll go home totally confused with  
all the different suggestions, and answers—  
you might even finish your model.



## Minutes of the Sept. Meeting

by Doug Smay

Guild Master Doug McFarland called the meeting to order promptly at 2000 hours (thats 8:00 PM for you landlubbers!). There were 20 members present. The featured topic for the evening - an air brush demonstration by representatives from Reeds Hobbies - had to be cancelled at the last minute, but Gordon Jones agreed on very short notice to hold a "hands on" session on knot tying, which was both fun and educational. Thanks Gordon for a good job under less than ideal circumstances! Announcements were made that the Golden Gate Model Yacht Club would hold its annual regatta on Sat. and Sun., Sept. 16-17, and that the Presidents Day regatta would be held near Pheonix next February. Also announced was the annual picnic between the Guild and the Maritime Museum on Saturday, Oct. 7. (The picnic itself never really materialized, but there were a number of Museum members who came out to enjoy a day in the park and look at the models present - of which there were a goodly number. Don't know exactly what happened to the picnic, but those of us who were there had a good time anyway, and the museum members who made it down showed a lot of interest in the models present. It was enjoyable visiting with them and showing off a little.)

Don't miss our October meeting, which will feature a slide presentation plus questions and answers on ship design and ship building, given by the Chief Architect from Campbell Industries. Art Yeend has arranged for our guest speaker and it should be an outstanding opportunity to learn more about how its done in 1:1 scale.

Also at the October meeting a fellow named John Jadwinski will be joining us as a guest. John has been commissioned by the Navy to restore several Viet Nam era river gun boats. He is interested also in having models made

of at least one of these boats. He has the builders original plans and is looking for a modeler who will build the models. He will fill us in on additional details at the meeting. The modeler need not necessarily be a San Diego Ship Modelers Guild member. If any other clubs receiving our newsletter have members with an interest in these highly specialized vessels, John would be interested in discussing his project with them.

The Nov. meeting may be a "large model night" if arrangements can be made to meet on the *Berkeley* rather than the *Star*. It all depends on what the museum has scheduled for the *Berkeley* that evening. Its nice to meet aboard the *Berkeley* occasionally for another reason, namely to see all the great models on display there. And speaking of great models on display, Guild member Joe Bompensiero has recently donated his outstanding model of the escort carrier U.S.S. Shamrock Bay to the museum. Joe's fine model takes its place along side Albert L'heureux's model of *U.S.S. Missouri* and Bob Crawfords model of *U.S.S. Wasp*. It was a class thing to do Joe. Congratulations!

Before leaving the subject of the Nov. meeting, I have contacted Phil Toy and arranged for him to be present with some of his incredible plastic model ships. If you have never seen any of Phils work you don't yet understand the meaning of the word "Detail". Phils models have been featured in a number of magazine articles and are consistant winners at IPMS competitions. They are amongst the most finely detailed and impressive miniatures I have ever seen. This should be a don't miss opportunity to see some unbelievable models and meet the modeler.

Jay MacMaster announced that he has a contact who has access to a variety difficult to find woods, including walnut, pear, apple, lime and others, which he would be willing to exchange for some modeling help. See Jay for details.

Note: Apparently there were a few errors in the hint given in last months newsletter about fast charging nicad batteries. Sorry, I didn't follow exactly what the problem was, but if you intend to use this system be sure to check with Al Berger or Doug McFarland first, they can provide the correct details as to how this can be done without damaging your batteries or possibly even causing personal injuries.

### Show and Tell

**Bob Wright** described his recent trip to the Balkans and in particular to Czechoslovakia and Yugoslavia. Bob visited a hobby store in one of these countries - referred to there as a "technical store". The store had hobby items relating to model trains, planes and ships. He brought back several plan sets that appeared to be of very high quality, and which Bob reports were very reasonably priced. He states that the governments in the Balkan countries were rather repressive but the models he saw were very good. He also visited the Arsenal museum in Vienna, where he saw some really fabulous models, including two made from metal; one a battleship about 15 feet long and the other a submarine about 8 feet long, both being half models with one side showing the external details of the vessel and the other side showing all of the internal details. Bob says as far as he could tell none of the internal details were left out! Bob also donated a Revell plastic model of *U.S.S. Constitution* which is available to the highest bidder. Bob purchased the model at an auction for a song and is willing to donate to the guild any proceeds above his purchase price.

**Fred Froese** brought in a 1/16" scale freighter hull that he purchased as part of a lot. The hull was partially pre-carved from a solid block of wood and cost about \$198. Fred also brought in one of his own freighter hulls

to the same scale, built up in the bread and butter method and carved by himself. The cost of Freds hulls are only about \$20 for materials and are in every respect equal to or better than the purchased product. Fred has carved quite a number of these freighter and oiler hulls and brought pictures of several of them.

Mike Rivera brought in a Victorian tug and a Saito steam plant. The hull for the tug was made of fibreglass and was purchased from the U.K. for about \$60.

**Jay MacMaster** brought in photographs of *HMS Dolphin*, which he built on commission and has now delivered to the owner. Under the contract Jay had one year to complete the model. He actually completed it in one year and two weeks. The model is mounted beautifully in a display case on a base made from decorative dolphin ornaments taken from an antique music box. From the photographs it was clear that the model turned out beautifully - in keeping with Jays usual high standards. In fact the owner was so pleased that he has commissioned Jay to build another model of the same ship - only this time the hull will be fully planked and painted on one side and only partially planked and unpainted on the other. Where planking is missing the model will show the hulls structural members and interior detail. Part of the deck will also be left unplanked to show interior detail. Jay figures he received approximately \$0.50 an hour for his work on the first model, but he was able to acquire some nice tools as part of the deal. During the course of the project he was also featured on a local TV program. This time however he is going to spend a little more time computing the amount of the commission.

**Vic Crosby** brought in another of his ships in a bottle, this one being a Gloucester Schooner named the *Edna Christiansen*, which carried lumber and salmon between Alaska and the lower 48 for the Olson Line



The model has a partially open hull to show the structural details. Most of us who saw it agreed that we probably could not duplicate the model outside the bottle! How Vic does it inside a bottle is truly a mystery. Another mystery is that the cork in the neck of the bottle has a screw through it on the inside of the bottle which prevents the cork from being withdrawn. Vic would not even give us a clue as to how he did that!

**Bob O'Brien** brought in a 5" gun turret he purchased from Sirmar in the U.K. to be installed on his model of *U.S.S. Essex*, CV-9. The turret was cast from resin and showed very good detail. It apparently was hollow because it did not weigh as much as similar cast items from other suppliers.

Doug McFarland, having completed *Hotspur* has moved on to a new project, a sail boat named *Incentive*, because it provided him with the incentive to finish *Hotspur*. The new model will be radio controlled. and in addition to sails will also include an electric in-board/out-board motor which can be raised and lowered remotely. (Just the thing for when the wind dies on the pond!)

Apologies to Phil Moore, who was misidentified as Phil Glaser in last months newsletter. Sorry chief, we'll try to get it right next time!

Note: From the U.S.S. Constitution Model Shipwright Guild Newsletter - mark your calendar for Sunday evening, Oct. 29th at 9:00 PM. The Turner Broadcasting System will televise a National Geographic special on the just discovered German Battleship *Bismark*. (It is not known if the time, which was given as 9 PM, E.S.T., will be the same in San Diego, so you may want to check the local listings)