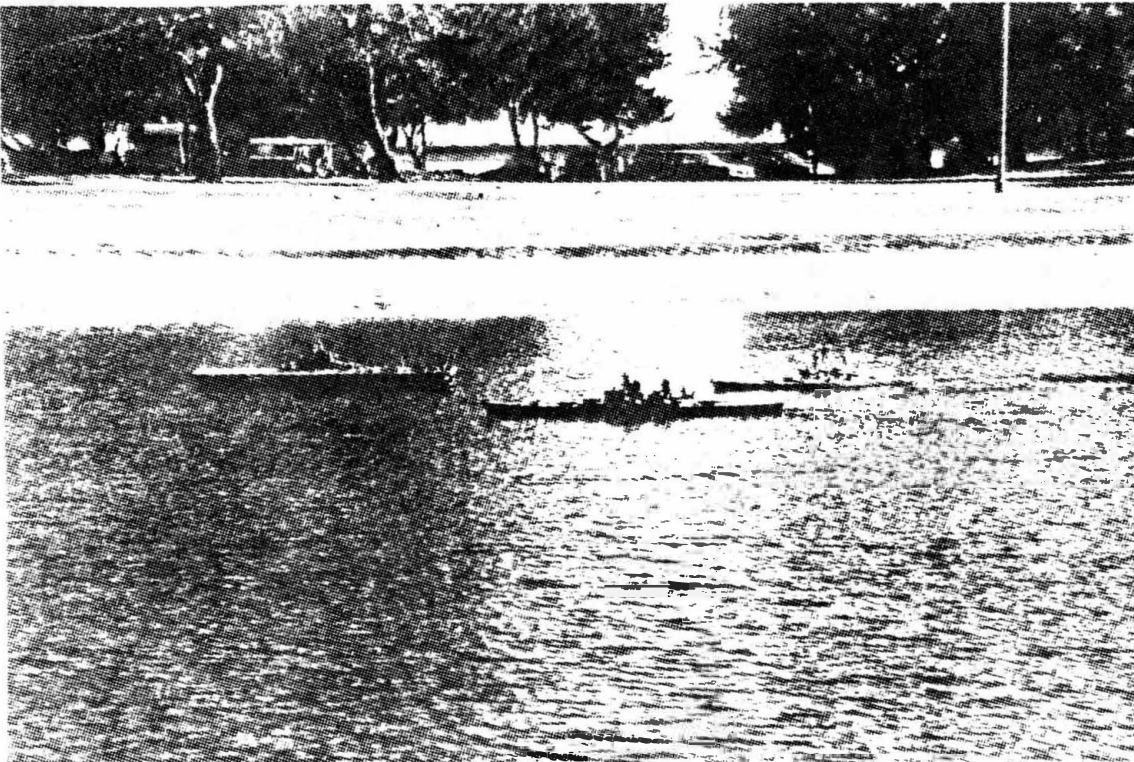




"Winner's Circle" 1994 SDSMG Regatta

Photo submitted by Jim Hawkins



"Task Force formation steaming" Bob O'Brien's USS Essex (CV-9) plus two "Iowa class" battleships.

1994 SDSMG REGATTA WINNEPS

TUG:

	<u>First:</u>	<u>Second:</u>	<u>Third:</u>
Model -	"Dorthy Greiner"	"St. Abbs"	"Wedell Foss"
Modeller:	Kurt Greiner Millbrae, CA.	Richard Marshall Colorado	BOB WILLIS Poway, CA.

WORKBOAT:

Model -	"Splendor"	"Workhorse"	"Pacific Escort"
Modeller:	Victor Gutierrez Sunland, CA.	Charlie Brown	Butch Plake (Orange County)

MILITARY:

Model -	USS San Diego	R.A.F. 31	USS Belleau Wood
Modeler:	DAVE MANLEY San Diego, CA.	Karl Kalb Boston, MA.	Tom Foller York, PA.

SMALL BOAT:

Model -	"Betty Boop" DAVE MANLEY San Diego, CA.	PAUL THOMPSON Chula Vista, CA.
---------	---	-----------------------------------

SAIL:

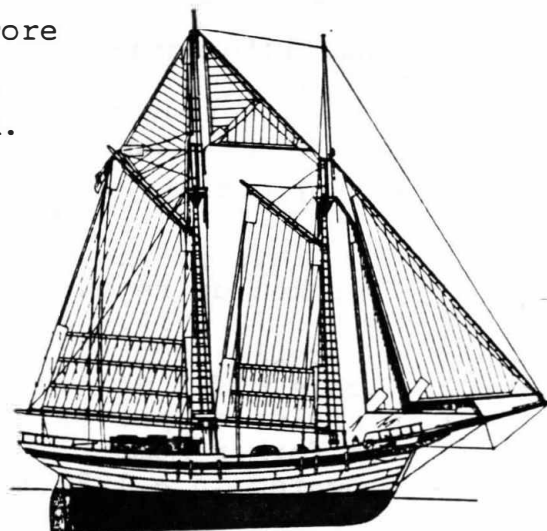
Model -	"Dove"	"Inga"	"Dowitcher"
Modeller:	Dave Endert Upland, CA.	BOB CORNELL San Diego, CA.	Dave Endert Upland, CA.

SUBMARINE:

Model -	U-61	USS Albacore
Modeller:	DAVE MANLEY San Diego, CA.	MIKE DORY Poway, CA.

PLEASURE:

Model -	"Highlander"
Modeller:	Richard Marshall Colorado



1994 SDSMG REGATTA WINNERS (continued)

STATIC COMPETITION --

	<u>First:</u>	<u>Second:</u>
<u>MILITARY/BEST OF SHOW:</u>		
Model -	USS Olympia	
Modeller:	Leo Milowicki	
<u>CIVILIAN:</u>		
Model -	"Chrissy K"	"Monterey"
Modeller:	Kenly	Jardim
<u>WORKBOAT:</u>		
Model -	"Seguin"	"Barbarck"
Modeller:	Jardim	Kington
<u>NOVELTY:</u>		
Model -	"Jessie"	"South Sea Island"
Modeller:	BOB WILLIS Poway, CA.	Ed Bair

DOCKYARD:

Model -	USS Arizona
Modeller:	Kevin D. Gatton

Editor's Note:

This information was supplied by Master/Commodore Jim Hawkins. Thanks for all your untiring efforts, Jim.

Congradulations to all the winners, especially Dave, Bob Willis, Bob Cornell and Paul Thompson. WELL DONE!

BUILDING SCALE R/C MODEL WARSHIPS:

This is the title of a new Challenge Publications magazine that I picked up recently at a news stand. It was also marked Volume I; Number 1, 1994. Being a model magazine collector from way back, I was naturally excited until I inspected the contents. As a subscriber to "Scale Model Ships" for more than ten years, I recognized most of the articles as previously published. One of particular interest was about our former member, Albert L'Heureux's heavy cruiser USS ST PAUL which appeared in a 1990 issue of SSM. On the same news rack, I noticed a couple new mags for plane buffs (we have several in our membership). Both were labeled Vol 1, Number 1 1994. One issue covered WWII P-38 fighters, the other, B-17 bombers. I suspect these all came from back issues of Air Combat. --Anyway, first editions do make for collectors' items, especially if they are not followed by issue #2.

MODEL BOAT POND SCHEDULE:

This has been a very big summer for the SD Argonauts at the pond with all the various meets/races. Some of us just check our small abbreviated schedules and note the pond being closed for open running. This month scheduled events again take place on the next two Saturdays. The following is provided for info. You may want to come down and check these events out. Thanks to the Argonauts for this info. Good luck with your races and have fun.



San Diego Argonauts R/C Model Boat Club



Proudly Present

"Race Week '94"

**August 13-21 San Diego Model Yacht Pond
West Vacation Isle Mission Bay Park**

Date	Class	Race Director
AUG 13 & 14	U.S ONE METER	BILL SAGE/JIM HAWKINS
AUG 15 & 16	S/B & SOLING 1 DESIGN	STEVE ANDRE/SPANGLER
AUG 17 & 18	INFINITY 54 & 36-100 MONO	GALLO/TOLER
AUG 19	LAY DAY	
AUG 20 & 21	MARBLEHEAD	BOB DEBOW/STEVE ANDRE

Skippers Meeting 9:30 A.M. Each Day

First Race 10:00 A.M.

Lunch Break at Noon Each Day

**For Information Contact:
Regatta Director/Chuck Black
4761 Niagara St.
San Diego, CA 92107
222-4772**

FOR THE WWII NAVY BUFF - H-R PRODUCTS, INC.:

This company puts out a four page catalogue for the price of your self-addressed, stamped envelope. Now how can you beat that?? Anyway, I recently received their 1994 edition. For the benefit of all you who do 1:96 (1/8 scale), those items are included in this newsletter as well a notice of items discontinued. They feature scales from 1:384 to 1:16. Will try to run a listing of their 1/32 and 1/16 (1:384 and 1:192) next month.

1994

H-R PRODUCTS, Inc.

POST OFFICE BOX 87
McHENRY, ILLINOIS 60051
815-385-6457

SHIP FITTING PRICE LIST - U.S. NAVY WWII

The scale of your model is determined by the following formula.

$$\frac{\text{Length of your model in inches}}{\text{Length of the actual ship in feet} \times 12} = \frac{1}{???} \text{ or } 1:???$$

USN TERMINOLOGY: BB-Battleship, CA-Heavy Cruiser,
DD-Destroyer, DE-Destroyer Escort, SS-Submarine.

bits are designated by the diameter of their posts. Chocks by the width across their opening. Items such as bits, chocks, propellers, anchors etc. may be used for several scales. For example a 20" bit in 1:96 would be a 10" bit in 1:48.

All parts are cast from a non-corroding, high tin content alloy. We recommend assembly with Devcon Epoxy, "Hot Stuff" or "Super Glue".

MINIMUM ORDER \$5.00

Postage is \$1.00 extra on orders under \$10.00. 10% extra on orders from \$10.00 to \$50.00. 6% on orders above \$50.00. Light weight, small orders will automatically be sent first class (air). Heavier orders (over 12 oz.) will be shipped UPS when possible. Overseas airmail is 20%. Small parts are not identified in packaging. If identification is required please add 25¢ per type of item. NOTE: this charge is not to be discounted. We are not able to accept charge cards. A personal check is okay, in US funds. PLEASE! NO PHONE ORDERS.

PLEASE NOTE: THE FOLLOWING RESIN-CAST ITEMS ARE NO LONGER AVAILABLE

S192-20 5"/38 Twin Closed Mount
S144-25 5"/38 Twin Closed Mount
S96-96 5"/38 Twin Closed Mount
S48-47 25 Man Rect. Life Raft
S20-3 20mm Oerlikon Mk4 Mount
S20-18 PT Boat Mast 1944

S96-97 5"/38 Single Closed Mount
S96-99 26" Whaleboat
S96-100 Mk 37 (5") Gun Director
S32-15 Torpedo for use w/S32-1 Rack
S20-17 PT Boat Mast 1945
S20-20 Torpedo, Mark 13



HERMAN



"I told you on the phone we'd be taking my new boat out."

H-R PRODUCTS, Inc.

SHIP FITTING PRICE LIST - U.S. NAVY WWII

POST OFFICE BOX 87
McHENRY, ILLINOIS 60051
815-385-6457

(1:96) 1/8" = 1' SCALE

S96-1	20mm Oerlikon Mk 5 Mount	1.25	S96-35	DD Stack Side Louvers	.35
S96-2	40mm Twin Bofors	2.50	S96-36	Vert. Ladder approx 2"lg	.35
S96-3	40mm Quad Bofors	5.00	S96-37	Fighting Lights	.20
S96-4	Deck Hatch w/scuttle	.35	S96-38	3"/50 Sng.Mk 22 Mount	4.00
S96-5	W/T Door	.35	S96-39	5"/38 Twin Mnt.Sight Hd.	.35
S96-6	Cable Reel	1.50	S96-40	5"/38 Mnt Capt.Blast Hd	.50
S96-7	Ready Service Locker	.75	S96-41	Paravane	1.50
S96-8	Fire Hose Reel	.35	S96-42	Anchor 3/4"x3/4"	.75
S96-9	Draped Fire Hose	.30	S96-43	3"/50 Ready Serv.Ammo Box	.75
S96-10	Twin CO2 Cylinders	.35	S96-44	SG Radar	.30
S96-11	25 Man Rect. Life Raft	1.00	S96-45	40mm Ammo Clip 4x4	.35
S96-12	Floater Net	1.00	S96-46	Loudhailer	.25
S96-13	Smoke Generator	1.00	S96-47	Mk 51 40mm Gun Director	.50
S96-14	Standard Compass	.50	S96-48	25 Man Oval Life Raft	.75
S96-15	Pelorus	.35	S96-49	Hatch, Oval	.25
S96-16	20" Bitt	.60	S96-50	Stack Vant, DD	.60
S96-17	DD Bow Chock	.35	S96-51	20mm Ready Serv.Ammo Box	.75
S96-18	21" Closed Chock	.50	S96-52	20mm Sng. Tripod Mount	1.25
S96-19	16" Roller Chock	.50	S96-53	20mm Sng. Mk 4 Mount	1.50
S96-20	10" Bitt	.35	S96-54	40mm Bofors Single	2.50
S96-21	12" Closed Chock	.25	S96-55	5"/38 Single Open Gun	7.50
S96-22	20mm Twin Oerlikon	1.75	S96-56	4"/50 Single Open Gun	3.00
S96-23	"K" Gun for Depth Chrg.	.30	S96-57	1.1 Quad Machine Gun	3.00
S96-24	Depth Charge	.30	S96-58	Base Ring 5"/38 Twin	1.50
S96-25	Torpedo Tube Sng. (Com- bine for Quad etc. See #s S96-92 & 93)	1.75	S96-59	Base Ring 5"/38 Sng.	.75
S96-26	Torpedo Director	.60	S96-60	Escape Hatch, SS	.50
S96-27	Davit, Whaleboat	1.00	S96-61	Capstan, SS	.35
S96-28	5"/38 Prac.Load.Mach RH	2.00	S96-62	5"/25 SS Deck Gun	5.00
S96-29	36" Searchlight	1.50	S96-63	Hedge Hog Launcher	5.00
S96-30	5"/38 Prac.Load.Mach LH	2.00	S96-64	5" Gun Dir. Radar	2.00
S96-31	24" Searchlight	.50	S96-65	Side Lights P&S (pair)	.75
S96-32	12" Signal Light	.25	S96-66	Ship's Bell	.20
S96-33	Deck Bolster, Anchor Chn.	.35	S96-67	Siren .6" long	.35
S96-34	Life Bouy	.25	S96-68	Siren .4" long	.25
			S96-69	Incl. Ladder 2.5" long	.75
			S96-70	Boat Winch	.75
S96-71	Ribbed Door in Frame	.50	S96-89	Torpedo Crane, DD	1.50
S96-72	W/T Door w/port	.35	S96-90	3"/50 Twin Auto.Mk 33 Gun	12.00
S96-73	Turret Hatch	.25	S96-91	Torp. Tube Blast Shield	1.00
S96-74	Deck Hatch w/o scuttle	.35	S96-92	Torp. Tube Quint/controls	7.50
S96-75	5"/38 Gun Barrel	.30	S96-93	T.Tube Quint w/blast shld	8.00
S96-76	5"/38 Gun Barrel w/bloomer	.50	S96-94	5"/51 Gun Pre WW11 BB	3.00
S96-77	5"/25 DP Gun BB or CA	5.00	S96-95	Sailor at Ease	.50
S96-78	Engine Order Telegraph	.30	*S96-96	5"/38 Twin Closed Mnt	12.00
S96-79	CO2 Fire Extinguisher	.30	*S96-97	5"/38 Single Closed Mount	8.00
S96-80	"Y" Strainer Fire Plug	.25	*S96-99	26" Whaleboat	10.00
S96-81	6" Bitt	.20	*S96-100	Mk 37 (5") Gun Director	5.00
S96-82	30" Cleat SS	.20	S96-101	Jap 25mm AA Gun Single	2.00
S96-83	40" Cleat/roller Chock SS	.25	S96-102	Jap 25mm AA Gun Double	2.25
S96-84	Deck Hatch SS	.30	S96-103	Jap 25mm AA Gun Triple	2.50
S96-85	Stern Chock SS	.30	S96-104	Three blade Prop. 1.1" Dia	.75
S96-86	3 Blade Prop. 1/4" diam.	.25			
S96-87	German U-Boat 8.8 cm Gun	1.00			
S96-88	German U-Boat 2.0 cm Gun	.75			

HISTORICAL RESOURCES FOR MODELS OF U.S. NAVY SHIPS

I. SHIPS PLANS

Most existing USN ship's plans 1776 - 1949:

U.S. National Archives
NNSC
Washington, DC 20406
(202) 756-6700

The only source for ships plans within the Navy for ships built after WWII:

Director of Congressional and Public Affairs
Naval Sea Systems Command
Washington, DC 20362
(703) 602-1575

Plans of USN ships 1776 - ca. 1917:

Division of Military History
Smithsonian Institution
Washington, DC 20560
(202) 357-1781

Plans to USN small boats:

Book: Small Boats
Published periodically by BuShips and NAVSEA since about 1910.

Plans for USN small boats and coastal craft:

Naval Sea Combat Systems Engineering Stations
835 Philpotts Road
Norfolk, VA 23513

Plans of commercial ships:

Div. of Water Transportation
Smithsonian Institution
Washington, DC 20560
(202) 357-2025

II. RECORDS

U.S. National Archives
Military Records Branch
Washington, DC 20408
(202) 501-5385

III. PHOTOS AND PRINTS

1776 - CA. 1945:

Naval Historical Center
Photo History Archives
Washington, DC 20374
(202) 433-2765

U.S. Naval Academy Museum
Annapolis, MD 21402
(301) 267-2108

USN ships, 1945 - present:

Naval Imaging Command
Washington, DC 20362

Ships, yards, etc.:

National Archives
Photographic Archives Branch
Washington, DC 20408

Ships:

The Library of Congress
Washington, DC 20540

IV. HISTORICAL DATA

Histories of every ship until publication date:

Book: Dictionary of American Naval Fighting Ships. 8 vols. Published by Govt. Printing Office, 1959 - 1981.

Ships histories 1959 to present:

Naval Historical Center
Ship's History Branch
Washington Navy Yard
Washington, DC 20374
(202) 433-3643

All unclassified USN log books:

National Archives
Military Reference Branch
Washington, DC 20408
(202) 523-5385

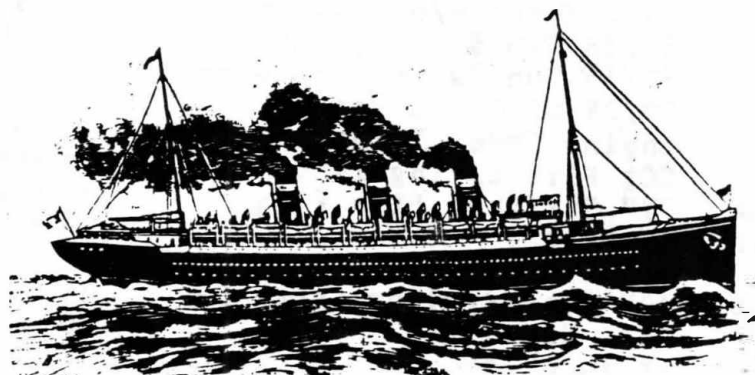
Some ship's logs to present, classified operational records:

Naval Historical Center
Operational Archives Branch
Washington Navy Yard
Washington, DC 20374
(202) 433-7230

IV. INTERLIBRARY LOAN

The Navy Library
Washington Navy Yard
Washington, DC 20374

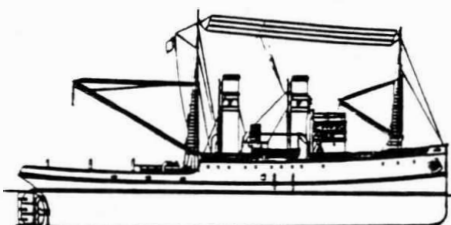
The Library of Congress
Washington, DC 20540



Using "Krazy Glue" THE HARD WAY:

Having used this product for several years, I've tried many techniques; all of which wasted glue, dried-up in specially-purchased applicator tips etc. While the product is certainly not expensive, the attentive frustrations can wear on a person.

Recently, I decided to try one of their "PENS" and discovered this was indeed a pleasure to use. Therefore the back of the package is reproduced here to explain the pens' features. This product is made by a number of different manufacturers i.e. Quicktite, Borden etc. Can be obtained in most drug or stationery stores. Give it a try.



HO SCALE details

WR 2504 10/2.50

3/4" Ø IRON PIPE (1.050" O.D.) —
.012" BRASS

DETAIL ASSOCIATES
BOX 187 MAPA
BAYTA 80454
SCS

HO PIPE CHART

PART NO.	PIPE NOMINAL SIZE HO"	PIPE OUTSIDE DIA. HO"	ACTUAL WIRE DIA.
WR 2501	1/8	.540	.006"
WR 2502	3/8	.675	.008"
WR 2503	1/2	.840	.010"
WR 2504	3/4	1.050	.012"
WR 2505	1	1.315	.015"
WR 2506	1 1/8	1.660	.019"
WR 2507	1 1/2	1.900	.022"
WR 2508	2	2.375	.028"
WR 2509	2 1/2	2.875	.033"
WR 2510	3	3.500	.040"
WR 2511	3 1/2	4.000	.046"
WR 2512	4	4.500	.052"

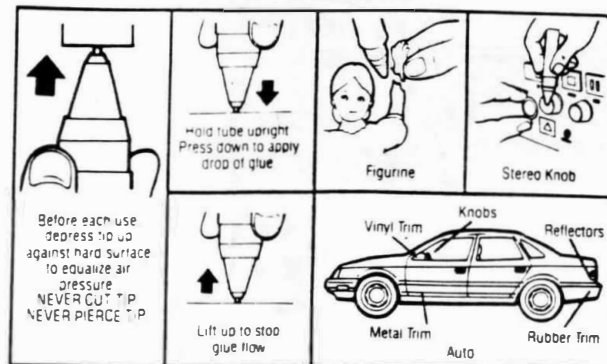
TIPS FOR MAKING LADDER HAND RAILS:

Making uniform hand rails to attach to ladders for 1/8" or 1/16" scale warship or merchant ship models has always been another frustrating experience for me, even using various self-made special jigs and tools. Brass wire sold in packages of ten foot-long lengths work superbly and can be obtained at model R/R shops. The label is included herein to show you the sizes available. My preference is .012" (WR 2504) which will pass nicely through BLUEJACKET'S photo-etched rail stanchions (3 hole) for the scales mentioned above. By taking hollow "round brass tube" of the next appropriate size, uniformity can be achieved by cutting off the appropriate/ desired length and rail height. The same sized brass tube can be used to make the right bends which must also not only be the same angle (90 to 120 degrees) but must remain exactly parallel to the ladder itself. Hope this explains; sorry I'm not an artist or I'd draw a picture.



The EXCLUSIVE packaging of KRAZY GLUE® PEN has these KRAZY KASE® features: 1) protection from accidental puncturing of the glue tube in pocket or purse. 2) a moisture absorbent (desiccant) tablet which gives KRAZY GLUE® longer storage life, and 3) shielding of glue from Ultra Violet rays.

TYPICAL USES



READ INSTRUCTIONS BEFORE USING

KRAZY GLUE® works miracles if used as directed for bonding solid materials. Not for use on wood, paper, leather, foam, polyethylene, rear view mirror, TEFLON® or other fluorocarbons. Damages porous ceramics on one side and apply glue to dry side. Do not out bonded products in oven or on stove. ASK FOR SPECIAL FORMULA "KRAZY GLUE® FOR WOOD & LEATHER" (KKG-821).

1. Remove tapered red protective cap. Protect table tops against accidental spills. Glue will stain or damage fabrics and furniture finishes.
2. Parts to be glued should be dry, clean and free of dirt, oil and soap. Parts must mate. KRAZY GLUE® will not fill gaps. Metals may have to be cleaned with a solvent, or scraped.
3. Before each use, point tip of pen up and depress against hard surface such as back of this card to equalize air pressure. NEVER CUT TIP. NEVER PIERCE TIP.
4. Apply a small drop of glue to only one side of the parts to be bonded by depressing tip gently. Control size of drop by depressing tip partially or completely. For larger drop, hold tube upright and depress against firm surface. Turn over and apply.
5. Join the parts and press together. No clamps are needed. Keep your fingers away from the glue so they will not stick.
6. Before replacing cap, wipe tip with cloth to help prevent clogging. To remove any hardened glue from tip, immerse momentarily in nail polish remover or acetone and wipe with cloth. NEVER USE FORCE TO REMOVE RED CAP. Store in cool dark place.

TEFLON® TM DU PONT

WARNING: EYE AND SKIN IRRITANT. BONDS SKIN INSTANTLY.

Contains cyanoacrylate. Avoid contact with skin and eyes. If eye or mouth contact occurs, hold eyelid or mouth open and rinse thoroughly but gently with water only for 15 minutes and GET MEDICAL ATTENTION. Liquid glue will sting eye temporarily. Solidified glue may irritate eye like a grain of sand and should be treated by an eye doctor. If skin bonding occurs, soak in nail polish remover or acetone and carefully peel or roll skin apart (do not pull). Avoid prolonged breathing of vapors. Use with adequate ventilation.

KEEP OUT OF REACH OF CHILDREN.

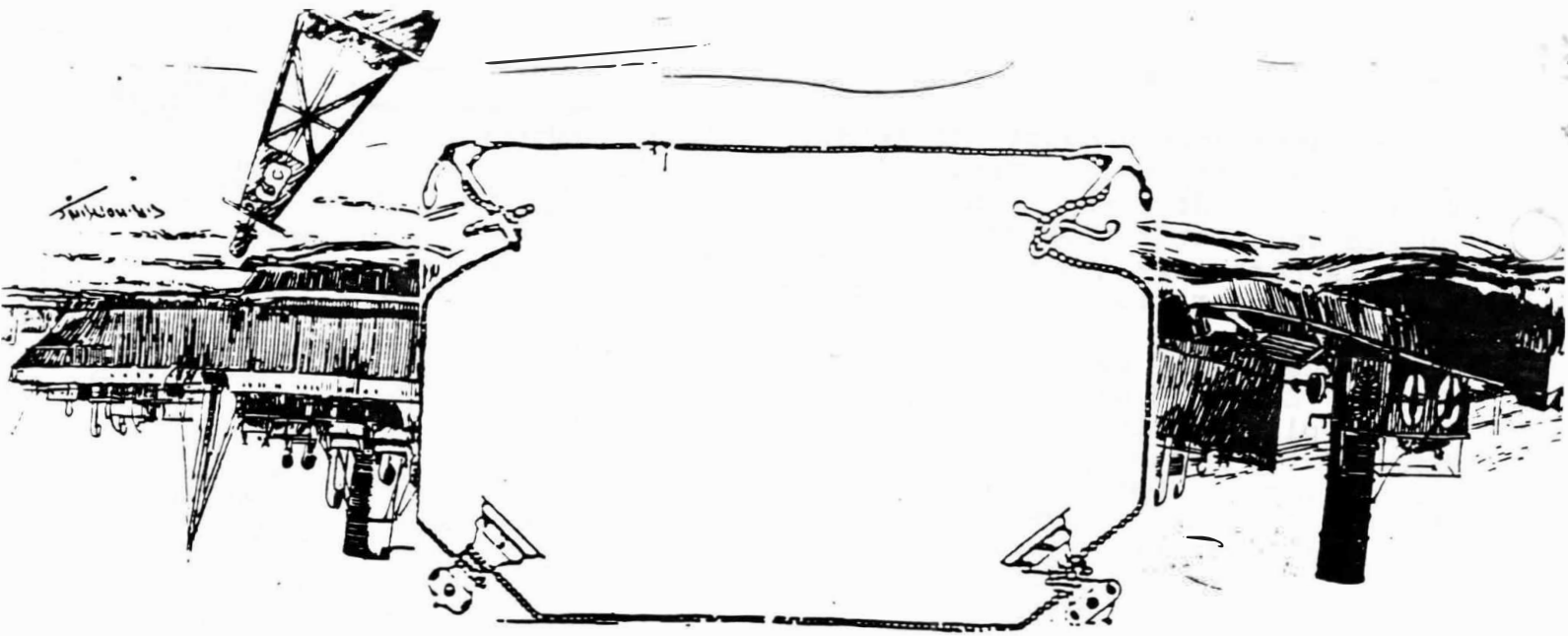


REORDER NO. KG-824

DIST. BY BORDEN INC., HPPG
COLUMBUS, OH 43215 USA

MADE IN JAPAN

1.55
MCRD
PXF
0925201
J15 64



San Diego Ship Modelers Guild
c/o Maritime Museum Assoc. of SD
1306 N. Harbor Dr.
San Diego, CA, 92101

San Diego Ship Modelers Guild Officers for 1994

Master
First Mate
Purser
Logkeeper/Secretary
Newsletter Editors

Steering Committee

Regatta Commodore

Jim Hawkins /redacted/
Doug McFarland /redacted/
Ed White /redacted/
Bob Cornell /redacted/
Fred Fraas /redacted/
Gordon Jones /redacted/
Bob Wright /redacted/
Ed White /redacted/
Bob O'Brien /redacted/
Jim Hawkins /redacted/

Schedule of Activities:

Meetings --Third Thursday of the month
7:00PM Social; 07:30PM Meeting

Static Workshops -- (discontinued)

R/C Operations --Saturday mornings at the
Model Yacht Pond. (Mission Bay)

Annual Regatta-- Third weekend in June

Membership:

Dues are \$15 annually
(\$7.50 after July 1st)

We strongly encourage
all to join the San Diego
Maritime Museum as expression
of appreciation for
the facilities they provide
for our benefit.