



# San Diego Ship Modelers Guild

1492 N. Harbor Drive San Diego, CA 92101

MARCH 2015

NEWSLETTER

VOLUME XXXXIII, NO. 3

## OFFICERS

### Guild Master

Mike Lonnecker  
address redacted

### First Mate

Bill Grolz

### Purser

Gary Seaton  
address redacted

### Editor

Chuck Seiler  
address redacted

### Log Keeper

Bob McPhail

## SPECIAL ASSISTANTS

### Webmeister

Barry Rishel  
address redacted

### Fair Coordinator

Bill Grolz  
address redacted

### Presentations Coordinator

Peter Jaquith  
address redacted

Established in 1972 by  
Bob Wright and Russ  
Merrill

## Minutes of the 11 February 2015 Guild Meeting

Guildmaster **Mike Lonnecker** opened the meeting at 1800 on board BERKLEY. There were 16 members present and one guest. Guest **Guy Lawrie** is retired and working on a model of a Skipjack. He plans to become a new member.

**Purser's Report:** The purser, **Gary Seaton**, was not present at the meeting, but later reported treasury balance as of 01 FEB 2015 was \$<redacted>. Everyone was reminded that DUES ARE DUE. If dues are not paid by the March meeting, loss of membership could result. It was also mentioned that the name tag for \$7.00 can be ordered with either a magnet or pin style.

## **DUES ARE DUE**

**Editor's Report:** **Chuck Seiler** had nothing to report. It was mentioned that the supply of Ship Modeling Info Sheets and Guild Applications at the model shop was very low and needed replenishment. Chuck said he would endeavour to correct the situation. **Mike Lonnecker** also asked the Guild by-laws be published in the next edition of the newsletter.

Newsletter contributors are reminded to have inputs to Chuck at least two weeks prior to the next meeting.

**Museum Report:** It was reported that **Dr. Sheehan** is in the process of cleaning up the model shop. **Joe Bompensiero** has not been very active lately and his work area is now available for other modelers. His tools and materials have been consolidated in one area and appropriately marked. **Dr. Sheehan** has asked that they not be disturbed.

It was discussed that when working in the model shop, the door should remain closed to keep visitors from coming in. This prevents them from

Continued on Page 2



San Diego Ship Modelers' Guild is affiliated with and supports the Maritime  
Museum of San Diego

<http://sdshipmodelersguild.org/>

## MINUTES-Continued

running afoul of models and potentially dangerous power tools/sharp objects. The top half of the door and the slide window can remain open; this is encouraged to enhance visitor interaction, particularly in the area in front of the window now being available. When working in this space, ensure you clean up when done so the next modeler can use the space as well.

It was mentioned that the “working” scroll saw belongs to **Bob Duncan** and the Museum scroll saw is broken.

Members are reminded that they leave items in the shop at their own risk. Sadly, we have had thefts from the space.

When restoration projects are accepted by modelers, and this work will take place on museum property, it is recommended that the modeler initiate a restoration contract with the person to ensure there is no ambiguity as to the work being done. **Dr. Sheehan** has copies of the contract available and would place some in the model shop. To be clear, modelers who accept commissions to restore models do so as individuals, not as representatives of the Museum or the Guild.

The SAN SALVADOR launch date is now tentatively scheduled for some time in April. More to follow as it becomes available.

**Webmaster Report:** **Barry Rishel** reported that pictures have been uploaded along with the most recent newsletter. He is presently working on a counter to count visitors to the web site.

**Community Build:** **Mike Lonnecker** would like to temporarily suspend meetings. No model has been agreed on for construction, although several

suggestions were considered. **Howard Griffus** stated that he has a large scale kit of ENDEAVOR that he would donate for a group construction project. Another idea is to ask the museum if they have a ship model that they would like to have constructed. TBD

## OLD BUSINESS

-The San Diego County Fair will be held June 6 through July 5. The Sign Up Sheet for volunteering in the booth was made available. There are still some spots needed to be filled. (See page 13) If you would like to volunteer please contact Bill Grolz. The museum will again sponsor the competition for best wood ship model. The model can be from a kit or scratch built. It was requested that everyone save any catalogs received that they no longer need so that they can be collected and used as handouts at the fair.

## NEW BUSINESS

-Nomination of Guild officers was held.

Nominations include:

- +Guild master: Mike Lonnecker
- +First Mate: Lee Greene
- +Purser: Gary Seaton and Howard Griffus
- +Logkeeper: Bob McPhail
- +Newsletter Editor: Chuck Seiler.

If you would like to be nominated for one of these positions please indicate your desire at the March meeting. Final voting will be held at that time.

-Pete Jacquith has been appointed to be the program director for meetings. He will manage show & tell; model displays; demonstrations; etc. An Audio/Visual system is available and WIFI is available also.

### THE NAUTICAL RESEARCH GUILD

“ADVANCING SHIP MODELING THROUGH RESEARCH”

Annual membership includes our world-renowned quarterly magazine, Nautical Research Journal, which features photographs and articles on ship model building, naval architecture, merchant and naval ship construction, maritime trade, nautical and maritime history, nautical archaeology and maritime art.

Other benefits include discounts on annual conferences, ship modeling seminars, NRG products and juried model competitions which are offered exclusively to Guild members. We hope you will consider joining our ongoing celebration of model ships and maritime history.

**YEARLY MEMBERSHIP**  
\$48.00 USA  
\$60.00 Foreign



For more information contact us at [www.thenauticalresearchguild.org](http://www.thenauticalresearchguild.org)

# SHOW AND TELL

HMS Janus 44 guns. By Robert Hewitt  
Scratch built 1 inch= 40 feet (1:480)

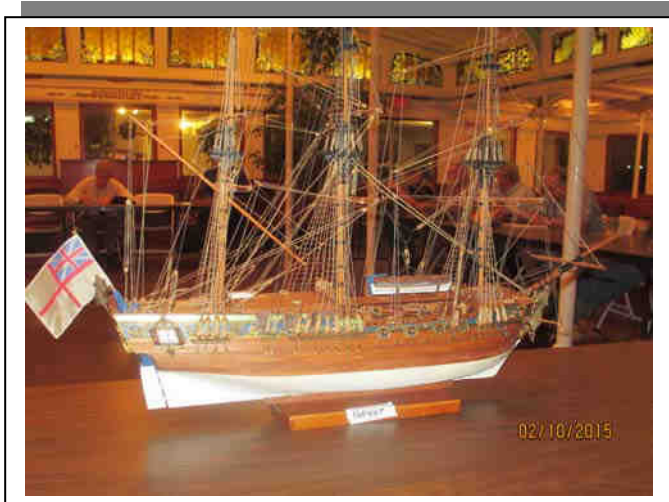


The deck furniture is complete except for the waist railings. They will be installed after the model is in its cradle. Mounting the model on the cradle calls for a slight amount of pressure to hold it firm while the glue sets. The waist is the best place to apply that pressure. The cradle is carved from .09 thick pear wood. .04 diameter dowels hold the cradle to the mahogany pith and will also hold the ship to the cradle. The dowels holding the ship to the cradle will be holly for contrast to the pear wood. The pith is lined in ebony. The pith will be attached to the base nested in a picture frame.



The gun port lids are finished and glued to the gun ports. The picture with the penny shows the process to make miniature lids. The two sizes of lids are holly wood cut into

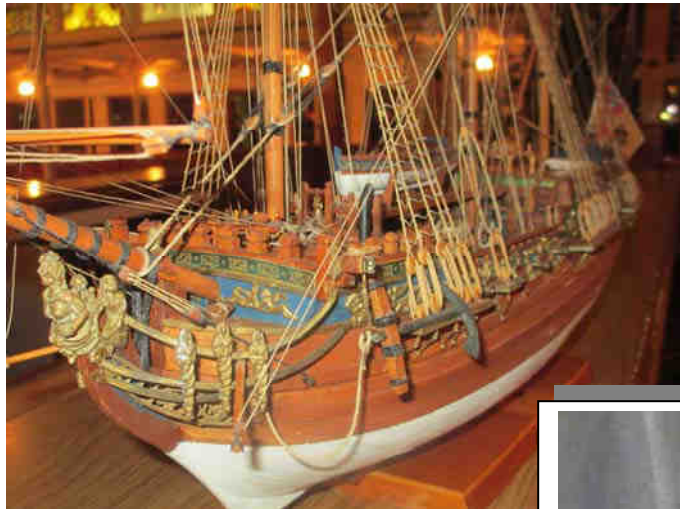
strips about one-half inch long. The strips are bent about 45 degrees on a block of wood using a fine-tip soldering iron. A sheet of .005 thick pear wood is glued to a 2" x 2" x 1/8" piece of scrap wood. Rectangles are cut into the pear wood; two sizes to fit over the lid representing the portion of the lid that fits into the gun port lip. After gluing in place each lid is painted black on the outside and red on the inside. They are then trimmed to length and glued to the roof of the gun port.



Jon Sanford presented the yacht ROYAL CAROLINE. This is one of the many museum models Jon and other 'refurbishers' are working on, bringing back to their glory days



## SHOW AND TELL-Continued



← ROYAL CAROLINE

Pete Jaquith's FAIR AMERICAN (below)  
and Bulwark and Deck at Side Mockup  
(below left)



Isaac Wills' USS ARIZONA

Significant progress has  
been made since last  
month



## SHOW AND TELL-Continued



ARIZONA aft mast and fantail



ARIZONA superstructure



Don Dressel's HMS HALIFAX. Significant progress has been made since last month. Carved figurehead is in place



Catheads, caprails and posts installed. The windlass was made from a Chuck Passaro kit.



Don's plexiglass carrying case. Don plans to use this to carry the model to Japan in April when he attends the ROPE 40th Exhibition.



Deck furniture aft. The rudder turns and the pumps are functional.

# TRAFALGAR PROJECT.

Revisited

by Chuck Seiler

On 21 October 1805, the British fleet under Vice Admiral Horatio Nelson engaged a combined French and Spanish fleet off Cape Trafalgar. By the end of the day Nelson was dead and the French/Spanish fleet was in a shambles. Many of the British ships were in bad shape as well, but none had surrendered and the British had won a tremendous victory; one of the most notable victories in naval history.

On 21 October 2005, the Maritime Museum of San Diego unveiled its "Trafalgar Diorama" in honor of the battle fought two hundred years before.

I wanted to take this opportunity to revisit the project on the tenth anniversary of its start. It is my intent to shed some light on a collaborative project between the Museum and Guild that many members may not be aware of. Some of you may have seen the diorama but do not know the history behind it. This will provide some insight behind the scene by having folks who worked on the project give their thoughts and provide details of the project itself.

This was a Guild project carried out at the request of and in conjunction with the Museum. Since the Museum had recently acquired the HMS SURPRISE, a reproduction of a Napoleonic era British frigate, **Dr. Ray Ashley** wanted to highlight it AND celebrate the 200th anniversary of the Battle of Trafalgar by building a diorama of the battle. Looking back, this was no small challenge.

The project was headed up by **Bob Crawford**, Curator of Models at the time and Guild member (still a member). The project was announced in January 2005. A call went out for volunteers at the February Guild meeting. The first planning meeting was held on 05 March...7 months before unveiling.

At the March meeting it was determined that we would use 1/1200 scale GHQ Napoleonic sailing ship models to represent all 60 ships of the line involved in the battle (27 British/33 French/Spanish).

## TRAFALGAR PROJECT FUN FACT

At the time, GHQ did not make 64 gun ships of the line and even the smallest 76 was too big. There were four at TRAFALGAR. Spanish SAN LEANDRO, British AGAMEMNON, AFRICA and POLYPHEMUS. We had to use 44 gun CONSTITUTION models and add a lower balsa wood (yes balsa) gun decks.

Building the models was one task. The volunteers were divided into three teams one each to build the British, French and Spanish ships. Later, there would be some collaboration in the build, but at first each team stuck to its own ships.

The second major task was to recreate 'the scene'. How would the ships be displayed? What did the fleets look like? To accomplish this successfully, the group had to be not only model builders, but also researchers. Future revisitations of the project will highlight how this was done and share thoughts/insights from many of the participants.

*TO BE CONTINUED*







# ANNOUNCEMENTS



## RICHARD STRANGE MEMORIAL

Celebrate the life of former Guild member **Richard Strange** on Sunday March 15, 2015 at 10 AM at Maritime Museum of San Diego, onboard the ferry **BERKELEY**. San Diego California. Contact **Chuck Seiler** if you are interested in attending.

## COMMUNITY BUILD GROUP

When started, the Community Build Group was organized to have all build the same model and thus share build ideas, techniques and collectively solve problems. The group was highly successful with the building of 10 models. So successful that the idea and model used was copied by several clubs nationwide. (Writers note: The idea was stolen from the Ship Modelers Association of Fullerton.) With the completion of the project the group was kept going with the presentation of demos and techniques that could not be presented at the Guild meetings because of items used or techniques that were inappropriate for use on the **BERKELEY**. At this time we have not been able to agree on a new project and we have run out of ideas for demos. As a result at the last meeting I elected to suspend activities until we could come up with a new project.

**Howard Griffus**, at the last meeting, volunteered to bring in a model kit that he thought would be appropriate for the group to build, in a manner similar to the way the **USS SAN DIEGO** was constructed for the museum. Howard will bring the kit to the next meeting so all may view it. If this interests you, be sure and be at the next meeting. A sign-up sheet will be passed around and with sufficient interest the group will start again.

Mike Lonnecker

**DUES-** Dues are due in January. Annual dues are \$20. Failure to pay dues by March may result in being dropped from the rolls.

## GUILD BY-LAWS

Attached are the current San Diego Ship Modelers Guild by-laws (pages 9 and 10). These will have to be amended due to the recent change in meeting days. Take the opportunity to review these and be ready to propose any new amendments you see fit. **Mike Lonnecker** will provide more detail.

## San Diego Ship Modelers Guild Presentation Program

A SDSMG Presentation Program has been established with the objective of providing interesting meeting content and while passing on many of our many ship modeling experiences to present and future guild members. Presentations may include slide shows, picture files, internet presentations, and physical demonstrations of past/current ship model builds, ship modeling techniques, visits to marine events, etc. With broad membership participation, we hope to have one or possibly two 15/20 minute presentations per month. The program schedule for the spring of 2015 includes:

- March `15 – presentation on NRG's Model Ship World's website and resource center by **Chuck Seiler**
- April `15 – presentation on his recent visit to the Maritime Museum of Astoria, Oregon by **Bill Grolz**
- May `15 – guild auction of surplus club and personal kits/tools/supplies

If you have a subject of interest to fellow guild members, please contact me at the e-mail address noted below. Please include your presentation title, a short description, and computer and audio visual support requirements.

Pete Jaquith  
Program Chairman  
<redacted>

---

## BALLOT

### ELECTIONS

Elections for 2015 Guild officers will be held at the March meeting. If you will not be able to attend the meeting but would still like to vote, email **Mike Lonnecker AND Chuck Seiler** (semi independent board of elections) at their email addresses on front of newsletter. Snailmailians can call.

**GUILDMASTER:** ☐ Mike Lonnecker      ☐ Vladimir Putin      ☐ \_\_\_\_\_  
**FIRST MATE:**      ☐ Lee Greene      ☐ \_\_\_\_\_  
**PURSER:**      ☐ Gary Seaton      ☐ Howard Griffus      ☐ \_\_\_\_\_  
**NEWSLETTER EDITOR:** ☐ Chuck Seiler      ☐ \_\_\_\_\_  
**LOGKEEPER:**      ☐ Bob McPhail      ☐ \_\_\_\_\_



**Amended and Restated Bylaws  
Of The  
San Diego Ship Modelers Guild**

**1 January 2004**

Article I  
Name and Purpose

1.1 Title. This organization shall be known as the San Diego Ship Modelers Guild.

1.2 Purpose. The Guild is an association of craftsmen that share a common interest in ship modeling and the related interests of ship construction, maritime history and lore of the sea.

1.3 Logo. The logo of the Guild shall be a bow oblique view of the steam yacht Medea within a ships helm emblazoned with the title "San Diego Ship Modelers Guild".

Article II  
Membership

2.1 Qualification. Membership shall be open to any person without regard to sex, age, color, race, creed or national origin.

2.2 Admission. A member shall be admitted upon payment of the current dues and fees.

2.3 Dues. Annual dues are payable on 1 January. Persons joining after 1 July will be charged half of the current annual dues.

2.4 Adjustments. If the officers of the Guild determine that an adjustment in the dues or fees is necessary, the membership will be informed at least 60 days prior to implementation.

2.5 Initiation Fees. These fees may be imposed on new members to cover one-time expenses, such as the cost of a nametag.

2.6 Life Members. Any member of the Guild, in good standing, may nominate another member, in good standing, for Life Membership. Nomination should be based on significant, long-term contributions to the Guild. A majority vote of the membership, in attendance, is necessary to grant Life Membership.

Article III  
Officers

3.1 Officers. Guild officers shall consist of Guild Master, First Mate, Purser, Newsletter Editor and Log Keeper.

3.2 Duties. The duties of the officers are, but not necessarily limited to the following:

(a) Guild Master: Presides over the general meeting, co-ordinates the activities of the Guild and acts as the official spokesperson for the Guild.

(b) First Mate: Performs the duties of the Master in his or her absence.

(c) Purser: Collects, records and distributes funds. The Purser prepares an annual budget for review by the officers. Expenditures of more than \$100.00 for non-budgeted items must be approved by and signed off by at least one other Guild officer.

(d) Newsletter Editor: Compiles newsworthy stories, publishes, and distributes a newsletter approximately one week prior to each general meeting. Maintains correspondence with other clubs with similar interests.

(e) Log Keeper: Keeps minutes at the general meeting and forwards a report to the newsletter editor.

3.2 Terms of Office. Officers shall serve a term of one calendar year. There will be no restrictions on the number of terms served.

3.3 Election of Officers. The Guild Master shall notify members one meeting (January) in advance of the nominating meeting and the Master shall appoint a nominating committee whose task is to assure that there be two nominees for Master (mandatory) and as many other offices as possible. Additional nominations may be made from the floor or by mail at the February meeting. Prior to the election meeting, ballots with the names of the nominees shall be mailed to all paid up members. The election will be held at the March meeting, tabulating carry-in and mail-in ballots. Proxy votes are not permitted. The elected slate of officers will take office that evening.

3.4 Vacated Office. In the event that the Master is unable to serve, the First Mate shall succeed the office. Un-expired terms of other officers or committee chairs shall be filled by a majority vote of the membership present.

3.5 Steering Committee. The Guild Master shall call a meeting of the Steering Committee as required to discuss urgent business pertinent to the Guild. The Steering Committee shall be made up of the above-mentioned officers, committee chairpersons, and any other San Diego Ship Modelers Guild member who wishes to attend. The Guild Master will report on the conclusions of the Steering Committee at the next regular membership meeting.

#### Article IV Meetings and Organization

4.1 Meetings. The general meetings shall be conducted on an informal basis. The Guild Master may modify the agenda for any meeting, however, it should include, as a minimum, introduction of guests, a financial report and a show and tell/trouble shooting session. The Guild Master shall act as moderator, encouraging participation.

4.2 Meeting Time. The meetings will normally be held aboard the 1898 steam ferry *Berkeley* commencing at 7:00 p.m. on the second Wednesday of each month. A social period of approximately 30 Minutes normally precedes the meeting. If the *Berkeley* is unavailable, the meeting will mostly be held on the 1863 Bark *Star of India*.

4.3 Subscriptions. As part of our original charter with the Maritime Museum Association of San Diego, the Guild shall maintain a membership in the Nautical Research Guild. In addition, subscriptions to other modeling magazines may be considered if funds are available in the current budget. Magazines are maintained in the Guild library in the model shop aboard the *Berkeley*.

#### Article V Amendments

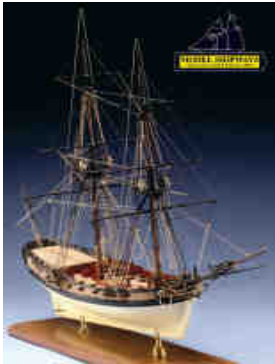
5.1 Amendment Procedure. The Bylaws may be amended as follows: First, read the proposed change at a regular meeting and receive approval from the majority of those members present. Second, publish the proposal in the next newsletter, along with a ballot, which must be returned to the log keeper before or during the next meeting. Third, receive approval from two-thirds majority of the membership.

5.2 Distribution. The approved amendment shall be distributed to the entire membership, including life members.

# Building the 14 Gun Brig *Fair American*, circa 1780

By Peter Jaquith

As a break from my Brigantine *Newsboy* of 1854 project, I have started construction of the 14 Gun Brig *Fair American*, circa 1780. The following notes address my progress and experience on this build:



**History** – The 14 Gun Brig *Fair American*, circa 1780 is based on Model No. 60 of the Henry Huddleston Rodgers ship model collection at the U.S. Naval Academy Museum, Annapolis, Maryland. Due to the number of vessels named *Fair American* that participated in the American Revolution and the amount of conflicting data pertaining to these names, it has not been possible to identify the specific vessel the model represents. The brig *Fair American* had a length of 68' 0", beam of 24' 0", depth of 8' 0", and tonnage of 130 tons.

**Model** – The model is based on the Model Shipways *Fair American* kit 1<sup>st</sup> developed by Erik A. Ronnberg, Jr. and updated by Ben Lankford. Additional research was conducted using Steel's Elements of Mastmaking, Sailmaking, and Rigging (1794) and by examining the original *Fair American* model at the U.S. Naval Academy. The model is plank on bulkhead construction at 1/4" to the foot scale (1:48) with single planking and scratch built details/fittings. Paint colors will be based on the original Model No. 60 and contemporary practice.

**Planned Enhancements** – Planned enhancements to the Model Shipways kit include: main deck planking will incorporate hooked scarfs outboard; cannons/carriages will be from the Lumberyard; the stern lantern will be from Caldercraft Scale Ship Models; proportional linen rigging line will be from Bluejacket Ship Crafters and Warner Woods West; and, rigging blocks will be from Warner Woods West.



**Bulwark and Deck at Side Mockup** – In order to more fully evaluate these changes, cannon port clearances, bulwark and upper hull plank straking; a Bulwark and Deck at Side mockup was constructed. Lessons learned from this study addressed: main deck planking; cannon port size & location; waterway & deck scupper design; bulwark & upper hull planking; channels & chain plate design; cannons & carriages; cannon rigging; and painting & masking supplies.



**Hull Filler Blocks** – To assist in hull fairing and to provide additional support to hull planking in heavily shaped areas, filler blocks were added between bulkheads 1-4 and 11-16. The filler blocks were fabricated from 3/8" x 1" and 1/2" x 1" basswood; and they were a real help in fairing the bow and stern portions of the hull. I would recommend that other modelers consider this addition to normal POB hull construction.



**Main Deck Planking** – For the main deck I tapered the outer deck planks at the fore and aft ends and used hooked scarfs to notch the outer planks into the adjacent planks. Before fitting the planking, I developed a layout drawing of the arrangement. Although the curved planking was more difficult than parallel planks, it is representative of late 1700's practice before the introduction of circular saws for cutting planks.



**Transom Planking** – The transom was one of the more difficult parts of this project. In order to reflect prototype practice I chose to curve the planks downward following the lower curve of the transom. The planks were cut from 1/32" sheet stock with plank width selected to suit the windows. To complete the picture, the Britannia window castings were skewed to fit the planking arrangement.



## BUILDING FAIR AMERICAN-Continued



**Bulwark Framing** – I built up the bulwark timberheads and added a 3/32” sq. sub-cap rail in order to accommodate the required cannon port size and location (on an armed ship model, it is best to check your cannon size before completing bulwark construction). Bulwark construction also included filler pieces for the bulwark sheaves, fairlead and hawse holes.

**Bulwark Planking** – Bulwark ceiling and exterior bulwark planking was installed in the normal manner. In the process of fitting bulwark planking, inserts for the bulwark sheaves were incorporated.



**Transom Cap Rail, Fashion Pieces, Black Strake, and Wales** – After soaking in warm water, the transom cap rail was formed using a male and female forming jig. Extra width was provided on the formed piece to trim the cap rail to the run of the transom. Fashion pieces were fabricated to suit, and the black strake and main wales installed in the normal manner.



**Main and Fancy Rails** – After painting the bulwark interiors, the main cap rail and pin rails were installed. This step was followed by installation of the fancy rails, quarter deck beams, and quarter deck bulkhead framing.



**Quarter Deck Bulkhead** – The quarterdeck bulkhead was redesigned to represent (6) portable panels and two doors based on contemporary shipbuilding practice (this to allow the bulkhead to be quickly removed when the ship was cleared for action). The bulkhead assemblies were fabricated off the ship model using 1/64” aircraft plywood as a backing.



**Quarter Deck Planking** – Quarter deck planking consisted of (19) tapered and curved deck planks. After preparing a drawing of the planking layout, the planks were cut from sheet stock using a ship's curve as a guide.



**Hull Planking Layout** – The lower hull planking layout consists of (16) plank strakes per side with an amidships width of ~9” plus the garboard and 1<sup>st</sup> broad strakes. The hull surface has been divided into four planking belts based on the guidelines in the book “Planking the Built-Up Ship Model” by Jim Roberts available from Model-Expo.

When complete the *Fair American*, circa 1780 makes a beautiful model. With the hull structure, decks, transom, bulwarks, and upper hull planking complete I have found this project to be both interesting and somewhat challenging. As an interesting ship model, I would recommend this kit to experienced modelers as the kit does have some difficult areas (drawings not to scale and inaccurate laser cut bulkheads).

# Fair Sign-up Sheet - 2015

Booth Hours: M-F 1100 - 1800 -- Weekend: 1000 - 1800

Fair set up Sunday May 17 2015 - 0900

Fair take down Monday July 6 2015 - 0900

Fair set up

1. Grolz
2. Hewitt
3. JAY Mac MASTER
- 4.
- 5.

Fair take down

1. Grolz
2. Hewitt
3. BILL NORRIS
- 4.
- 5.

Sunday June 7	Monday June 8	Tuesday June 9	Wednesday June 10	Thursday June 11	Friday June 12	Saturday June 13
1. Grolz	Exhibits Closed	Exhibits Closed	1. Grolz	1. Hewitt	1. McPhail	1. BRIAN DAVIES
2. JAY Mac MASTER			2. Hewitt	2. Sanford	2. Hewitt	2. HEWITT
3.			3. Sanford	3.	3.	3.
Sunday June 14	Monday June 15	Tuesday June 16	Wednesday June 17	Thursday June 18	Friday June 19	Saturday June 20
1. Sanford	Exhibits Closed	Exhibits Closed	1. Grolz	1. Grolz	1. McPhail	1. Seiler
2. JAY Mac MASTER			2.	2. Sanford	2. BILL NORRIS	2. BRIAN DAVIES
3.			3.	3. DAVE DANA	3.	3. BILL NORRIS
Sunday June 21	Monday June 22	Tuesday June 23	Wednesday June 24	Thursday June 25	Friday June 26	Saturday June 27
1. Seiler	Exhibits Closed	1. Sanford	1. Grolz	1. Grolz	1. McPhail	1. BRIAN DAVIES
2.		2. BILL NORRIS	2.	2. DAVE DANA	2.	2. BILL NORRIS
3.		3.	3.	3.	3.	3.
Sunday June 28	Monday June 29	Tuesday June 30	Wednesday July 1	Thursday July 2	Friday July 3	Saturday July 4
1. ROBERT WILLS	Exhibits Closed	1. Hewitt	1. Grolz	1. Hewitt	1. Hewitt	1. Seiler
2. ISAAC WILLS		2.	2. Hewitt	2. Sanford	2.	2. BRIAN DAVIES
3. Grolz		1.	3.	3.	3.	3.

Sunday July 5

1. Grolz
2.
3.

VOLUNTEERS ARE NEEDED TO FILL THE EMPTY SLOTS. CONTACT BILL GROLZ OR CHUCK  
SEILER BEFORE THE NEXT MEETING IF YOU WANT TO VOLUNTEER



# FROM THE HELM

Our most important piece of business this month is elections. At the present we only have one contested position. Please consider carefully who you want to manage your club. If you or someone you think should be a part of the management team nominate yourself or them. I believe a lot of people are willing to help but just won't volunteer. Give them a push and volunteer them. The worst that can happen is they say no. The best is we get more people involved. Wouldn't it be great to have every position contested?

I want to thank all those who have donated their time and efforts in helping run our club. Also thanks to those that have stepped up and accepted nominations for office for the coming year.

Our efforts to enhance and expand our meetings are moving forward. Pete has lined up some interesting programs already with many more to follow. These will prove interesting to all and in most cases be quite educational. The basic premise here is the sharing of information. All of us have moments in our modeling where we stop step back and say to ourselves "Wow, look what I did". These are the kinds of things that should be shared with the group.

The presentation doesn't have to be formal, though it can be. Just show what you did and say a few words about how you did it. If you can illustrate it with a couple of sketches in a hand out, so much the better. Contact Pete and let him know you have something to share. If needed, who knows he might even help you put it together.

Come out and vote and bring a model for show and tell. See everyone at the next meeting.

*Mike Lonnecker*

Mike Lonnecker  
Guild Master

## TRAFALGAR PROJECT FUN FACT

Each ship is flying an historically correct ensign. Give that the ships are only 2 to 2 1/2 inches long, this is pretty amazing. I can top that. HMS VICTORY is flying the same signal it flew as it broke the French/Spanish line. No, not the famous "ENGLAND EXPECTS..." it is "ENGAGE THE ENEMY MORE CLOSELY".



<http://sdshipmodelersguild.org/>

Next meeting is  
**TUESDAY**  
**10 MARCH 2015**  
**5:30 PM- Social. 6:00PM Meeting**  
*Bring a model*

Ides of March

S	M	T	W	T	F	S
1	2	3	4	5	6	7
8	9	10	11	12	13	14
15	16	17	18	19	20	21
22	23	24	25	26	27	28
29	30	31				

MARCH 2015

-FINIS-