



AUGUST 2025 32°43'N 117°10'W Vol LIII, No 8

GUILD OFFICERS

[Steve Miller](#)

Guild Master

[Steve Scheet](#)

First Mate

[John Walsh](#)

Purser

[Karl Zingheim](#)

Log Keeper

[Alex Roel](#)

Newsletter Editor

COMMITTEE CHAIRS

[John Walsh](#)

Web Master

[Chris Sullivan](#)

Photographer

[John Walsh](#)

Presentations

[Jon Sanford](#)

Model Shop

[Isaac Wills](#)

Youth Coordinator

[Steve Scheet](#)

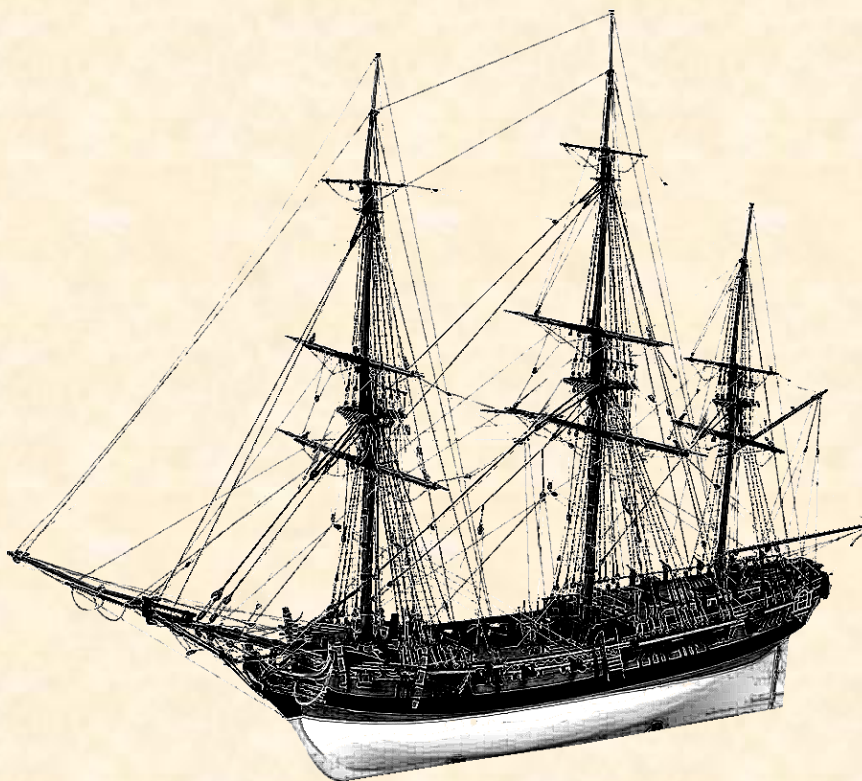
Fair Coordinator

[John Walsh](#)

Community Build

Goodbye, FLY

Mike Lonnecker's nine-part series *Tales of the FLY: A Study* comes to a close this month. Not exactly a build log, through *Tales* Mike has shared with us some up-close looks at how he approaches and solves both simple and complex model shipcrafting situations while scratch-building.



If you've missed any of this fascinating series you can find the first installment in our [July 2024](#) issue.

Many thanks to Mike for a job well done.

Alex



MMSD Supporter

San Diego Ship Modelers Guild
1492 North Harbor Drive, San Diego CA, USA 92101
sdshipmodelersguild.org

founded 1971 by Bob Wright and Russ Merrill



NRG Chapter Club

When I really started making progress on the hull of the PRINCE DE NEUFCHATEL I was ecstatic. Things couldn't have started worse, but with patience and some research the wood finally came together and the finishes just "worked out" (thanks Chuck!) Dare I say I started to consider myself at least a competent shipwright?

But after finishing and fitting out your hull you put away your sanding blocks, your trusted wood glue and your beautiful paints and varnishes. You have come to the spars and rigging.

And from my perspective, now you face the Kraken (lines, blocks, footropes and *gasp* ratlines!!)

As a first time builder, rigging has knocked me down a few pegs. Left me at the end of my rope, so to speak. I felt reasonably accomplished after finishing my woodwork. But rigging – where to begin?

No, really: I'm asking here.

Well, the NRG's [Model Ship World](#) forum is a good starting point. The topic "Masting, Rigging and Sails" has so much information available and the cost is simply the time you invest.

There are many good books out there. [The Ashley Book of Knots](#) chapter on "Marlinspike Seamanship". Darcy Lever's [The Young Sea Officer's Sheet Anchor](#). [The Global Schooner](#) by Karl Heinz Marquardt and [Seamanship in the Age of Sail](#) by John Harland. These books have helped me immensely – I am a strong advocate of building yourself a reliable library.

But translating real world rigging applications into the scale model realm is where the magic of our art truly happens. While I could strap a block at 1/58 scale exactly as Mr. Lever describes in his book using the "short splice", at this size I choose not (knot?) to replicate a strap by weaving – an overhand knot, superglue,



and some precise trimming scissors are my friends.

In This Issue

- ☑ [Goodbye, FLY](#)
- ⚓ [From the Quarterdeck](#)
- 🎀 [Ribbons!](#)
- ⚓ [A Sea Shanty](#)
- 🔔 [Last Meeting](#)
- 🔔 [Show and Tell](#)
- ⚓ [Flotsam and Jetsam](#)
- ⚓ [Roll Call](#)
- 🚢 [Tales of the FLY: A Study](#)
- ⚓ [Captain's Bookshelf](#)
- ⚓ [Home Port](#)
- ⚓ [The Bitter End](#)

I will be sorting this out for a while. Natural or synthetic line? Super glue or white glue? Aftermarket blocks? 3D-Printed or wood? If you choose the kit wood blocks, can anything be done to make them more realistic?

If you're stuck, come to a meeting and ask some questions. I do. Folks are always willing to help and I know there is a lot of experience and thoughts on the subject.

As a Guild, we have some true magicians in house with scale line.

Will you teach us the ropes?






Ribbons! *Who won what at the 2025 San Diego County Fair*



For the 33rd consecutive year the Guild participated in the San Diego County Fair and took home ribbons, awards, and cash prizes bestowed by the Maritime Museum of San Diego and the SDCF *Design in Wood* competition. Congratulations to the winners, to all entrants, and many thanks to our volunteers.

**42nd Annual
DESIGN IN WOOD**
An Exhibition of Fine Woodworking



2025 Best of Show
Brian Condran - Quince Cabinet

Coordinator: *Jim Strawn* Asst. Coordinator: *Joe Sobkowick*
Presented in association with the San Diego Fine Woodworkers Association

SAN DIEGO COUNTY FAIR SUMMER PET-TACULAR 2025
JUNE 11-JULY 6 • SDFAIR.COM

2025 SAN DIEGO COUNTY FAIR
AG & ED ARTS COMPETITIVE ACCESS PASS
VALID FOR ONE FREE
SINGLE DAY ADMISSION
JUNE 11 - JULY 6, 2025
CLOSED MONDAYS & TUESDAYS
WWW.SDFAIR.COM




ALL AGES | NO RESERVATION REQUIRED | VOID WHEN SCANNED
NOT FOR RESALE ANY UNAUTHORIZED DISTRIBUTION IS STRICTLY PROHIBITED

SAN DIEGO COUNTY FAIR SUMMER PET-TACULAR 2025
000716

2025 SAN DIEGO COUNTY FAIR
JUNE 11 - JULY 6
(CLOSED MONDAYS & TUESDAYS)
WWW.SDFAIR.COM

AG & EDUCATION
SINGLE DAY GREEN LOT OR
OVERFLOW INTO THE TRAINING TRACK

NAME: _____
DATE: _____
WWW.SDFAIR.COM



photos by Steve Scheet

From left
Art Arroyo and Jay MacMaster go aloft on set-up day; the booth awaits the coming storm.



MISS WEBBITA

Steve Scheet / MISS WEBBITA / Model Building – Scale

Steve Scheet completed a Triple Crown of sorts by being 1) a first-year Fair Coordinator and taking home both 2) the MMSD's Best Scale Model Ship Award and 3) the SDCF's DIW Blue Ribbon for his Chris-Craft Commuter MISS WEBBITA. The finished model is 38" long with a 9 $\frac{3}{4}$ " beam. This bashed Dumas kit features mahogany trim and a teak deck. Steve also added remote control features to this 1"=1' (1:12) scale beauty.



Mike Lonnecker / PINNACE / Model Building – Scale

The Red Ribbon for 2nd Place was awarded to Mike Lonnecker for his PINNACE. This scratch-build displayed in the Admiralty style (note the shadow) was built with boxwood, holly, maple and cherry at a scale of 1/4"=1' (1:48) and represents a type of ship's boat commonly found in the 18th century Royal Navy.

Doug Ward / MAYFLOWER / Model Building – Scale

Featuring basswood, spruce, and walnut, Doug Ward's 5/32"≈1' (1:76) scale build of MAYFLOWER took the 3rd Place White Ribbon. Doug's wife is a member of [The Mayflower Society](http://TheMayflowerSociety.org).





Tom Hairston / PILOT BOAT / Model Building – Scale

Tom Hairston has nearly completed MMSD's fleet with his latest scratch build, PILOT BOAT. This basswood build (in a poplar case) crafted at 1/4"≈1' (1:52) scale captured 4th Place Yellow Ribbon in this year's fair. Tom reports that the next MMSD fleet scratch-build is the Block Island schooner SCRIMSHAW.

Phil Pizzuto / CONSTITUTION / Model Building – Scale



First-time entrant Phil Pizzuto made his fair debut with a fully rigged CONSTITUTION, a Mamoli plank-on-frame build in 1/8"≈1' (1:93) scale. This is Phil's first-ever attempt of a wooden ship build.





SAN DIEGO SHIP MODELERS GUILD

2025 SAN DIEGO COUNTY FAIR VOLUNTEER FORM

BOOTH OPEN 11 AM - 6 PM
PLEASE ARRIVE 15 MINUTES EARLY

SUNDAY	MONDAY	TUESDAY	WEDNESDAY	THURSDAY	FRIDAY	SATURDAY
--------	--------	---------	-----------	----------	--------	----------

June 11	June 12	June 13	June 14
SCHEET	HAIRSTON	ARROYO	WESSEL
HAIRSTON	SANFORD	SEILER	SEILER
SANFORD	PIZZUTO	WESSEL	WILLS

June 15	Ju
SCHEET	
WESSEL	
SEILER	
June 22	Ju
SCHEET	
WILLS	
MACMASTER	
June 29	Ju
SCHEET	
ROEL	
SULLIVAN	
July 6	
SCHEET	
WILLS	
SULLIVAN	



photo by Rupert Morgan

photo by Rupert Morgan



photo by Alex Roel



photo by Art Arroyo

Clockwise from left

Chari Wessel graces the center work station on opening weekend. Isaac Wills gets down to work. Alex Roel, Isaac Wills, and Art Arroyo. Doug Ever's 6-foot BOUNTY safely arrived from Arizona.



photo by Art Arroyo

photo by Steve Scheet



photo by Alex Roel



photo by Steve Scheet

Clockwise from top

Jakob Nagatani displays some detailing skills; Art Arroyo checks in with Chuck Seiler shortly before Chuck gave the “bowl guys” a taste of their own medicine with his Dremel whining away at max RPMs; a happy family at one of our new rope stations with a Mini-STAR kit already secured; Jon Sanford hawks a Mini-STAR as Guild Master Steve Miller looks on.



All For Me Grog

Listen to it on
 YouTube

Well, it's all for me grog, me jolly, jolly grog

It's all for me beer and tobacco

Well, I've spent all me tin on the lassies drinking gin

Far across the western ocean I must wander

Where are me boots, me noggin', noggin' boots

They're all gone for beer and tobacco

For the heels they are worn out and the toes are kicked about

And the soles are looking out for better weather

CHORUS

Where is me shirt, me noggin', noggin' shirt

It's all gone for beer and tobacco

For the collar is all worn, and the sleeves they are all torn

And the tail is looking out for better weather

CHORUS

Well, I'm sick in the head and I haven't been to bed

Since first I came ashore with me plunder

I've seen centipedes and snakes and me head is full of aches

And I'll have to make a path for way out yonder

CHORUS x 2



Last Meeting



Our July Guild meeting was attended by 19 Members¹ and 2 guests²; all Officers were present. 1 new Member³ joined the Guild.

Powder Monkey Karl Zingheim rang the bell at exactly 6:00pm to signal the start of the meeting and the second dog watch.



photo by Chris Sullivan

The meeting opened with Guild Master Steve Miller welcoming Jeff and Andrew Warner who came across our booth at the recently concluded San Diego County Fair and made a point to visit the Guild. Andrew later signed on as our newest Member: welcome aboard Andrew!

Steve then announced two new Guild initiatives.

The first was revealing the “2025 Something Nautical-in-a-Bottle Challenge”, a Guild-wide competition for all Members to (perhaps) tackle their first ship-in-a-bottle model. To make everyone’s entry into this art form more approachable one of the mandatory rules was that all models must use a 13.7 ounce Starbucks Frappaccino bottle. This particular bottle has 1.5”



photo by Chris Sullivan

¹ Arroyo, Clausson, Florio, Gammudali, Hairston, Hite, Lonneckner, Miller, Nagatani, Roel, Sanford, Sellen, Scheet, Seiler, Sullivan, Tamayo, Walsh, Wills, Zingheim

² Buddhika Gammudali, Jeff Warner

³ Andrew Warner

diameter mouth. The only other rule is that the creation must be of a nautical nature. All entries must be delivered to the December meeting, at which judging will take place.

The second initiative was the introduction of a new meeting feature dubbed “Parley” by the Guild Master. [Read more about Parley](#) a bit further below.

Officers’ reports followed and yielded information about Member name tag replacements being easier to obtain due to the vendor now providing on-line ordering, news that the Guild’s on-line banking access has finally been sorted, and the availability of the Guild’s balance sheet to all Members in hard copy form until its’ anticipated debut in the Guild website’s Sea Locker in the near future.

Fair Chair Steve Scheet recapped another successful year for our Guild at the San Diego County Fair. This year’s booth included such improvements as raising the work surfaces for easier viewing by spectators, new chairs, and the addition of four knot-tying stations. Once again we enjoyed maximum Member coverage for each day of the fair and delivered hundreds of Mini-STAR kits to young modelers. The Guild thanks Steve, Tom Hairston, all of our volunteers that conned the booth, as well as those who entered models in the Design in Wood competition.

Finally, Expo Chair Karl Zingheim proposed a Member field trip to Joe Frangiosa’s [Nautical History Gallery & Museum](#) in Liberty Station in the coming months. Karl outlined some of the museum’s highlights and Mike Hite noted that plans are in the works for the museum to relocate across the property to the [USS RECRUIT](#) in the future. Karl indicated that he would coordinate the field trip and possibly lunch at a nearby restaurant; more information on date and time to be announced.



Roger



Parley

Business concluded, Guild Master Miller next introduced a new dedicated meeting section that he dubbed “Parley”² – a brief respite in which Members are free to raise any issue or question about model shipcrafting regardless of simplicity or complexity. Think “crowd-sourcing” and “safe space.”

² From the French “parlez” (you speak)

Parley

*"Parley. I invoke the right of parley.
If an adversary demands parley, you can do them no harm..."*

Elizabeth Swann Turner

The right of parley was invoked three times on its debut night, starting with our Guild Master:

- 1) *Rigging.* Steve Miller foreshadowed this month's [From The Quarterdeck](#) by raising his concerns about tackling rigging as a first-time modeler... specifically, the requirements surrounding serving line for the bowsprit and jib boom. Isaac Wills and Mike Lonnecker weighed in...
- 2) *Davits.* Art Arroyo described his quandary about adding davits to his ocean-going tug. Mike Florio and real-life bosun Chris Sullivan offered several suggestions on configurations and placement...
- 3) *Paddleboats.* New Member Andrew Warner described his interest in building an historical paddleboat from scratch and asked about what material he might use for the hull. Chuck Seiler and Karl Zingheim presented pro and con arguments for considering wood and styrene...

Following Parley, the Guild Master called for the refreshment break, which was immediately succeeded by [Show and Tell](#).

At 8:05pm the Powder Monkey rang the ship's bell bringing our July meeting to a close.



- *MISS WEBBITA by Steve Scheet*
- *Dumas kit, bashed, mahogany, teak*
- *1"=1' 1:12, completed*

Steve Scheet opened Show and Tell with a final victory lap for MISS WEBBITA, the Blue Ribbon winner at this year's San Diego County Fair.



Mike Lonnecker likewise brought in his Fair entry, his early 19th century English pinnace, now graced with a Red Ribbon.



- *PINNACE by Mike Lonnecker*
- *Passaro plans, boxwood, holly, maple, cherry*
- *1/4"=1' 1:48, completed*

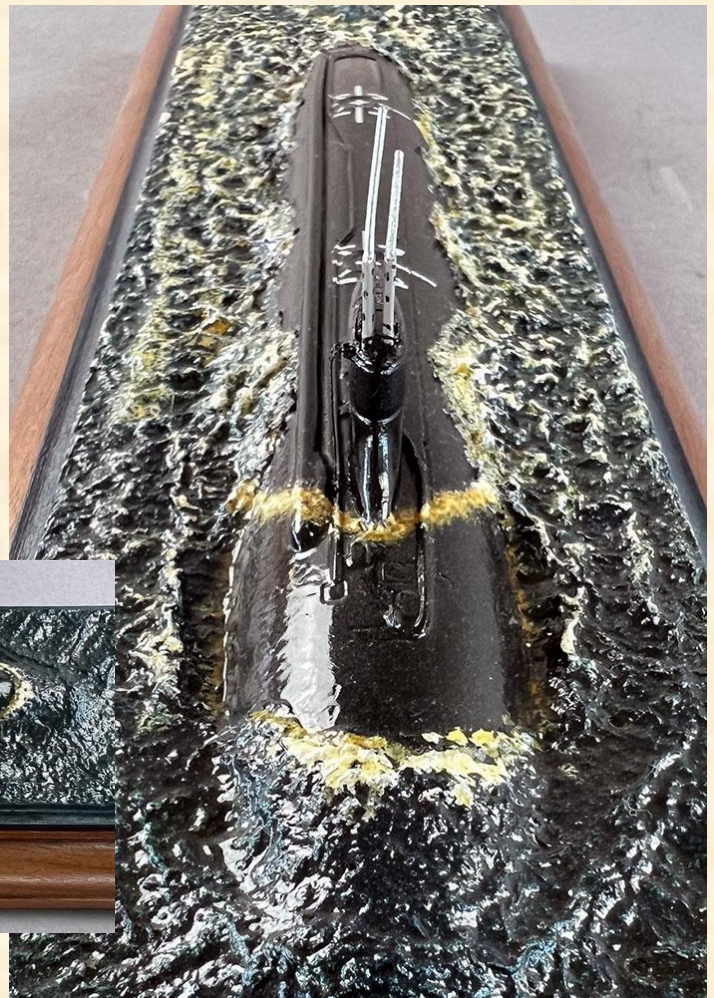


Chris Sullivan returned to Show and Tell with his LST now complete with full camouflage and weathering, and loose vehicles stored in the well deck.

- *LANDING SHIP (TANK)* by Chris Sullivan
- AFV Club kit, plastic, photo-etch brass
- 1/32"≈1' 1:350, completed

Mike Florio showed off another of his waterline models, this time the submarine SKIPJACK slipping under the ocean's surface.

- *SKIPJACK* by Mike Florio
- MicroMir kit, plastic
- 1/32"≈1' 1:350, completed



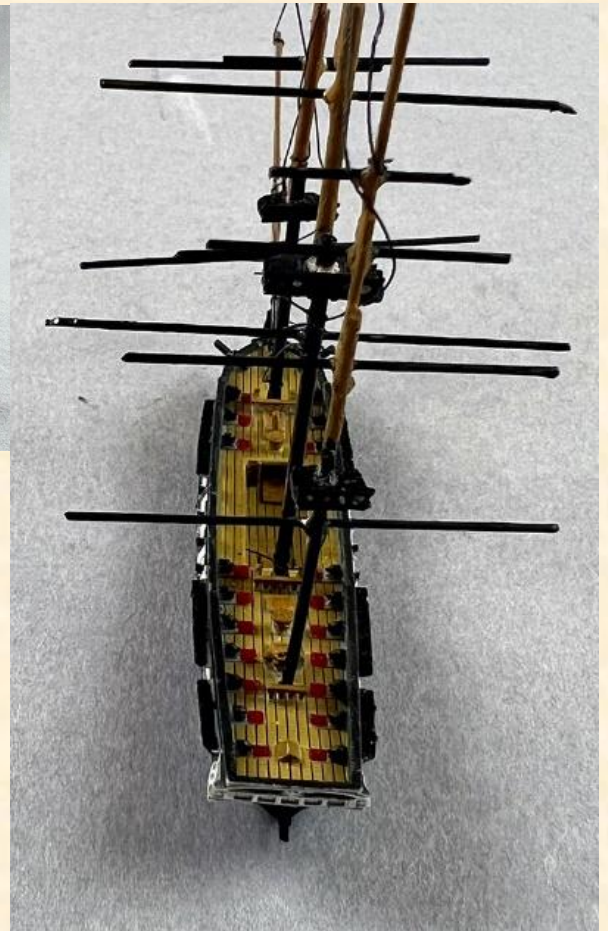
- *SANTA MARIA aka RUPERT MORGAN by Chuck Seiler*
- *Artesania Latina kit, beech, walnut, cedar, birch*
- *3/16"=1' 1:64, under construction*

Member **Chuck Seiler's** SANTA MARIA appeared sporting new hull planking applied during his volunteer time at the Guild's Fair booth this past month.



- *CONSTELLATION by Jakob Nagatani*
- *Turner Miniatures 3D printed file, plastic*
- *1/64"≈1' 1:700, under construction*

Jakob Nagatani began his standing rigging on CONSTELLATION, his 3D-printed Show and Tell offering. Jakob has been experimenting with very thin threads and even metal strips to see how they work at this small scale, and worked on this build at the Fair on his volunteer days.





Tom Hairston closed out Show and Tell by presenting his scratch build (and second version) of the Maritime Museum of San Diego's PILOT BOAT as she looks today. She took 4th place at this year's Fair.

- *PILOT BOAT by Tom Hairston*
- *scratch build, basswood, poplar*
- *1/4"≈1' 1:52, completed*



Flotsam and Jetsam

"Stainless steel isn't"

unknown sailor

Soundings – pronouncing nautical terms

The **COXSWAIN** in the days of sail was commonly the helmsman steering the Captain's gig or Admiral's barge... and possibly one of the most mangled nautical terms.

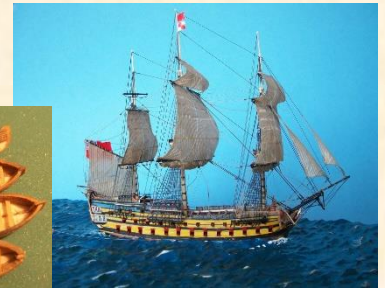


Reads like: **koks•swane** (one word, two syllables, accent on first)

Pronounced: **kok•zun** (one word, two syllables, accent on first)

Build Gallery ★ ★ ★

Members are invited to submit completed builds to Webmaster [John Walsh](#) for inclusion in our website's BUILD GALLERY. Provide the name of your vessel, circa depicted, scale, materials, and whether built from scratch, kit or bashed. Be sure to include a full view photo along with detailed supporting photos.



Around the Scuttlebutt – latest Guild news




Summer travel options to the Embarcadero (see our [map](#)):

- ☞ Arrive early (5pm) and enjoy the Guild's social hour aboard the BERKELEY and/or help set up before the meeting
- ☞ Embarcadero public parking lots (metered pay stations)
- ☞ North Harbor Drive street parking in front of the San Diego County Administration building (parking meters)
- ☞ MTS trolley (Blue or Green Line / County Center Station); 0.2 mile walk
- ☞ AMTRAK train (Santa Fe Depot); 0.3 mile walk
- ☞ USS MIDWAY public parking lot; 0.5 mile walk
- ☞ Tuna Harbor public parking lot; 0.6 mile walk
- ☞ Uber / Lyft / taxi
- ☞ Car pool



The Community Build has moved their meeting start time to 5pm; this now coincides with the regular Guild Meeting's social hour and set-up time, so stop by and see how the *Masting and Rigging* project is faring.



The Guild had three Members making their Fair debut by working the booth this year: Phil Pizzuto, Jakob Nagatani, and Doug Evers. Doug also lent his BOUNTY build for display in the booth and Phil entered his CONSTITUTION in the Design in Wood competition. 



A friendly new competition has been devised similar to our “2023 Creative Oar Challenge”. The “2025 Something Nautical-in-a-Bottle Challenge” is open to all Members; all entries are due and will be judged at the



December meeting. The only requirements are that it must use a 13.7 ounce Starbucks Frappuccino bottle and must be nautical in nature.

Optional corks and rubber “feet” for stability are available for free at meetings. *Think outside the bottle* and have fun!

On The Horizon



AUG 5	6pm	Officers Meeting	online
AUG 12	5pm	Community Build Meeting	BERKELEY
AUG 12	6pm	Guild Meeting 🚢 Birthday	BERKELEY w/cake
AUG 19	–	<i>The Second Dog Watch</i>	website, email
SEP 2	6pm	Officers Meeting	online
SEP 9	5pm	Community Build Meeting	BERKELEY
SEP 9	6pm	Guild Meeting 🚢 Anniversary	BERKELEY w/pot luck
SEP 16	–	<i>The Second Dog Watch</i>	website, email
OCT 7	6pm	Officers Meeting	online
OCT 14	5pm	Community Build Meeting	BERKELEY
OCT 14	6pm	Guild Meeting	BERKELEY
OCT 21	–	<i>The Second Dog Watch</i>	website, email



1) How did you come to call San Diego home?

I lived back East most of my early life, growing up near Detroit and working in Ohio, Virginia and Georgia. In 2019 my wife had a great job opportunity in the San Diego area so we both came to check it out and have been living here since.

2) Tell us a bit about your life/career path.

After earning my college degree in Mechanical Engineering I started working for General Motors doing both engineering and line supervision in the paint shop at Lordstown Assembly in Ohio where Chevy Cavaliers and Cobalts were being produced. I met my wife early in my career at General Motors and we have been married 19 years.



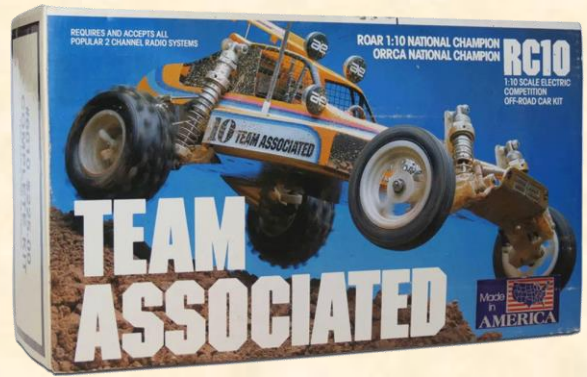
As my career progressed, I've had many mechanical design engineering roles over the years working for companies such as Mack Trucks on semi-truck drive axles, General Dynamics on amphibious vehicles, Caterpillar on generator sets, and most recently electro-mechanical equipment such as battery assemblies here in California.

3) How did you come to the Guild?

My wife and I visited the Maritime Museum of San Diego and I was impressed with the level of detail of the model ships aboard the BERKELEY. At the Museum Model Shop I found out there was a Guild building these types of models and I knew that I had to join.

4) Do you recall your first model?

I have always loved models but most of the ones I have made are remote control cars and boats. My first RC car model was a Team Associated RC10 back in the 1980's. My first *ship model* was the SAN SALVADOR that I purchased in the Museum's gift shop.

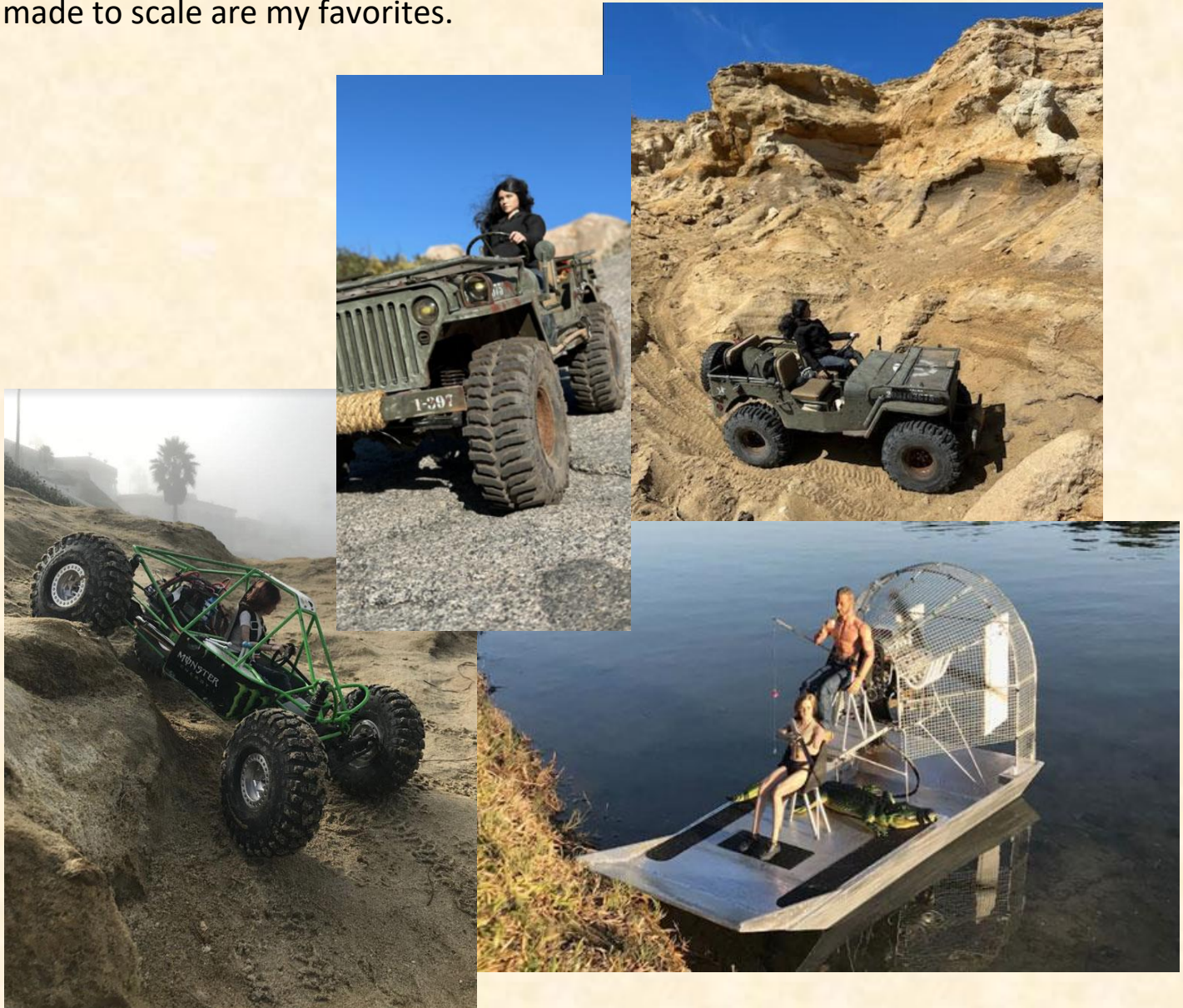


5) Of the models you've made, which is your favorite?

I have only made one ship model (and it's not even completed yet) so I'm forced to go with the SAN SALVADOR.

6) Describe another avocation you enjoy.

I enjoy any remote control car or boat. I have many in my collection, but those made to scale are my favorites.





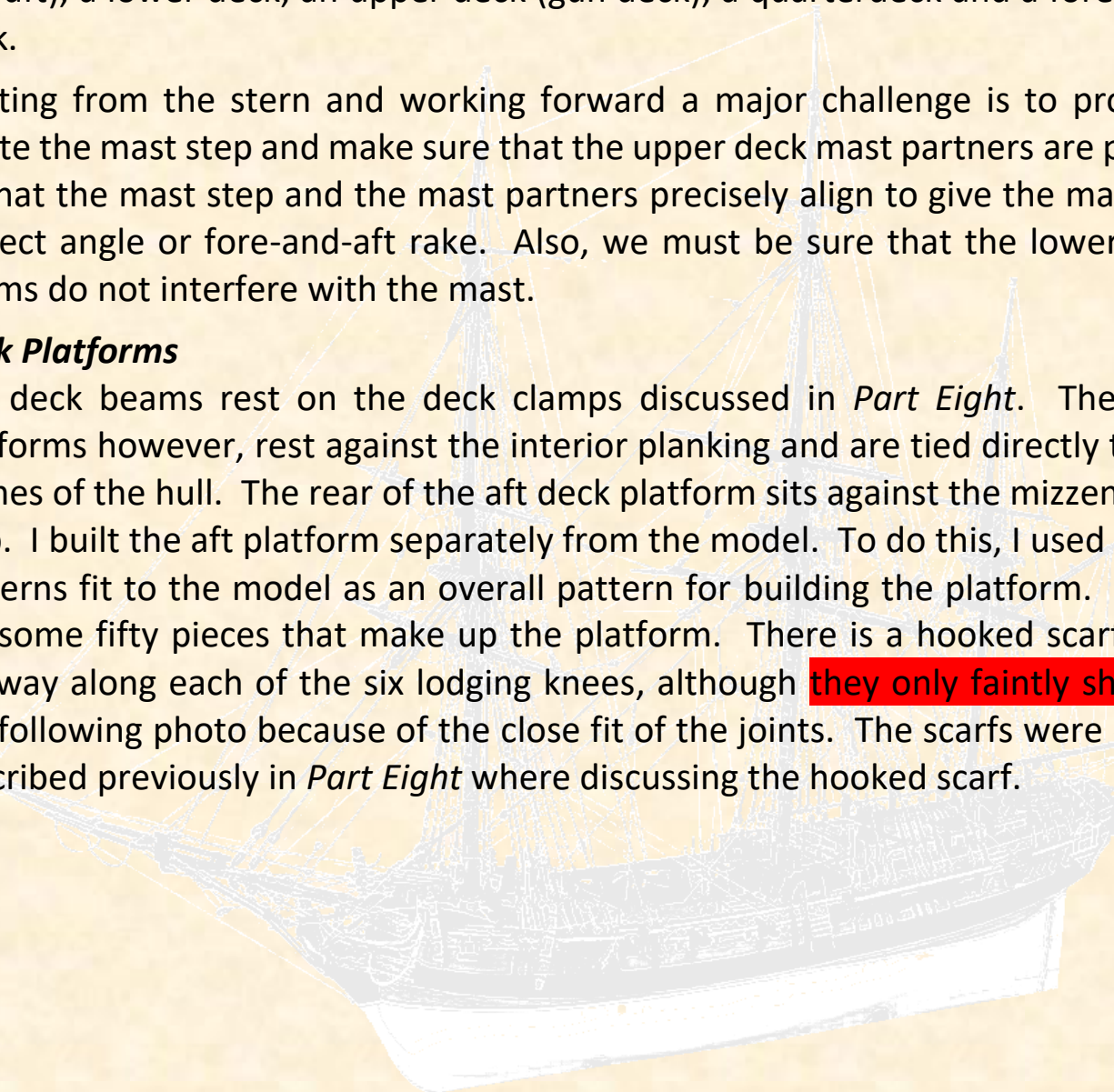
In [Part Eight](#) we saw some of the interior planking fabricated and installed.

Now we will look at some of the deck beams and how they interact with each other. SWAN-class ships had no orlop deck like the larger ships of the day had. Instead, they had (from the bottom up): two deck platforms (one forward and one aft), a lower deck, an upper deck (gun deck), a quarterdeck and a forecastle deck.

Starting from the stern and working forward a major challenge is to properly locate the mast step and make sure that the upper deck mast partners are placed so that the mast step and the mast partners precisely align to give the mast the correct angle or fore-and-aft rake. Also, we must be sure that the lower deck beams do not interfere with the mast.

Deck Platforms

The deck beams rest on the deck clamps discussed in *Part Eight*. The deck platforms however, rest against the interior planking and are tied directly to the frames of the hull. The rear of the aft deck platform sits against the mizzen mast step. I built the aft platform separately from the model. To do this, I used paper patterns fit to the model as an overall pattern for building the platform. There are some fifty pieces that make up the platform. There is a hooked scarf joint midway along each of the six lodging knees, although **they only faintly show** in the following photo because of the close fit of the joints. The scarfs were cut as described previously in *Part Eight* where discussing the hooked scarf.



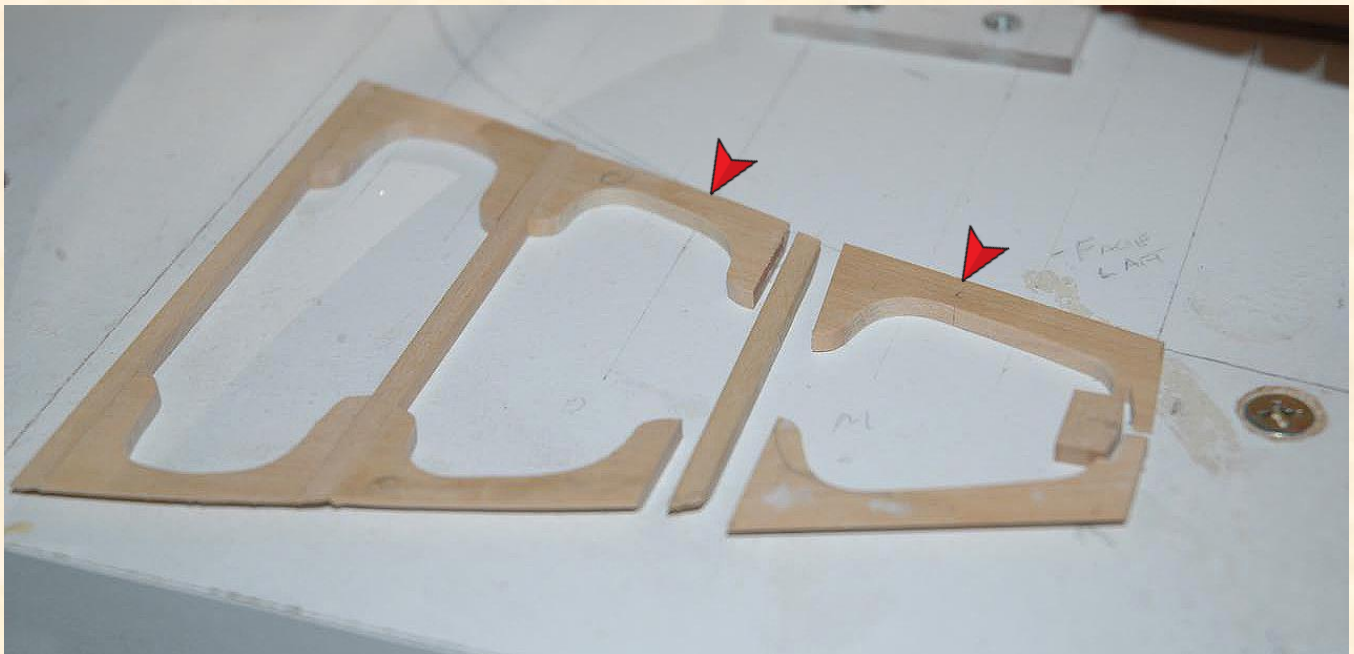


Figure 51 — aft deck platform under construction

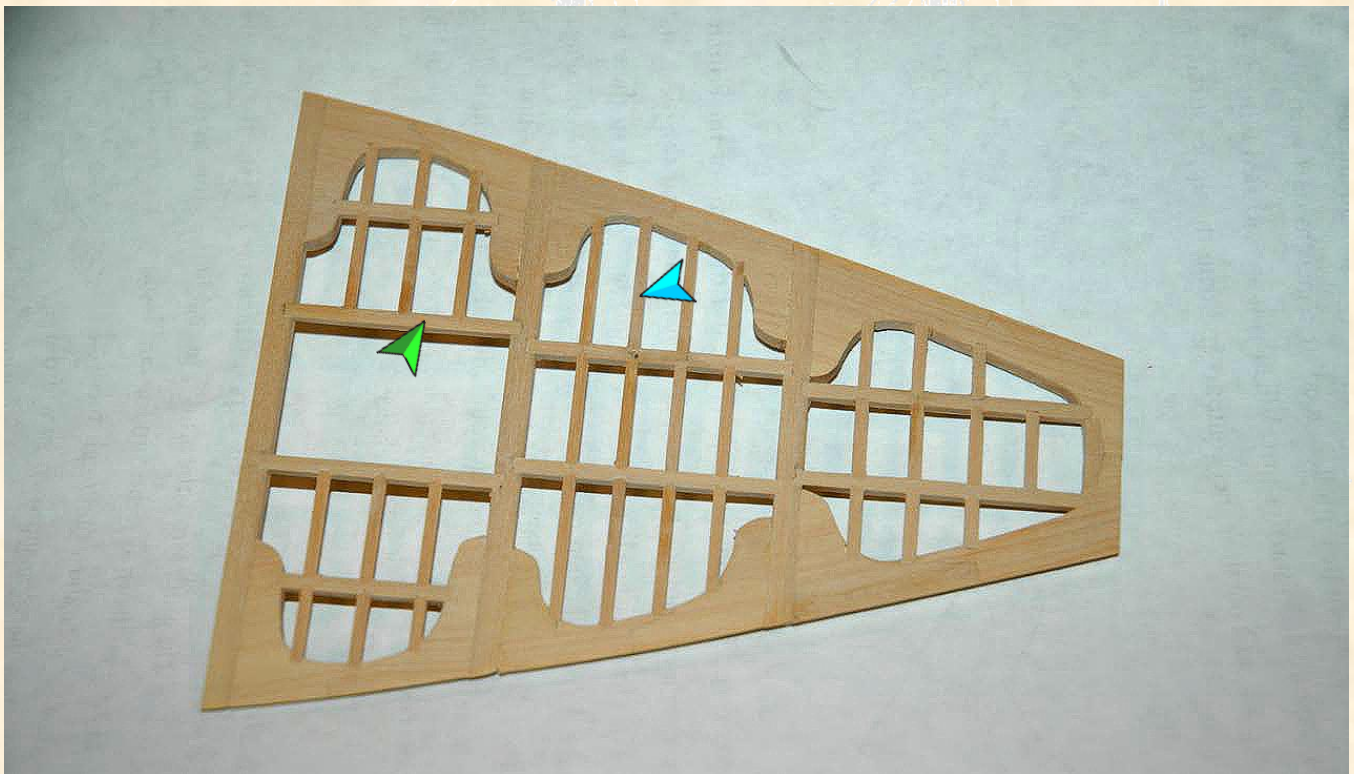
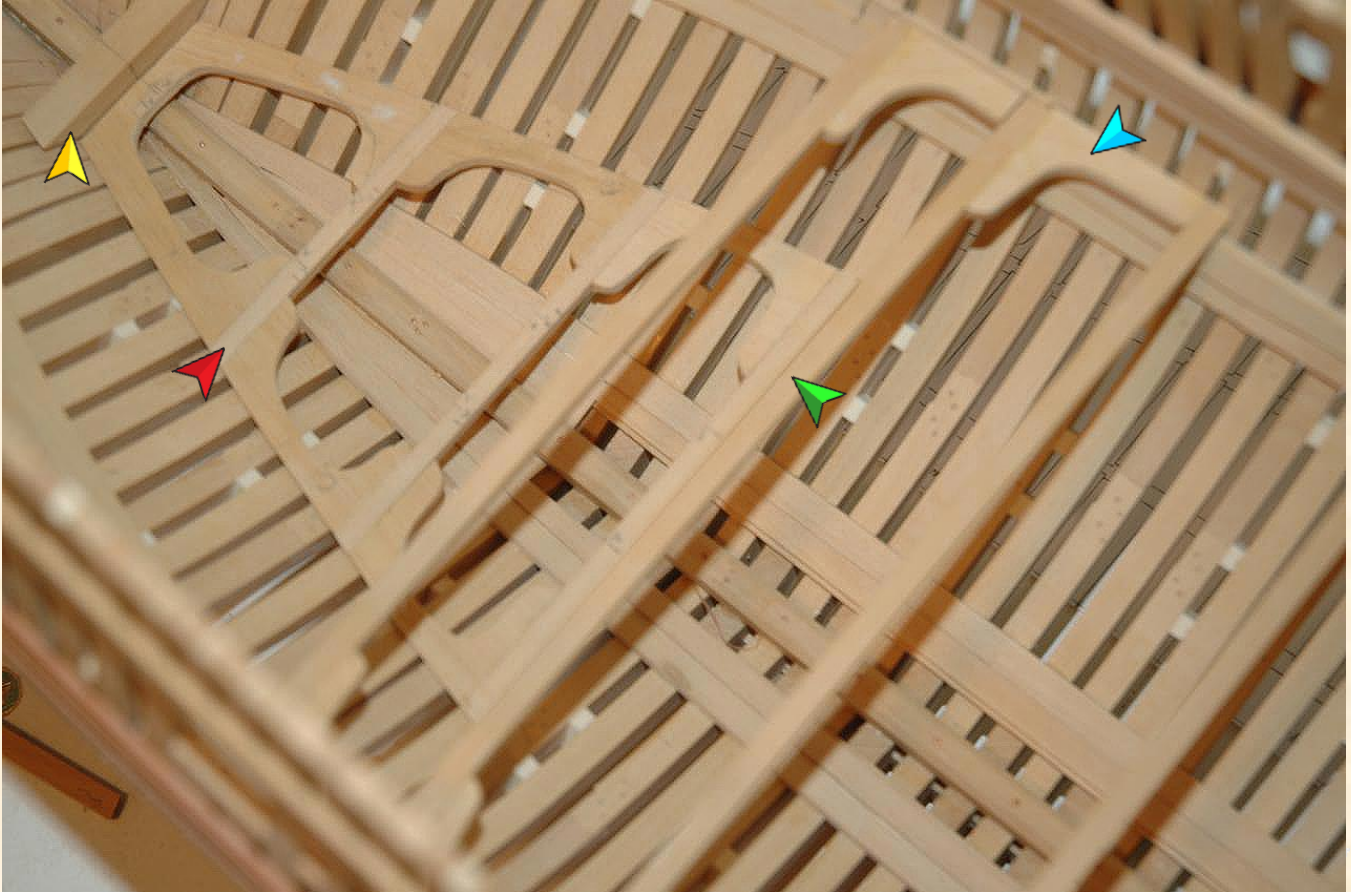


Figure 52 — aft deck platform complete with ledges and carlings

Fitting for the Mizzen Mast

A lot of parts needed to be made and temporarily assembled in order to check the proper fit of the mizzen mast. Upper deck beams and lodging knees, lower deck beams and lodging knees, mizzen mast step, mizzen mast and aft platform all were installed without glue to ensure that their relative positions did not interfere with each other.



***Figure 53 — mizzen mast step and the incomplete aft platform in place
mizzen mast step still needs some final shaping***

Positioning the Mizzen Mast

A gantry jig was built from scrap wood to hold the mizzen mast in place during this process. At this stage, I used a simple dowel of the correct diameter to represent the mizzen mast. A clip of wood was glued to the gantry jig with a slot at the proper angle for the mast (5 degrees aft.) The gantry jig was then clamped to the build board and the mast positioned inserted to its final position in the hull.



Figure 54 — gantry jig holding mizzen mast (dowel) in place



Figure 55 — gantry jig clip used to hold the dowel

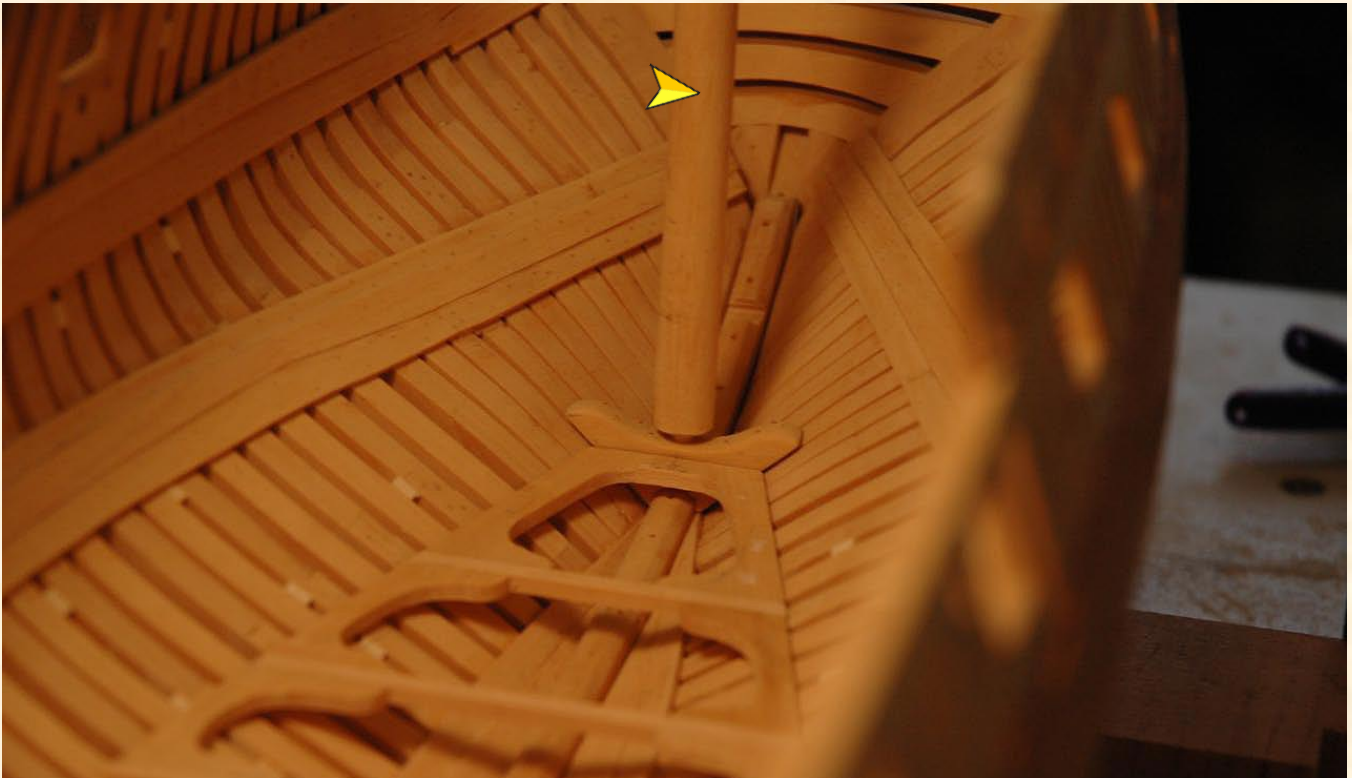


Figure 56 — **dowel** of the mast's diameter was used to check the fit with surrounding parts

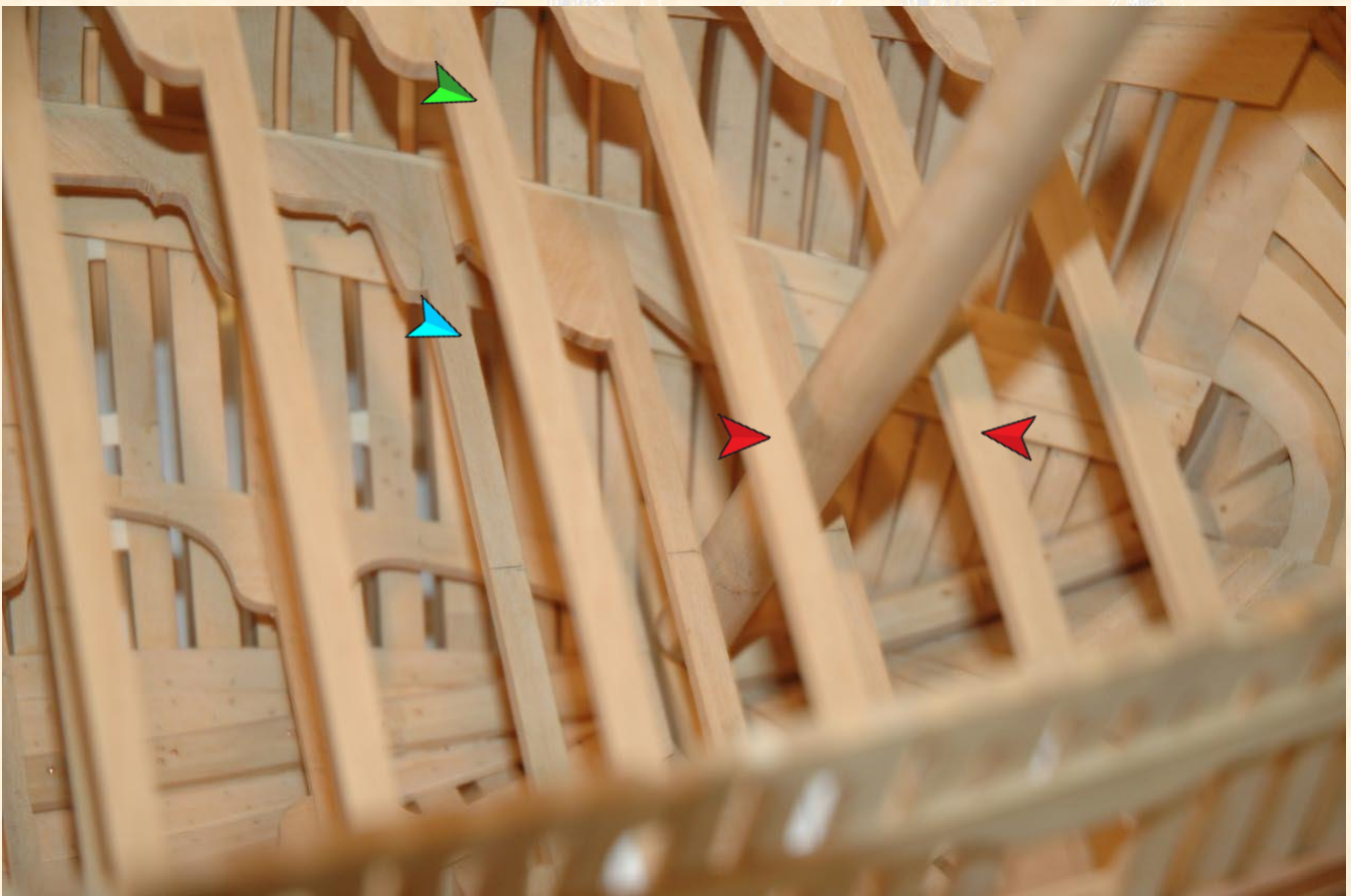


Figure 57 — **upper** and **lower** deck frames in place
dowel stands right between the **two upper deck beams** where the mast partners will be

Ledges

All the parts shown below were only installed temporarily. The ledges, however, were a problem to keep in place as I worked. I needed some way to temporarily glue them in place.

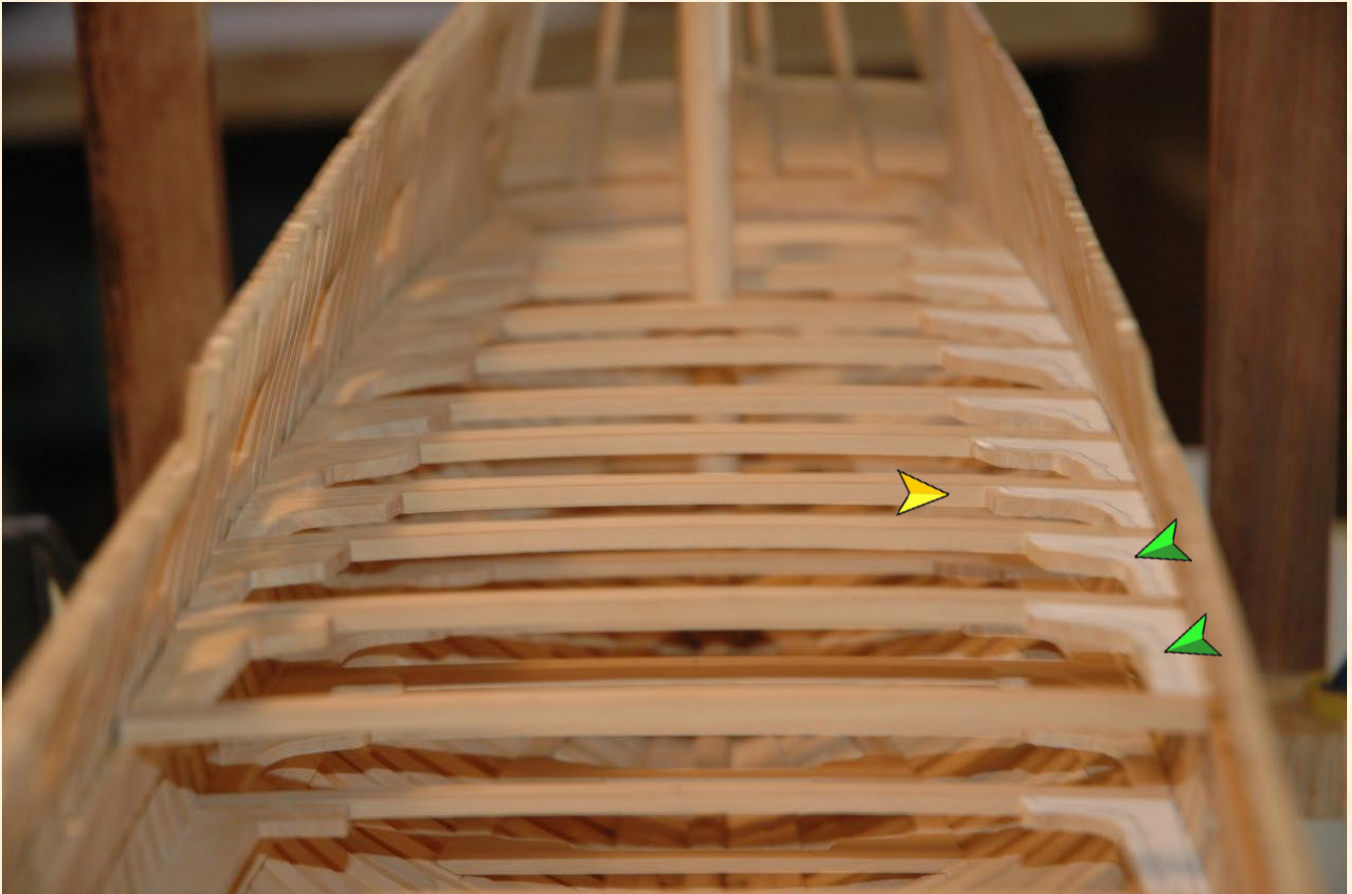


Figure 58 — note the paper patterns still on some of the ledges

I thought back to the fact that I used Elmer's Glue Stick to attach paper patterns to wooden parts earlier, and that paper is made of wood: so why not use it to attach wooden parts to each other? This worked fine. Later, a little pressure and the parts popped apart and a damp cloth removed any glue residue.

Tales of the FLY Comes to a Close

This is the final installment of *Tales of the FLY*. I have worked on this model for about three years and these articles have now caught up to the FLY's current state; I will be resuming construction soon.



This series of articles covered some of the challenges of scratch building a model ship. There are many difficulties in modeling a ship including selecting the ship itself and the level of detail desired for the finished model. A lot of the challenges are exactly the same whether it's a simple ship's boat or a three-masted ship-of-the-line.

When building a kit you receive a set of instructions. The instructions for some of the older kits are pretty poor, but they do give you some rudimentary instructions and tips for building the model. Newer kits have recently started to excel in providing step-by-step illustrated instructions and 3D views, templates, and alignment fixtures. Practicums can also be purchased for some kits. All of this eliminates a lot of the aforementioned challenges, *but scratch building provides none of this.*

To me the biggest challenge in scratch building is planning: each and every step is entirely up to you. Like a chess game, you must look as many moves ahead as you can. After planning those steps you must then figure out how to make the individual parts and determine the order in which to assemble them. However, it is very easy to get out of sequence, leave something out, and have to backtrack.

Thinking of all the questions that you need to ask yourself even before you start is difficult: have I selected the right model, do I have enough information, is it in my skill range, will it be plank-on-frame or plank-on-bulkhead or solid hull, how will the model be displayed, what materials, level of detail, and coloration should I use are just a few to be considered.

Let me leave you with a couple thoughts...

One of my rules to help in planning and keep from getting ahead of myself is "Never attach anything permanently until some other step forces me to."

And finally: plan, make sketches, and *plan some more.*



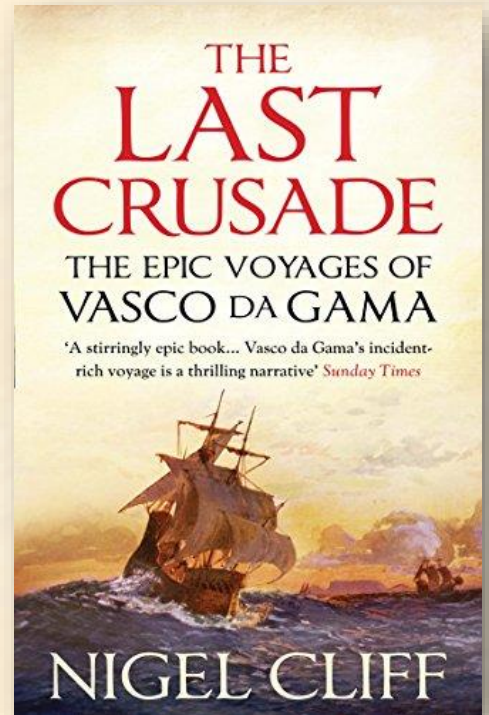
[The Last Crusade: The Epic Voyages of Vasco da Gama](#)
by Nigel Cliff | published 2012 | 560 pages

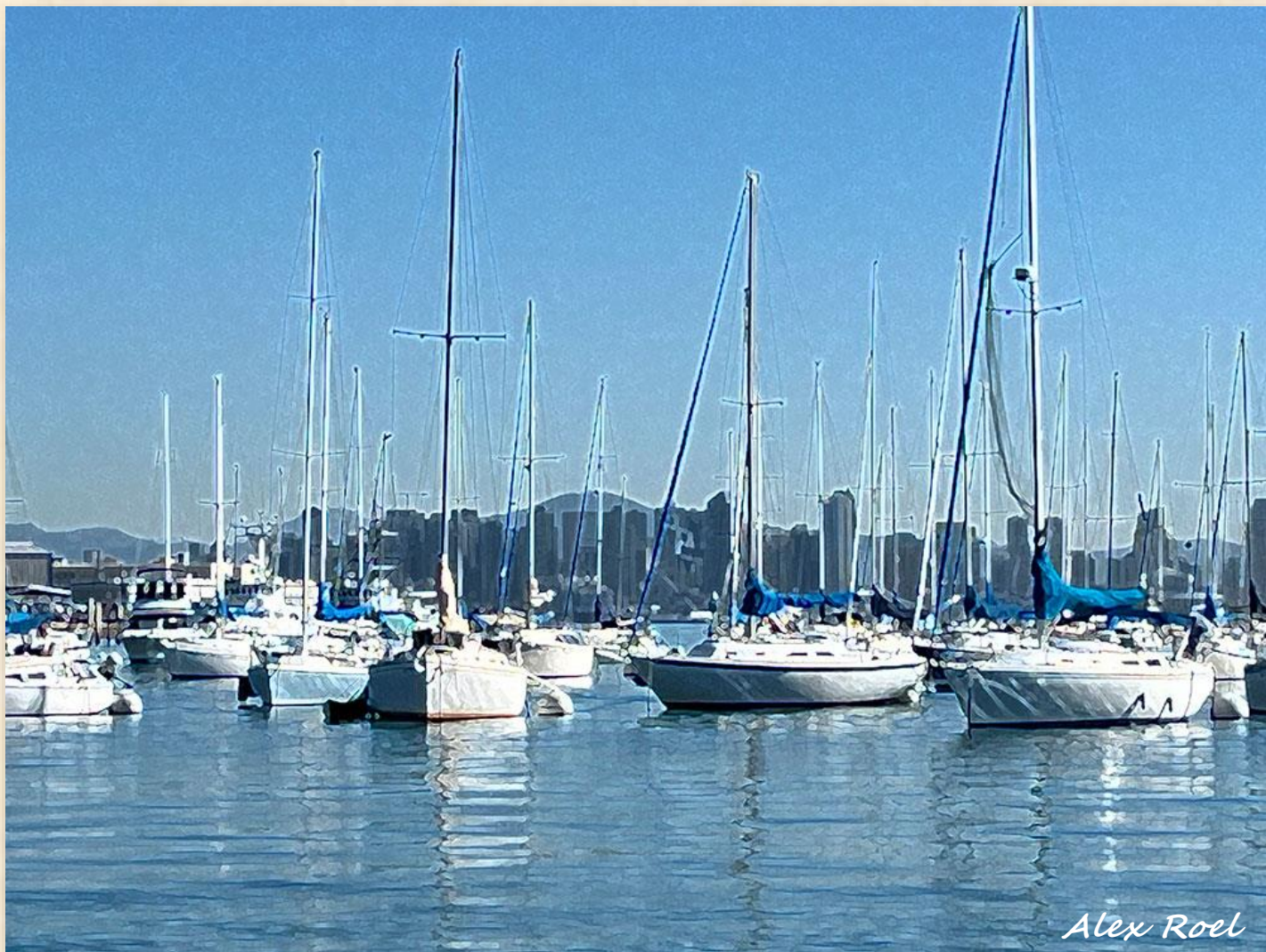
Long-time Guild Member and former Guild Master James Pitt recommends this historical fiction based upon newly-discovered diaries of da Gama's sailors from their voyages together.

From the Back Cover

"In 1498 a young captain named Vasco da Gama sailed from Portugal, circumnavigated Africa, crossed the Indian Ocean, and discovered the sea route to the Indies and, with it, access to the fabled wealth of the East. It was the longest voyage ever undertaken at that time. With blood-red Crusader crosses emblazoned on their sails, the explorers arrived in the heart of the Muslim East in an era when the old hostilities between Christianity and Islam had risen to a new level of intensity. In two voyages that spanned six years, da Gama would fight a running sea battle that would ultimately change the fate of three continents.

The Last Crusade is an epic tale of spies, intrigue, and treachery — of bravado, brinkmanship, and confused, often comical collisions between cultures — offering a surprising new interpretation of the broad sweep of history."





Alex Roel

San Diego Bay, January 6 2024, 11:02am

Thanks to our sponsor, the Maritime Museum of San Diego, the San Diego Ship Modelers Guild is fortunate to call not only San Diego Bay our home, but also the steam ferry BERKELEY, part of the Museum's fleet tied up on San Diego's Embarcadero.





Our Founders

The Guild was founded in 1971 by Bob Wright and Russ Merrill in collaboration with Ken Reynard, Captain of the barque STAR OF INDIA.

Mission Statement



The [San Diego Ship Modelers Guild](#) is dedicated to the preservation and enhancement of the craft of building scale ship models and to providing a forum for the exchange of ideas, information, skills, and techniques.

Maritime Museum of San Diego



The Guild encourages all Members to join and maintain an annual membership in the [Maritime Museum of San Diego](#). As our sponsor, the MMSD provides the Guild space aboard the steam ferry BERKELEY to hold monthly meetings; allows us to work in, store supplies, and maintain the Museum Model Shop; and annually awards Guild entrants ribbons and cash prizes for the Design In Wood competition at the San Diego County Fair.

Nautical Research Guild



The Guild also encourages all Members to join and maintain an annual membership in the [Nautical Research Guild](#). As a chartered Chapter Club, the NRG accords certain benefits, privileges, and protections to our Guild.

Piracy in Model Shipcrafting

Although there is no single, agreed-upon definition of what constitutes "piracy", the use of another's intellectual or physical property without recompense is the basis for any working definition. Unfortunately, this is an issue that affects our craft: be scrupulous and avoid purchasing pirated kits or materials.



Back Issues

Back issues of *The Second Dog Watch* are accessible via the [Newsletter Archive](#) which has digital copies dating back to Volume I, Issue 1 (May 1977.)